



STX2 & XTA 8/10 Series

Portable Grain Auger Assembly Manual

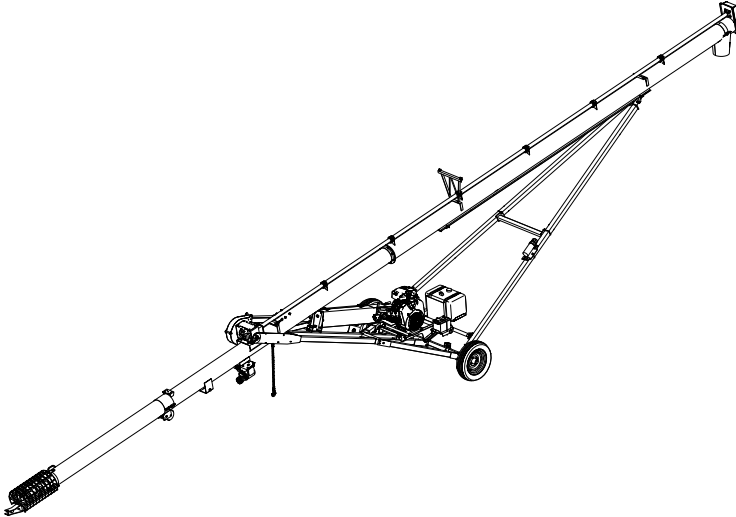
This manual applies to:

AGI Westfield STX2 8/10 (31/36/41/46/51)

AGI XTA 8/10 (31/36/41/46/51)

AGI Hutchinson STX2 8/10 (31/36/41/46/51)

AGI Mayrath STX2 8/10 (31/36/41/46/51)



LOOKING FOR PARTS?

Check out our online
Parts Catalog!



Read this manual before using product. Failure to follow instructions and safety precautions can result in serious injury, death, or property damage. Keep manual for future reference.

Part Number: 31032 R8

Revised: May 2025

Original Instructions

New in this Manual

The following changes have been made in this revision of the manual:

Description	Section
Updated the grease instructions.	Section 4.9 – Add Grease to the Head Cover on page 29

CONTENTS

1. Introduction	5
2. Safety.....	6
2.1 Safety Alert Symbol and Signal Words.....	6
2.2 General Safety Information.....	6
2.3 Rotating Flighting Safety	7
2.4 Rotating Parts Safety	7
2.5 Hand Winch Safety	7
2.6 Hydraulic Winch Safety	7
2.7 Drives and Lockout Safety	8
2.7.1 Gas Engine Safety	8
2.7.2 Electric Motor Safety.....	9
2.7.3 Hydraulic Power Safety	10
2.7.4 Tire Safety.....	11
2.7.5 Battery Safety	11
2.7.6 Personal Protective Equipment.....	12
2.7.7 Safety Equipment	12
2.8 Safety Decals	13
2.8.1 Decal Installation/Replacement.....	13
2.8.2 Safety Decal Locations and Details	13
3. Features.....	21
4. Assembly	22
4.1 Assembly Safety	22
4.2 Check the Shipment	22
4.3 Before You Begin	22
4.4 Brand and Model Decal Placement	23
4.5 Assemble the Tube & Flighting	24
4.6 Install the Track Stops	25
4.7 Assemble the Driveshaft	26
4.8 Install the Spout	28
4.9 Add Grease to the Head Cover	29
4.10 Install the Intake Cage.....	30
4.11 Install the Hitch	31
4.12 Install the Truss Tower and Cable (51' Model).....	31
4.13 Attach the Lower Frame to the Tube	33
4.14 Attach the Lower Frame to the Axle.....	35
4.15 Attach the Upper Frame to the Tube	36
4.16 Attach the Upper Frame to the Axle.....	36
4.17 Install the Gearbox	38
4.18 Install the Motor Mount	39
4.19 Install the Gas Drive	40
4.19.1 Install the Battery and Fuel Tank.....	40
4.19.2 Install the Guard Attach Plate.....	41
4.19.3 Install the Engine Pulley	42
4.19.4 Install the Motor	43
4.20 Install the Drive Components.....	44
4.20.1 Install the Gearbox Pulley	44

4.20.2 Install the Idler Assembly	45
4.20.3 Install the Guard Assembly	46
4.20.4 Install the Belt	47
4.20.5 Install the Engine Pulley Guard	48
4.20.6 Install the Gearbox Pulley Cover	50
4.20.7 Tension the Belt	51
4.21 Install the Lift Cable	52
4.22 Install the Manual Winch and Connect the Lift Cable	53
4.23 Install the Manual Holder	55
5. Specifications	56
6. AGI Limited Warranty	58

1. Introduction

Before assembling, please read this manual. Familiarize yourself with the process and the necessary precautions for efficient and safe assembly of this AGI Portable Grain Auger.

Everyone present at the assembly site is required to be familiar with all safety precautions.

Keep this manual available for frequent reference and review it with new personnel. Call your local distributor or dealer if you need assistance or additional information.

2. Safety

2.1. Safety Alert Symbol and Signal Words



This safety alert symbol indicates important safety messages in this manual. When you see this symbol, be alert to the possibility of injury or death, carefully read the message that follows, and inform others.

Signal Words: Note the use of the signal words **DANGER**, **WARNING**, **CAUTION**, and **NOTICE** with the safety messages. The appropriate signal word for each message has been selected using the definitions below as a guideline.



Indicates an imminently hazardous situation that, if not avoided, will result in serious injury or death.



Indicates a hazardous situation that, if not avoided, could result in serious injury or death.



Indicates a hazardous situation that, if not avoided, may result in minor or moderate injury.



Indicates a potentially hazardous situation that, if not avoided, may result in property damage.

2.2. General Safety Information

Read and understand all safety instructions, safety decals, and manuals and follow them when assembling the equipment.

- Only experienced personnel who are familiar with this type of assembly and installation should perform this work. Untrained assemblers/installers expose themselves and bystanders to possible serious injury or death.
- Do not modify the auger in any way or deviate from the instructions in this manual without written permission from the manufacturer. Unauthorized modification or methods may impair the function and/or safety. Any unauthorized modification will void the warranty.
- Follow a health and safety program for your worksite. Contact your local occupational health and safety organization for information.
- Contact your local representative or AGI if you need assistance or additional information.
- Always follow applicable local codes and regulations.



2.3. Rotating Flighting Safety

DANGER

- KEEP AWAY from rotating flighting.
- DO NOT remove or modify flighting guards, doors, or covers. Keep in good working order. Have replaced if damaged.
- DO NOT operate the auger without all guards, doors, and covers in place.
- NEVER touch the flighting. Use a stick or other tool to remove an obstruction or clean out.
- Shut off and lock out power to adjust, service, or clean.



2.4. Rotating Parts Safety

WARNING

- Keep body, hair, and clothing away from rotating shafts, pulleys, belts, chains, and sprockets.
- Do not operate with any guard removed or modified. Keep guards in good working order.
- Shut off and lock out power source before inspecting or servicing machine.



2.5. Hand Winch Safety

When Equipped:

WARNING

- Inspect lift cable before using. Replace if frayed or damaged. Make sure lift cable is seated and tracking properly and cable clamps are secure.
- Tighten brake lock by turning winch handle clockwise at least two clicks after lowering the auger.
- Lower the auger fully before towing, then rotate winch handle until cable has light tension.
- Do not lubricate winch brake discs.

2.6. Hydraulic Winch Safety

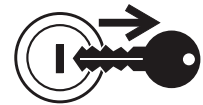
When Equipped:

⚠ WARNING

- Keep away from rotating cable drum and winch cable. Do not touch or grab cable while winch is being operated or use hands to guide the cable.
- Inspect cable and cable clamps before using hydraulic winch. Replace cable if frayed or damaged. Tighten cable clamps if necessary.
- Check the cable anchor on the winch drum is tight.
- Confirm hydraulic hoses are in good condition.
- Do not continue to supply power to hydraulic winch after the auger has reached full up position.
- Do not disconnect hydraulic quick couplers when lines are pressurized.
- Make sure lift cable is seated properly.
- Always keep a minimum of 3 cable wraps on the cable drum.

2.7. Drives and Lockout Safety

Inspect the power source(s) before using and know how to shut down in an emergency. Whenever you service or adjust your equipment, make sure you shut down the power source and unplug or remove the key (as applicable) to prevent inadvertent start-up and hazardous energy release. Know the procedure(s) that applies to your equipment from the following power source(s). Ensure that all personnel are clear before turning on power to equipment.



2.7.1 Gas Engine Safety

⚠ WARNING**Power Source**

- Keep guards in place and secure.
- Properly ventilate surrounding area.
- Never fill the fuel tank with the engine running, while smoking, or near an open flame. Always shut down and allow engine to cool before filling with fuel.
- Never overfill the tank or spill fuel. If fuel is spilled, clean it up immediately.
- Be sure to use the correct type and grade of fuel. Ground the fuel funnel or nozzle against the filler neck to prevent sparks that could ignite fuel vapors.
- Be sure to replace the fuel fill cap when you are done.

**Lockout**

- For engines with an electric start, remove the ignition key, the spark plug wire, or the spark plug.
- For engines with a rope or crank start, remove the spark plug wire or the spark plug.

2.7.2 Electric Motor Safety



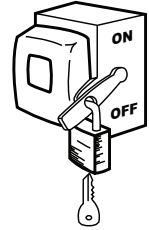
WARNING Power Source

- Electric motors and controls shall be installed and serviced by a qualified electrician and must meet all local codes and standards.
- Use a magnetic starter to protect the electric motor.
- You must have a manual reset button.
- Reset and motor starting controls must be located so that the operator has full view of the entire operation.
- Locate main power disconnect switch within reach from ground level to permit ready access in case of an emergency.
- Motor must be properly grounded.
- Ensure electrical wiring and cords remain in good condition; replace if necessary.

Lockout

- The main power disconnect switch should be in the locked position during shutdown or whenever maintenance is performed.
- If reset is required, disconnect all power before resetting motor.

SERVICE DISCONNECT



2.7.3 Hydraulic Power Safety

WARNING Power Source

- Refer to the rules and regulations applicable to the power source operating the hydraulic system.
- Do not connect or disconnect hydraulic lines while system is under pressure.
- Keep all hydraulic lines away from moving parts and pinch points.
- Escaping hydraulic fluid under pressure will cause serious injury if it penetrates the skin surface (serious infection or toxic reaction can develop). See a doctor immediately if injured.
- Use metal or wood as a backstop when searching for hydraulic leaks and wear proper hand and eye protection.
- Check all hydraulic components are tight and in good condition. Replace any worn, cut, abraded, flattened, or crimped hoses.
- Clean the connections before connecting to equipment.
- Do not attempt any makeshift repairs to the hydraulic fittings or hoses with tape, clamps, or adhesive. The hydraulic system operates under extremely high pressure; such repairs will fail suddenly and create a hazardous and unsafe condition.

Lockout

- Always place all hydraulic controls in neutral and relieve system pressure before disconnecting or working on hydraulic system.



2.7.4 Tire Safety

⚠ WARNING

Failure to follow proper procedures when mounting a tire on a wheel or rim can produce an explosion that may result in serious injury or death.

- DO NOT attempt to mount a tire unless you have the proper equipment and experience to do the job.
- Have a qualified tire dealer or repair service perform required tire maintenance.
- When replacing worn tires, make sure they meet the original tire specifications. Never undersize the replacement tire.
- DO NOT weld to the tire rim with the tire mounted on the rim. This action may cause an explosion which could result in serious injury or death.
- Inflate tires to the manufacturer's recommended pressure.
- Tires should not be operated at speeds higher than their rated speed.
- Keep wheel lug nuts tightened to manufacturer's recommendations.
- Never reinflate a tire that has been run flat or seriously under-inflated without removing the tire from the wheel. Have the tire and wheel closely inspected for damage before remounting.



2.7.5 Battery Safety

⚠ WARNING

- Wear safety glasses and protective gloves when working near batteries.
- Make certain the battery or terminal covers are in place and in good working order.
- Keep all sparks and flames away from batteries; gas given off by electrolyte is explosive.
- Avoid contact with battery electrolyte. Wash off any spilled electrolyte immediately.
- Do not tip batteries more than 45° to avoid electrolyte loss.
- To avoid injury from sparks or short circuits, disconnect battery ground cable before servicing any part of an electrical system.



2.7.6 Personal Protective Equipment

The following Personal Protective Equipment (PPE) should be worn when assembling the equipment.

Safety Glasses

- Wear safety glasses at all times to protect eyes from debris.



Coveralls

- Wear coveralls to protect skin.



Hard Hat

- Wear a hard hat to help protect your head.



Steel-Toe Boots

- Wear steel-toe boots to protect feet from falling debris.



Work Gloves

- Wear work gloves to protect your hands from sharp and rough edges.



2.7.7 Safety Equipment

The following safety equipment should be kept on site.

Fire Extinguisher

- Provide a fire extinguisher for use in case of an accident. Store in a highly visible and accessible place.



First-Aid Kit

- Have a properly-stocked first-aid kit available for use should the need arise, and know how to use it.



2.8. Safety Decals

- Keep safety decals clean and legible at all times.
- Replace safety decals that are missing or have become illegible. See decal location figures that follow.
- Replaced parts must display the same decal(s) as the original part.
- Replacement safety decals are available **free of charge** from your distributor, dealer, or factory as applicable.

2.8.1 Decal Installation/Replacement

1. Decal area must be clean and dry, with a temperature above 50°F (10°C).
2. Decide on the exact position before you remove the backing paper.
3. Align the decal over the specified area and carefully press the small portion with the exposed sticky backing in place.
4. Slowly peel back the remaining paper and carefully smooth the remaining portion of the decal in place.
5. Small air pockets can be pierced with a pin and smoothed out using the decal backing paper.

2.8.2 Safety Decal Locations and Details

Replicas of the safety decals that are attached to the auger and their messages are shown in the figure(s) that follow. Safe operation and use of the auger requires that you familiarize yourself with the various safety decals and the areas or particular functions that the decals apply to, as well as the safety precautions that must be taken to avoid serious injury, death, or damage.

Figure 1. Safety Decal Locations

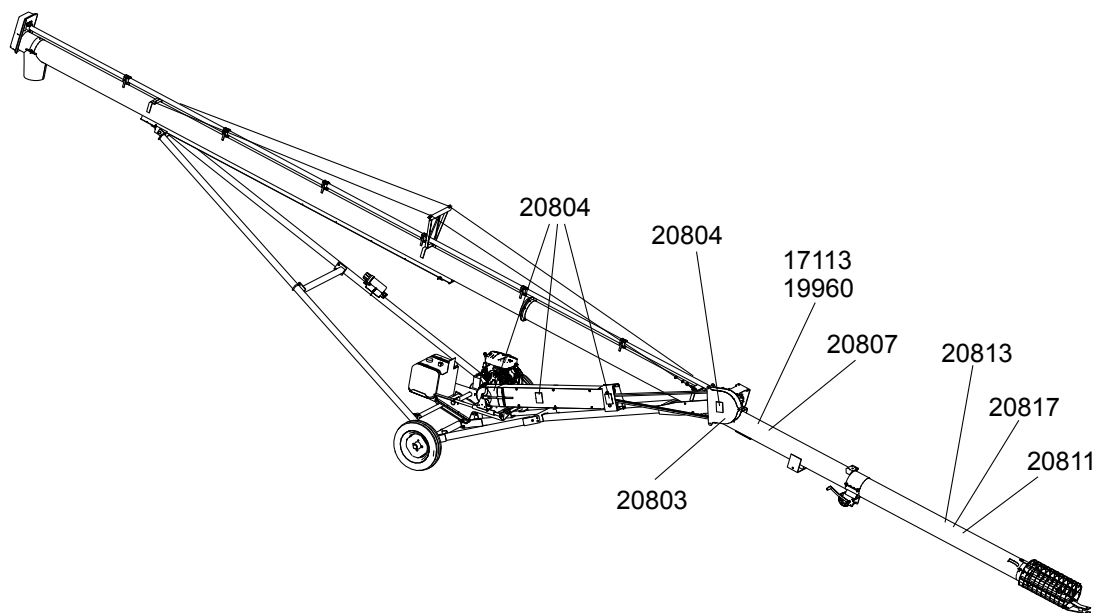


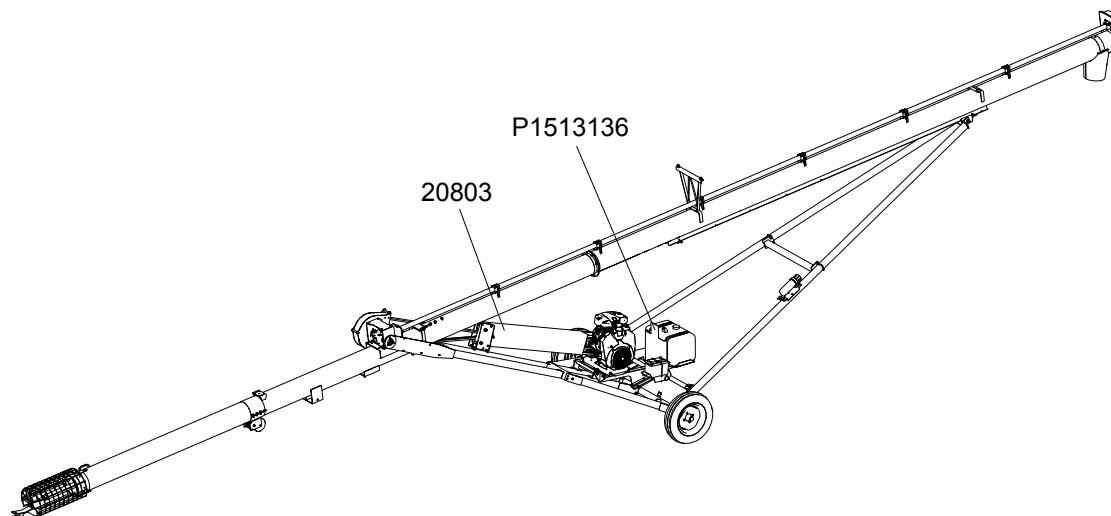
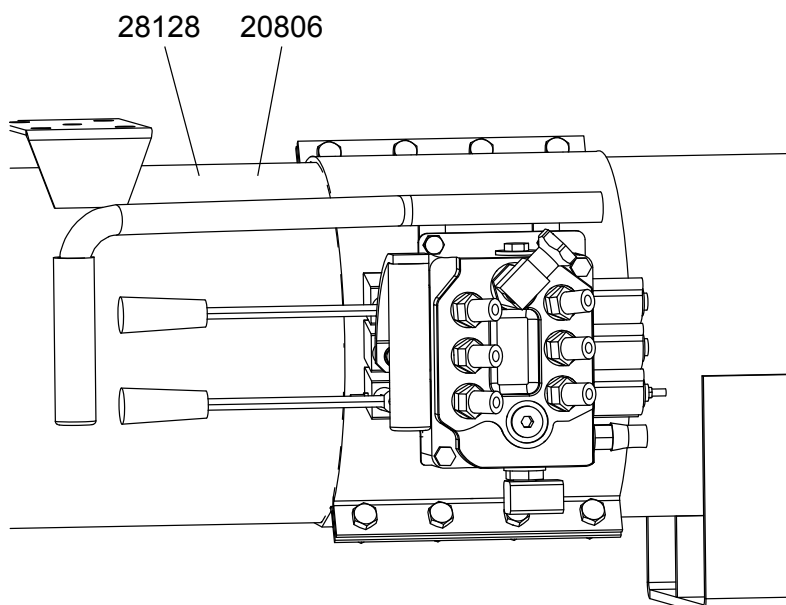
Figure 2. Safety Decal Locations**Figure 3. Regular SP Kit Safety Decal Locations (Option Kit)**

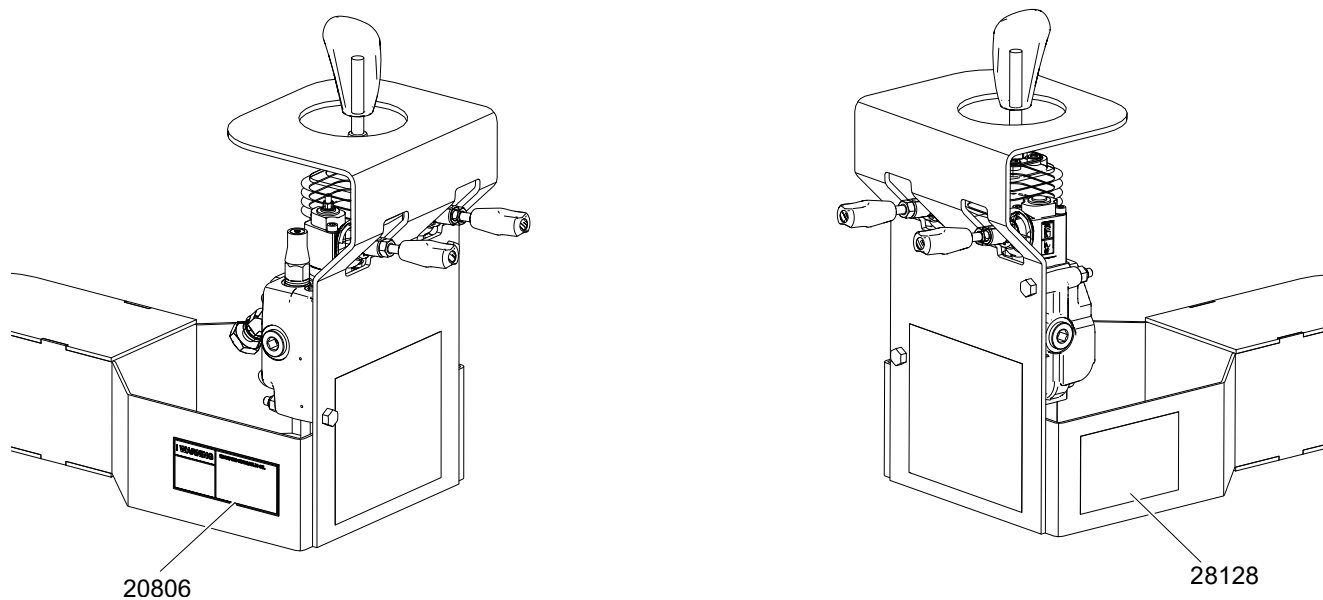
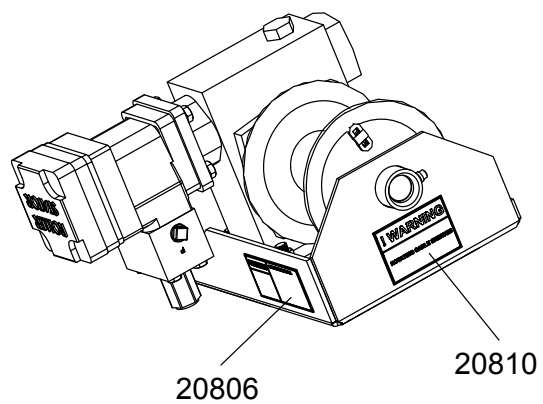
Figure 4. Hydraulic Steering Safety Decal Locations (Option Kit)**Figure 5. Hydraulic Winch Safety Decal Locations (Option Kit)**

Table 1. Safety Decals


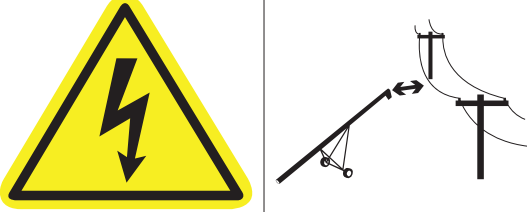


Part Number	Description
20817	<div data-bbox="415 275 963 913"> <div data-bbox="415 275 963 342">  DANGER </div> <div data-bbox="415 352 963 583">  </div> <div data-bbox="415 594 963 913"> <p>ELECTROCUTION HAZARD</p> <p>To prevent death or serious injury:</p> <ul style="list-style-type: none"> • When operating or moving, keep equipment away from overhead power lines and devices. • Fully lower equipment before moving. <p>This equipment is not insulated.</p> <p>Electrocution can occur without direct contact.</p> </div> </div>
20813	<div data-bbox="415 957 963 1749"> <div data-bbox="415 957 963 1024">  DANGER </div> <div data-bbox="415 1035 963 1266">  </div> <div data-bbox="415 1276 963 1749"> <p>ROTATING FLIGHTING HAZARD</p> <p>To prevent death or serious injury:</p> <ul style="list-style-type: none"> • KEEP AWAY from rotating auger flighting. • DO NOT remove or modify auger flighting guards, doors, or covers. Keep in good working order. Have replaced if damaged. • DO NOT operate the auger without all guards, doors, and covers in place. • NEVER touch the auger flighting. Use a stick or other tool to remove an obstruction or clean out. • Shut off and lock out power to adjust, service, or clean. </div> </div>

Table 1 Safety Decals (continued)



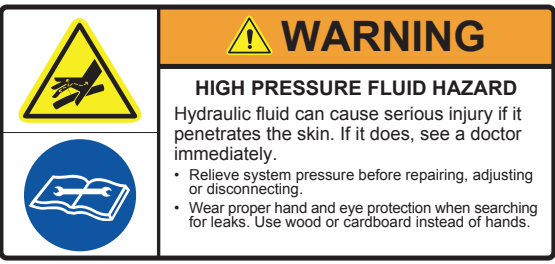
Part Number	Description
20803 (inside)	<div>  </div>
20804	<div>  </div>
20806 (Optional Mover Kit)	<div>  </div>

Table 1 Safety Decals (continued)

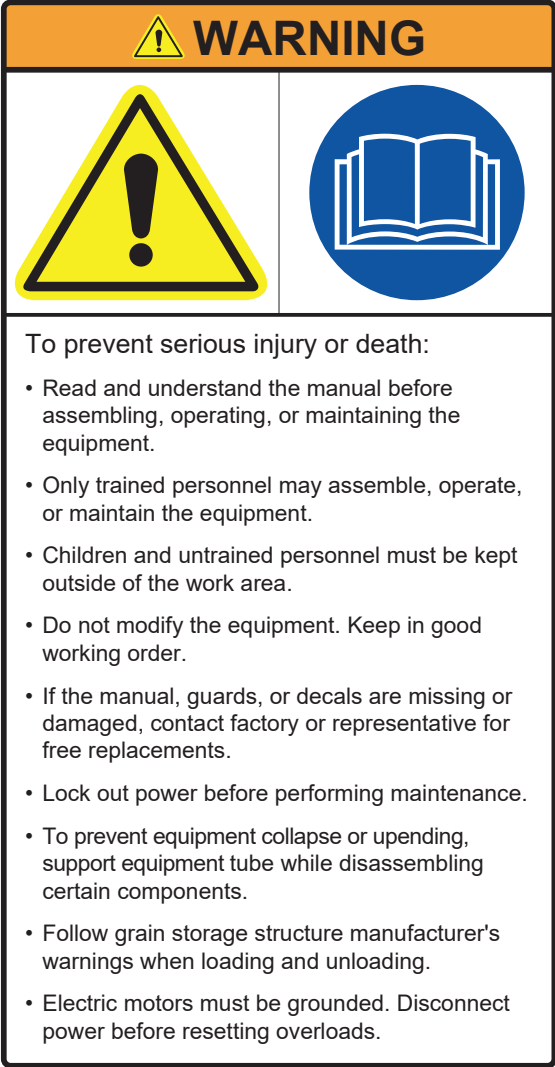
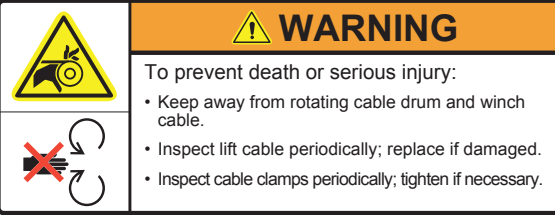
Part Number	Description
20807	<div data-bbox="412 273 964 1333">  <p>WARNING</p> <p>To prevent serious injury or death:</p> <ul style="list-style-type: none"> • Read and understand the manual before assembling, operating, or maintaining the equipment. • Only trained personnel may assemble, operate, or maintain the equipment. • Children and untrained personnel must be kept outside of the work area. • Do not modify the equipment. Keep in good working order. • If the manual, guards, or decals are missing or damaged, contact factory or representative for free replacements. • Lock out power before performing maintenance. • To prevent equipment collapse or upending, support equipment tube while disassembling certain components. • Follow grain storage structure manufacturer's warnings when loading and unloading. • Electric motors must be grounded. Disconnect power before resetting overloads. </div>
20810 (Optional Mover Kit)	<div data-bbox="412 1379 964 1591">  <p>WARNING</p> <p>To prevent death or serious injury:</p> <ul style="list-style-type: none"> • Keep away from rotating cable drum and winch cable. • Inspect lift cable periodically; replace if damaged. • Inspect cable clamps periodically; tighten if necessary. </div>

Table 1 Safety Decals (continued)





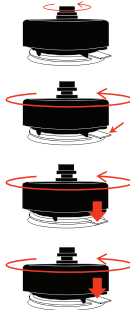
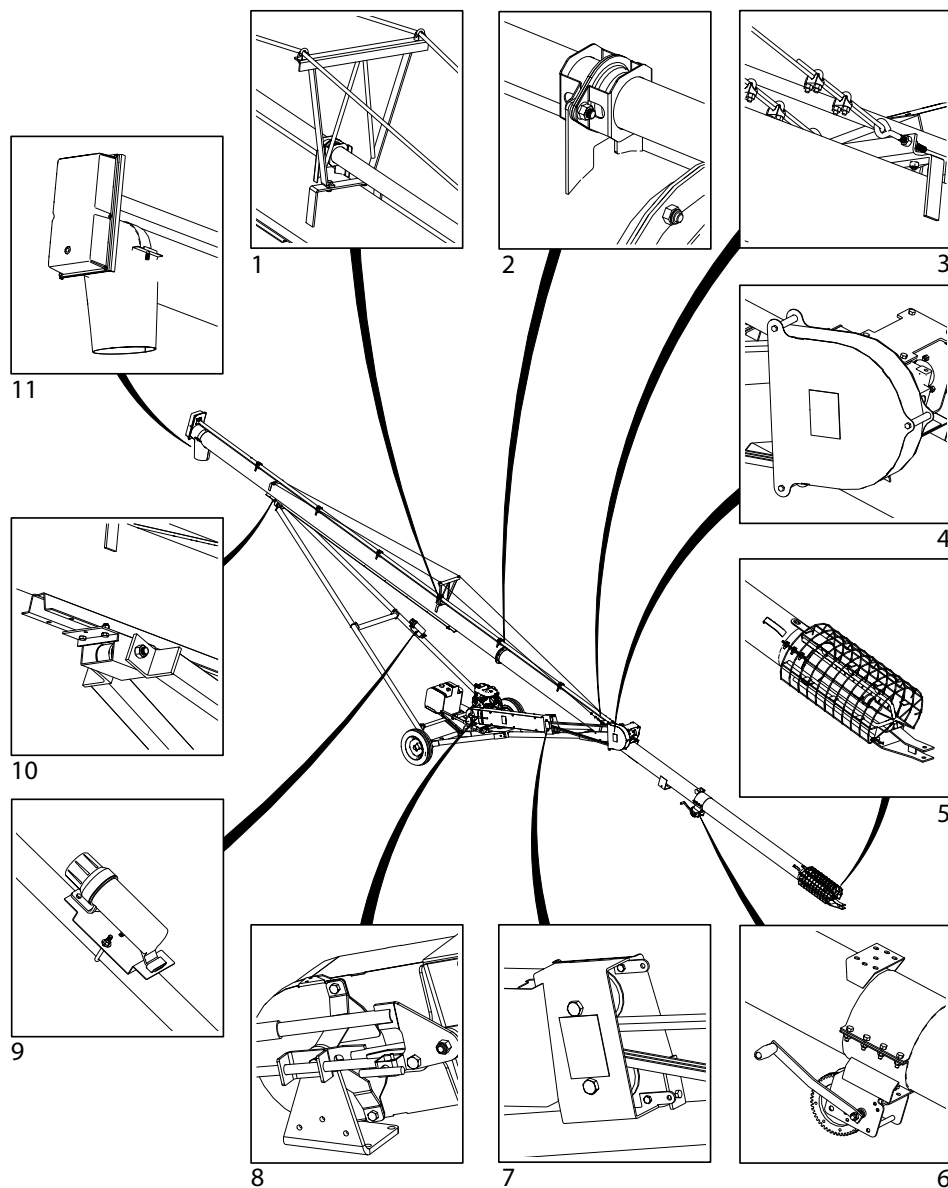
Part Number	Description
20811	<div data-bbox="415 275 964 957">  <p>WARNING</p> <p>UPENDING HAZARD</p> <p>To prevent death or serious injury:</p> <ul style="list-style-type: none"> • Anchor intake end and/or support discharge end to prevent upending. • Intake end must always have downward weight. Do not release until attached to tow bar or resting on ground. • Do not raise intake end above tow bar height. • Empty tube and fully lower before moving. </div>
17113	<div data-bbox="415 1010 964 1287">  <p>WARNING</p> <p>TRANSPORT HAZARD</p> <p>To prevent serious injury or death:</p> <ul style="list-style-type: none"> • Securely attach equipment to vehicle with correct pin and safety chains. • Use a tow vehicle to move equipment. </div>
28128 (Optional Mover Kit)	<div data-bbox="415 1346 964 1497">  <p>WARNING</p> <p>TRANSPORT HAZARD</p> <p>To prevent serious injury or equipment damage, before towing:</p> <ul style="list-style-type: none"> • Lift up wheel frame completely and secure with safety chain. • Pull handle to disengage drive wheel motors. </div>

Table 1 Safety Decals (continued)

Part Number	Description
P1513136	<div data-bbox="412 268 964 856"> <div data-bbox="412 268 964 317">  WARNING </div> <div data-bbox="467 331 909 357">CONTENTS MAY BE UNDER PRESSURE</div> <div data-bbox="425 371 938 441"> <p>As part of the fuel vapour retention system, it is normal for your tank to expand from internal pressure. Use the vent screw to relieve pressure and before refueling.</p> </div> <div data-bbox="425 455 565 478"> <p>To remove cap:</p> </div> <div data-bbox="425 487 779 726"> <ol style="list-style-type: none"> 1. Open VENT SCREW on top of cap FULLY. 2. Locate Pressure Relief Tab under cap. Turn cap until Pressure Relief Tab Lock engages. 3. Press down on tab, rotate cap 1/4 turn (to relieve pressure before opening tank) and release tab. STOP. Lock may engage again. 4. PRESS Pressure Relief Tab down again and turn slowly to remove cap. </div> <div data-bbox="812 449 941 756">  </div> <div data-bbox="425 745 558 768"> <p>To tighten cap:</p> </div> <div data-bbox="425 779 818 800"> <ul style="list-style-type: none"> • Turn Closure caps until an audible "click" is heard. </div> <div data-bbox="425 812 800 833"> <p>Failure to follow may result in fuel spillage.</p> </div> </div>
19960	<div data-bbox="412 905 964 1230"> <div data-bbox="412 905 964 982"> NOTICE </div> <div data-bbox="436 1003 932 1104"> <p>To prevent damage, wheels must be free to move when raising or lowering equipment.</p> </div> <div data-bbox="436 1125 932 1192"> <p>When equipment is positioned, chock all wheels.</p> </div> </div>

3. Features



1	cable bridge (51 model only)	7	belt idler (not required for 31 model)
2	shaft guarding	8	belt tension adjustment
3	cable adjustment (51 model only)	9	manual holder
4	pulley guarding	10	track
5	intake and intake guarding	11	discharge and upper chain drive
6	winch		

4. Assembly

4.1. Assembly Safety

WARNING

- Do not take chances with safety. The components can be large, heavy, and hard to handle. Always use the proper tools, rated lifting equipment, and lifting points for the job.
- Do not stand on, under, or near any component that is not secured.
- Carry out assembly in a large open area with a level surface.
- Always have two or more people assembling the auger.
- Make sure you have sufficient lighting for the work area.
- Tighten all fasteners according to their specifications. Do not replace or substitute bolts, nuts, or other hardware that is of lesser quality than the hardware supplied by the manufacturer.

4.2. Check the Shipment

Unload the auger parts at the assembly site and compare the packing slip to the shipment contents. Ensure that all items have arrived and that none are damaged. Take pictures of shipments prior to, or just after, unloading if there are any damages.

Report missing or damaged parts immediately to ensure that proper credit is received from AGI or your representative, and to ensure that any missing parts can be shipped quickly to avoid holding up the assembly process.

Important

Do not assemble or install damaged components.

4.3. Before You Begin

Before you assemble the auger:

- Familiarize yourself with all the sub-assemblies, components, and hardware that make up the equipment.
- Have all parts and components on hand, and arrange them for easy access.
- Separate the hardware (bolts, nuts, etc.) and lay them out into groups for easier identification during assembly.
- If assembling inside, confirm the ceiling and door width/height provide enough clearance when installing the undercarriage and to remove the auger from the building.
- Ensure there is adequate space to remove the assembled auger from the assembly area.

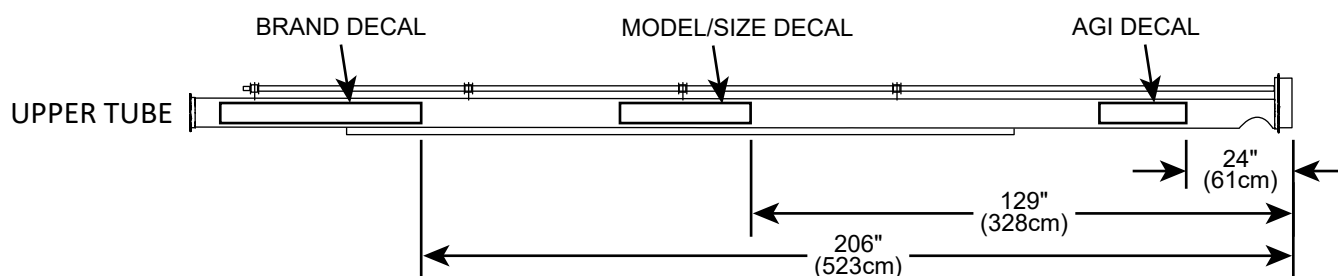
4.4. Brand and Model Decal Placement

Important

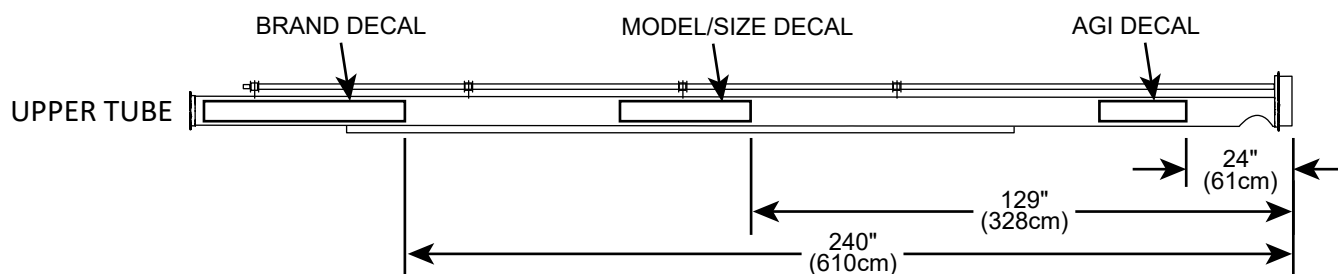
Do not cover any existing safety or instruction decals with the model decals.

1. Apply decals to both sides of auger tube.
2. Center decals vertically and apply to auger tube.

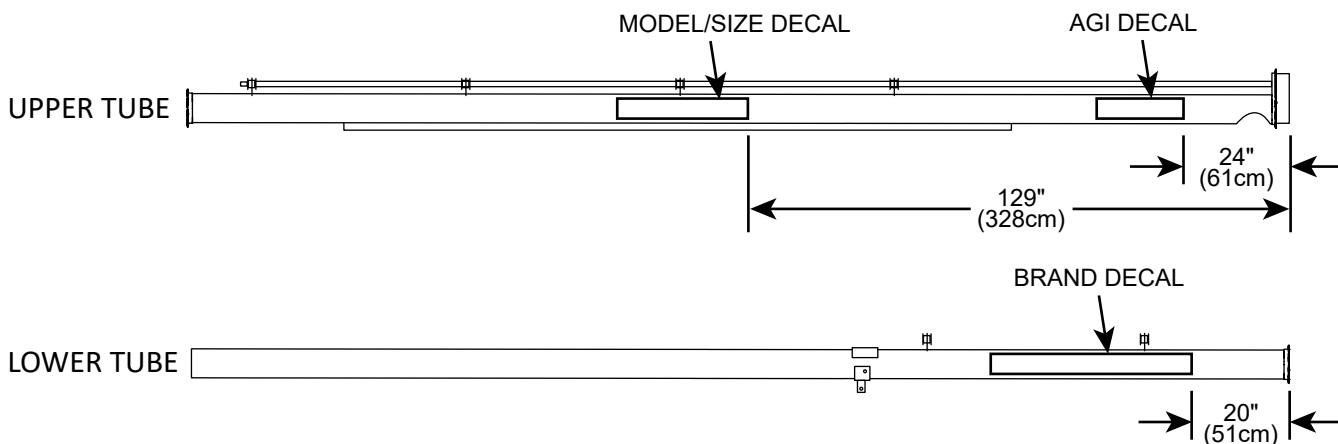
31' Model



36'/41' Models



46'/51' Models

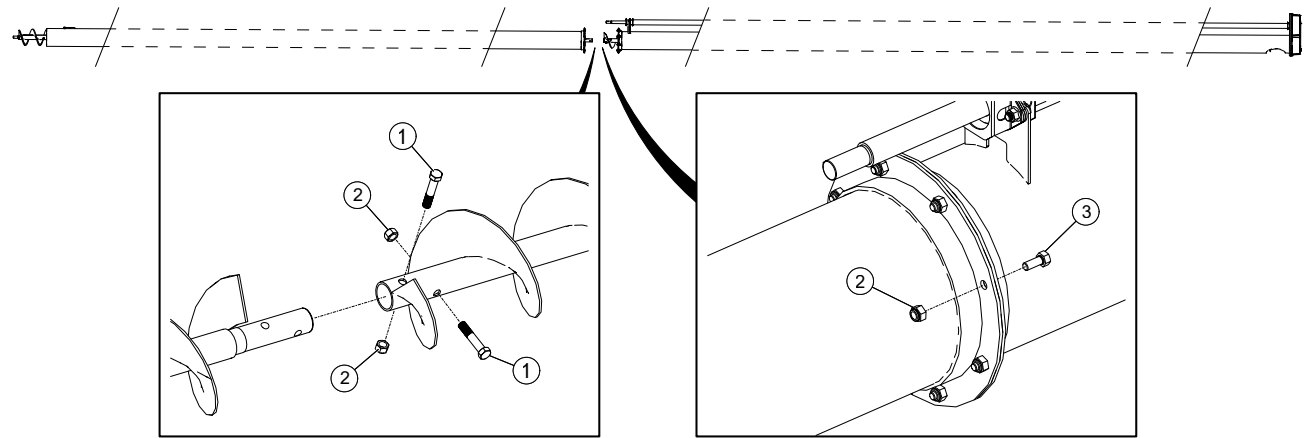


Note

For XTA models, the larger AGI decal is placed at the spout, on the upper tube.

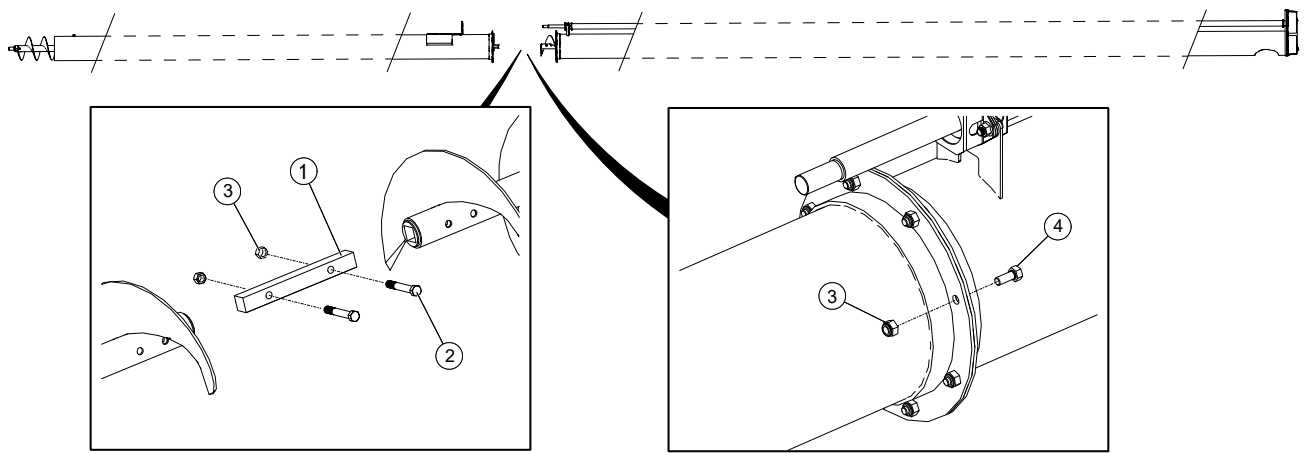
4.5. Assemble the Tube & Flighting

8" Models



1	bolt, 7/16" x 2-1/4"	3	bolt, 7/16" x 1"
2	lock nut, 7/16"		

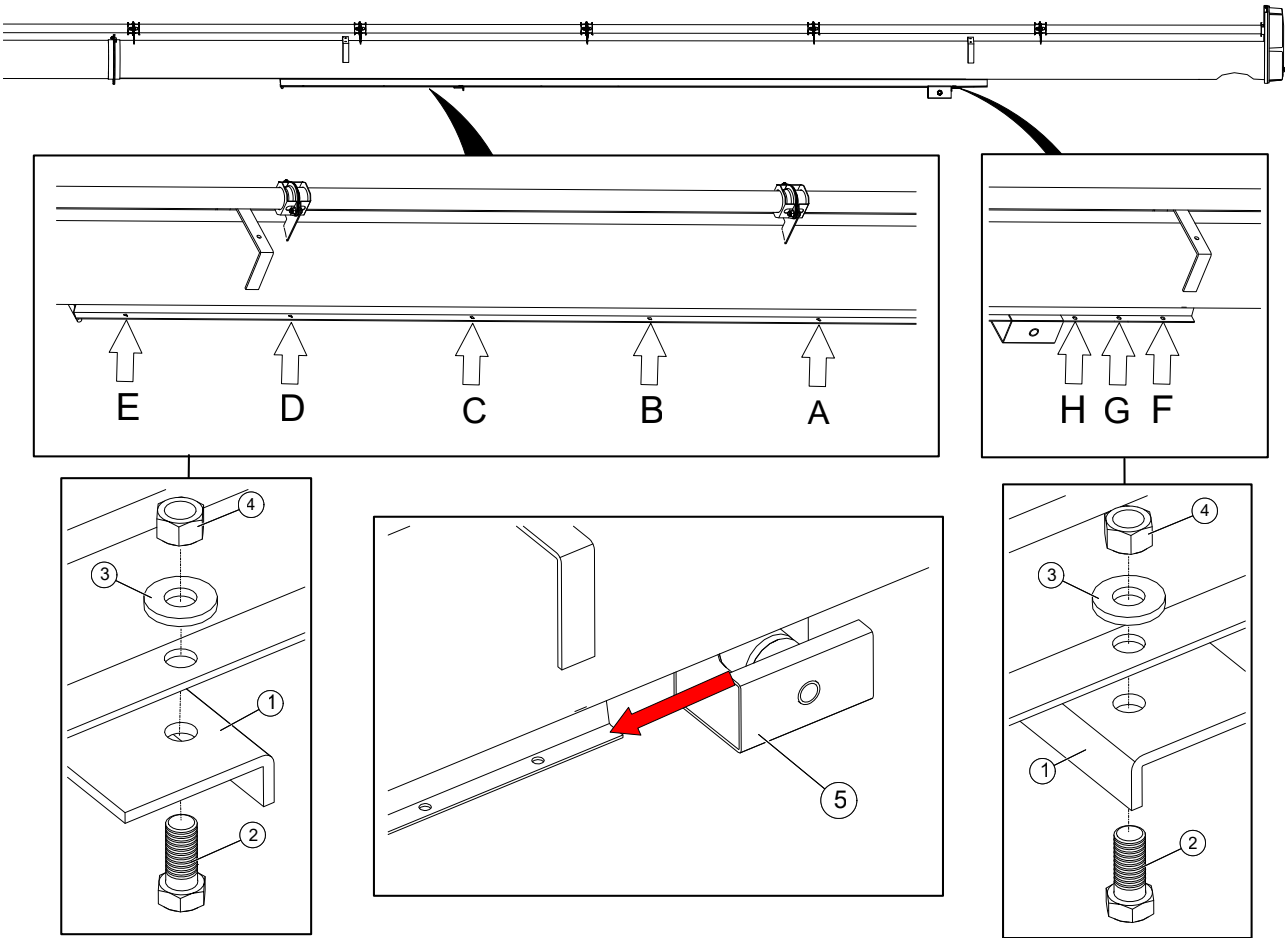
10" Models



1	flight connector shaft	3	lock nut, 7/16"
2	bolt, 7/16" x 3"	4	bolt, 7/16" x 1"

4.6. Install the Track Stops

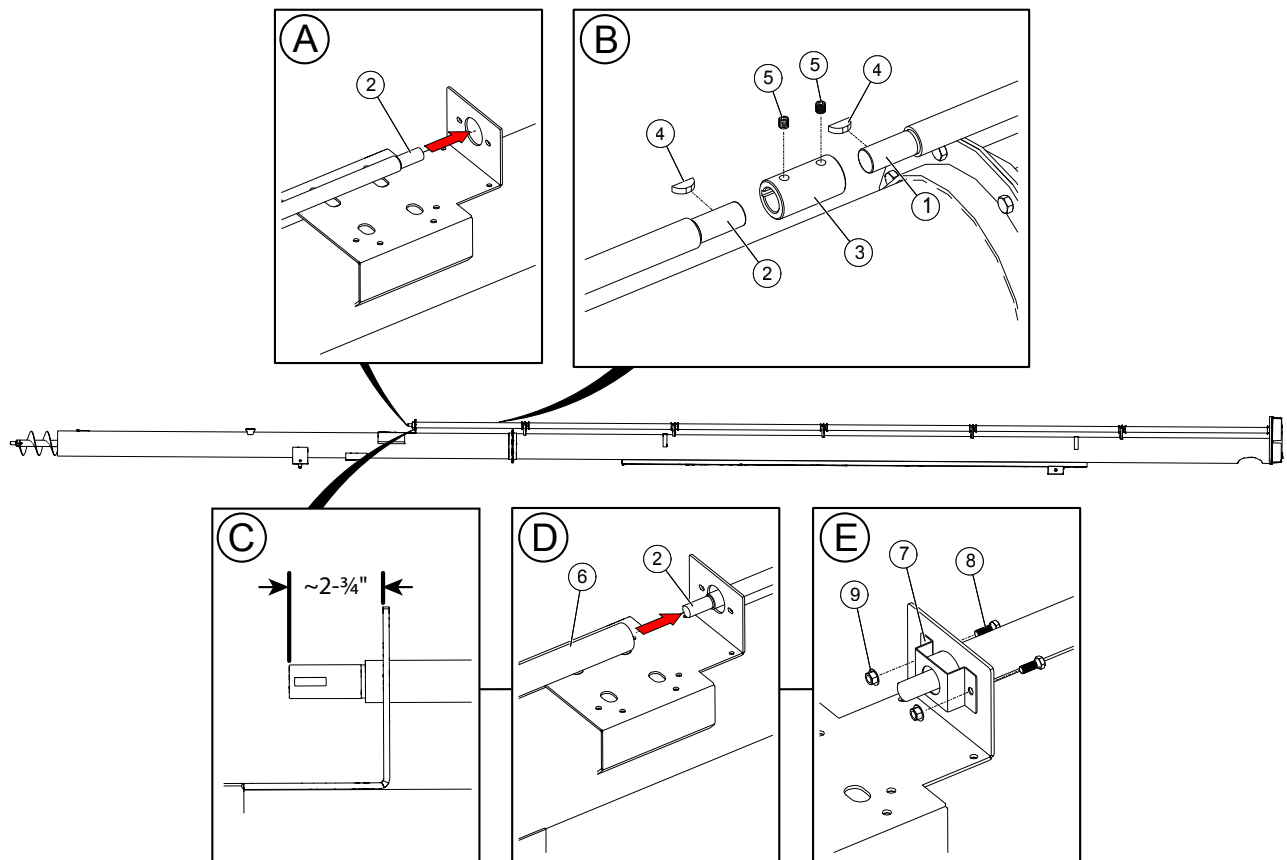
	31'	36'	41'	46'	51'
Lower Track Stop Location	A	B	C	D	E
Upper Track Stop Location	H	H	G	G	G



Assembly Note:			
• Slide track shoe onto track before attaching upper track shoe.			
1	track stop	4	lock nut, 7/16"
2	bolt, 7/16" x 1"	5	track shoe
3	track washer, 7/16"		

4.7. Assemble the Driveshaft

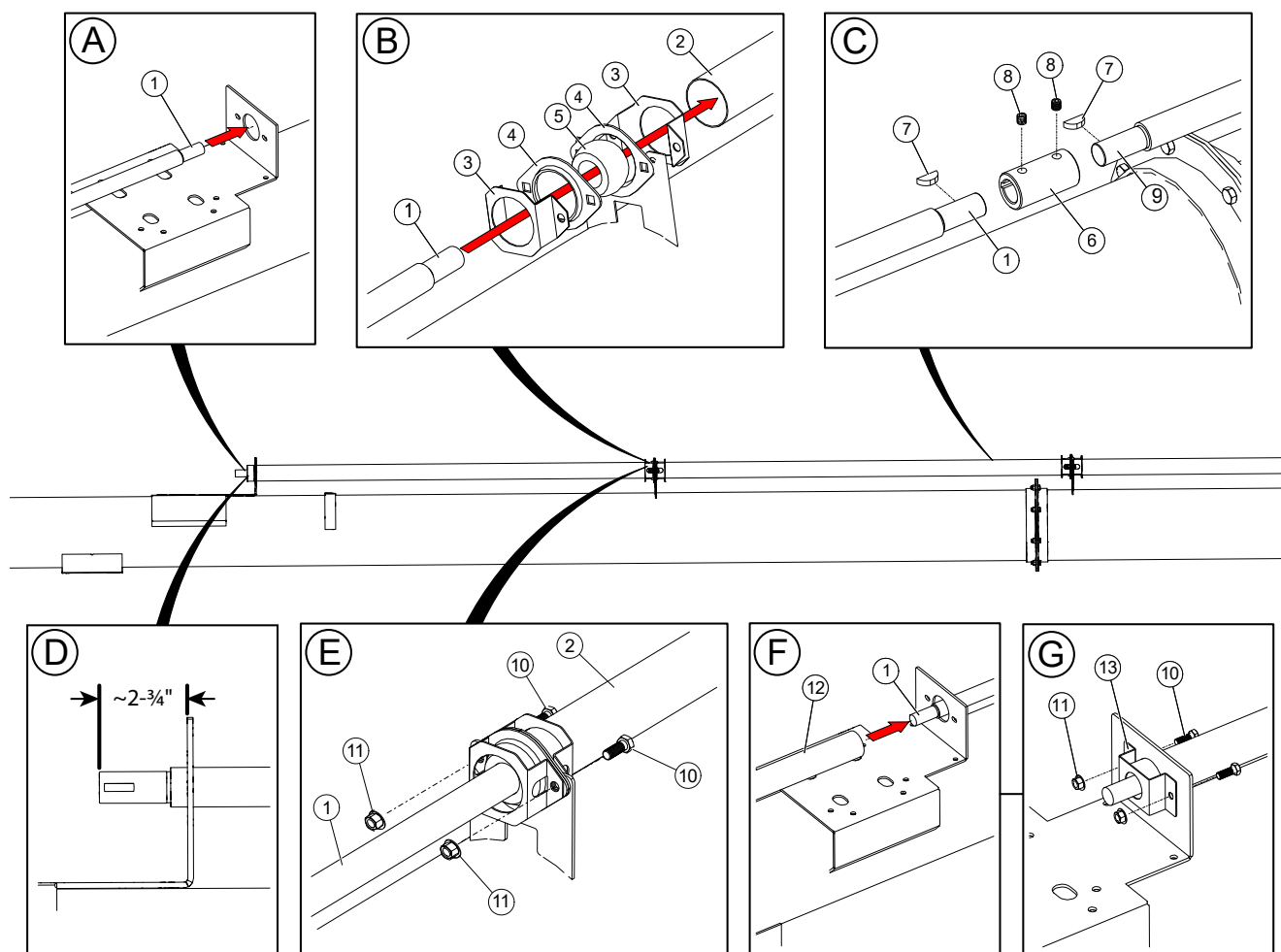
36'/41' Models



Assembly Note:

- Depending on model, some steps may not be required.

1	middle driveshaft (pre-installed)	6	lower driveshaft guard
2	lower driveshaft	7	guard hanger bracket
3	driveshaft connector	8	bolt, 3/8" x 3/4"
4	woodruff key, 1/4" x 1"	9	whiz nut, 3/8"
5	set screw, 3/8" x 3/8"		

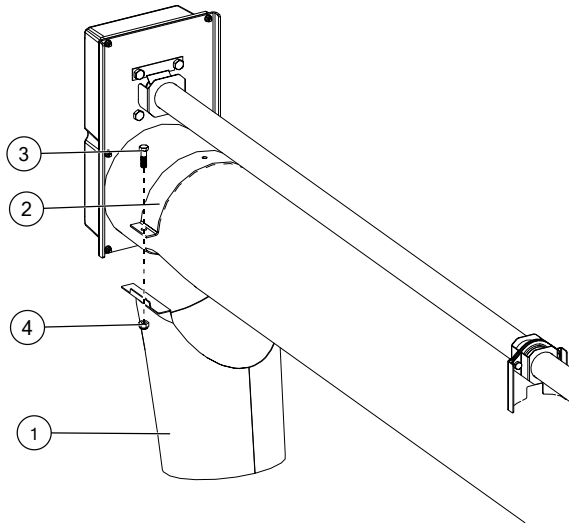
46'/51' Models**Assembly Notes:**

- The wood bearing, flange and flange bearing bracket are pre-installed; these will need to be removed before installing the driveshaft.
- Slide the driveshaft through the wood bearing assembly and upper driveshaft guard, then slide the guard down to connect the middle and lower driveshafts.

1	lower driveshaft	8	set screw, 3/8" x 3/8"
2	driveshaft guard	9	middle driveshaft (pre-installed)
3	flange bearing hanger bracket	10	bolt, 3/8" x 3/4"
4	flange, 1-1/4"	11	whiz nut, 3/8"
5	wood bearing	12	lower driveshaft guard
6	driveshaft connector	13	guard hanger bracket
7	woodruff key, 1/4" x 1"		

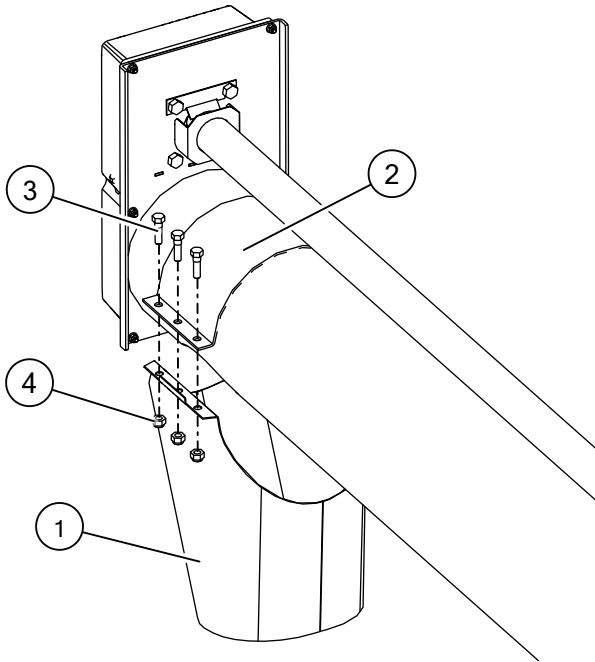
4.8. Install the Spout

8" Models



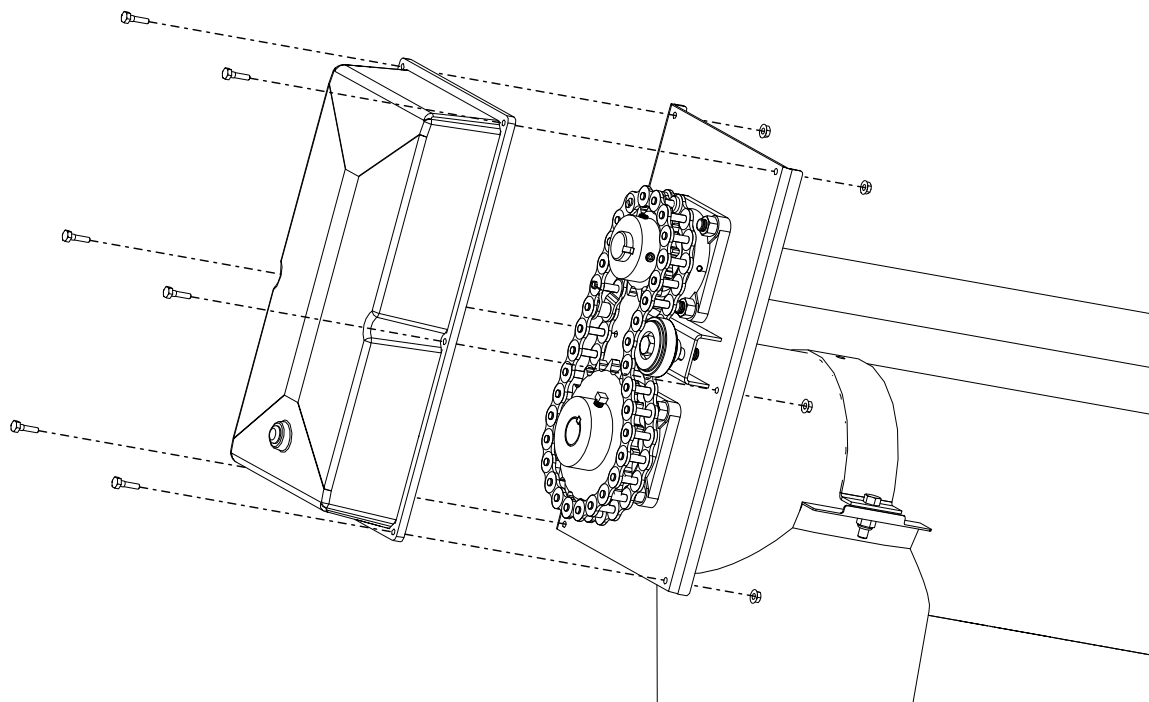
1	spout
2	half clamp
3	bolt, 7/16" x 1-1/2"
4	lock nut, 7/16"

10" Models



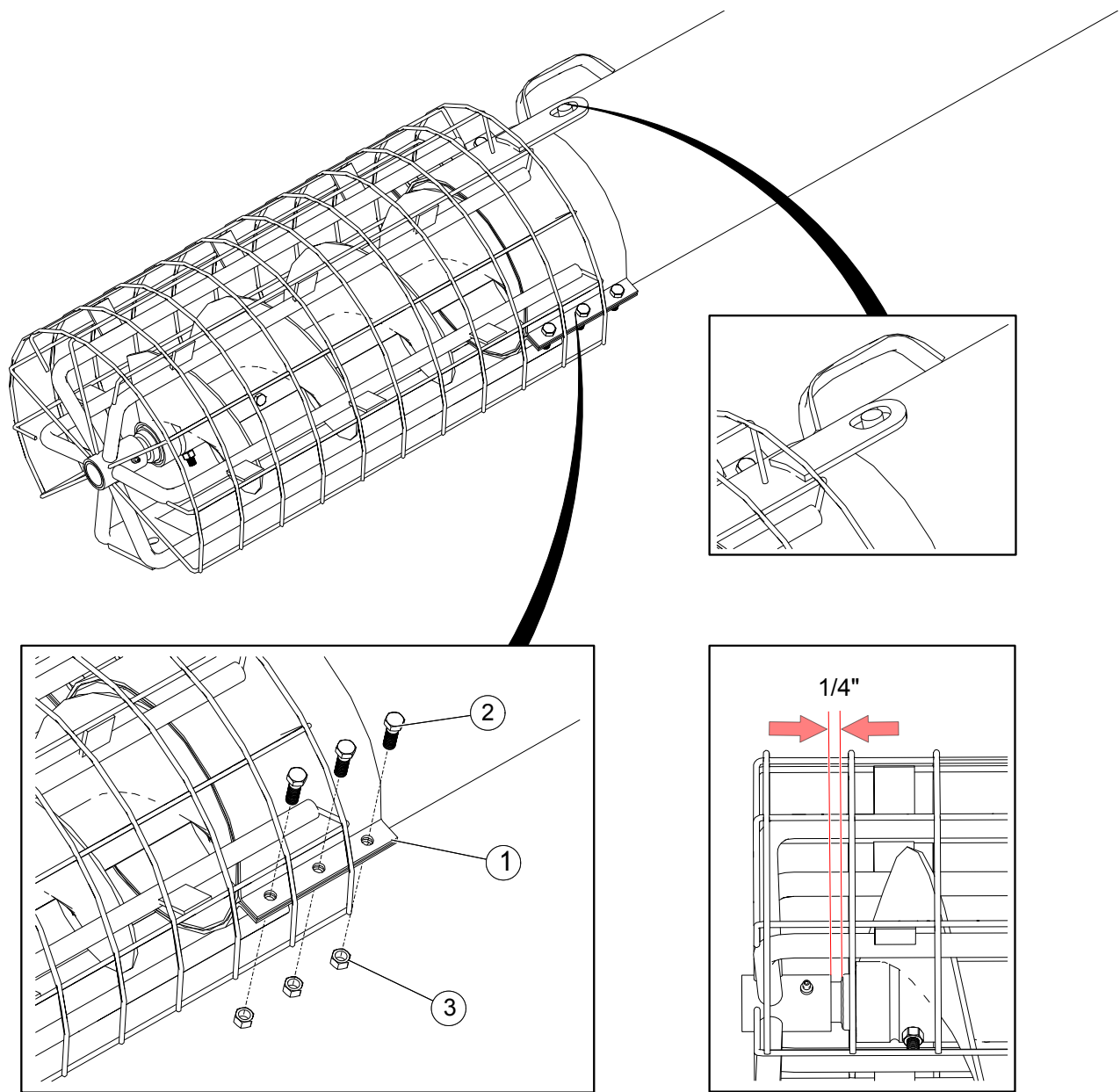
1	spout
2	wide half clamp
3	bolt, 7/16" x 1-1/2"
4	lock nut, 7/16"

4.9. Add Grease to the Head Cover



1. Remove the head cover from the discharge end.
2. Fill the head cover to plug level with grease.
3. Lubricate the chain.
4. Re-install the head cover.

4.10. Install the Intake Cage

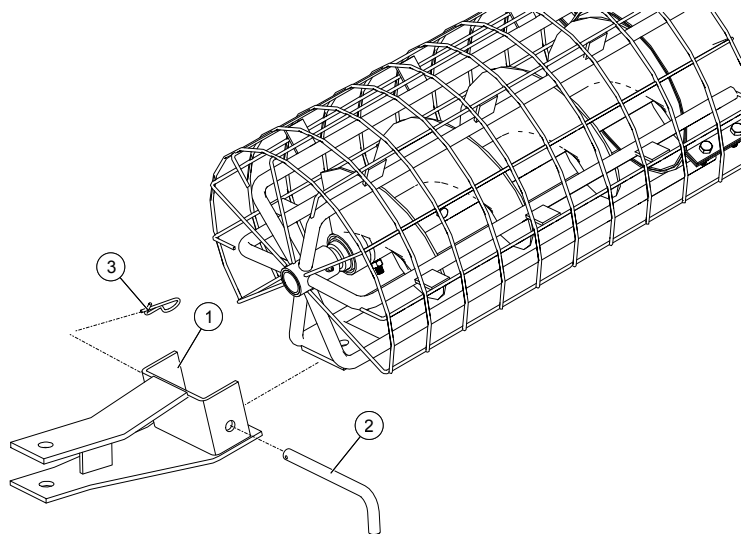


Assembly Notes:

- Ensure the slot on intake cage engages the retention pin on lower tube.
- Maintain a 1/4" clearance between the bushing and the end of the flight.

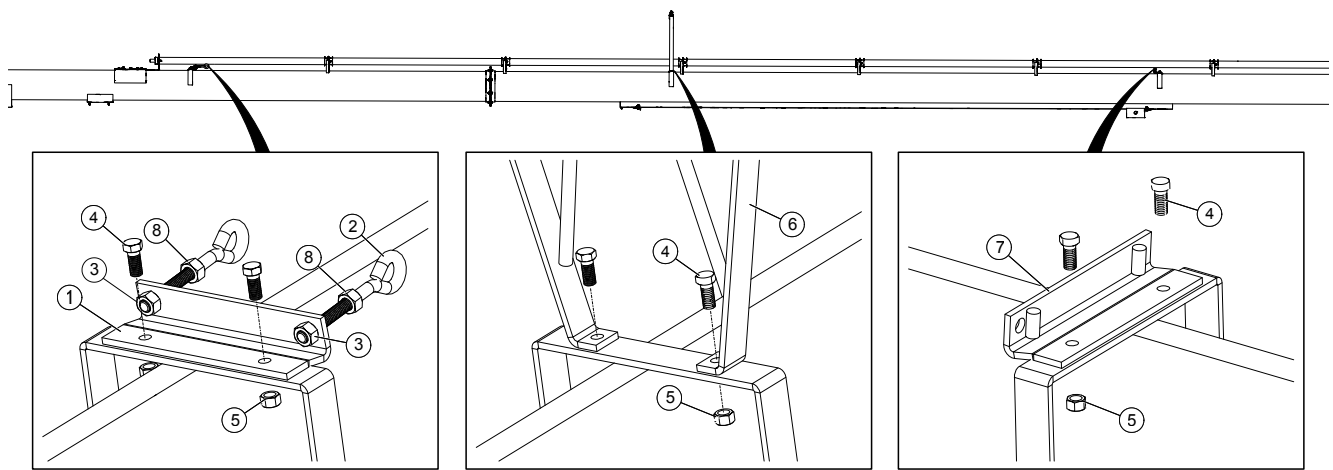
1	intake cage	3	lock nut, 7/16"
2	bolt, 7/16" x 1-1/4"		

4.11. Install the Hitch

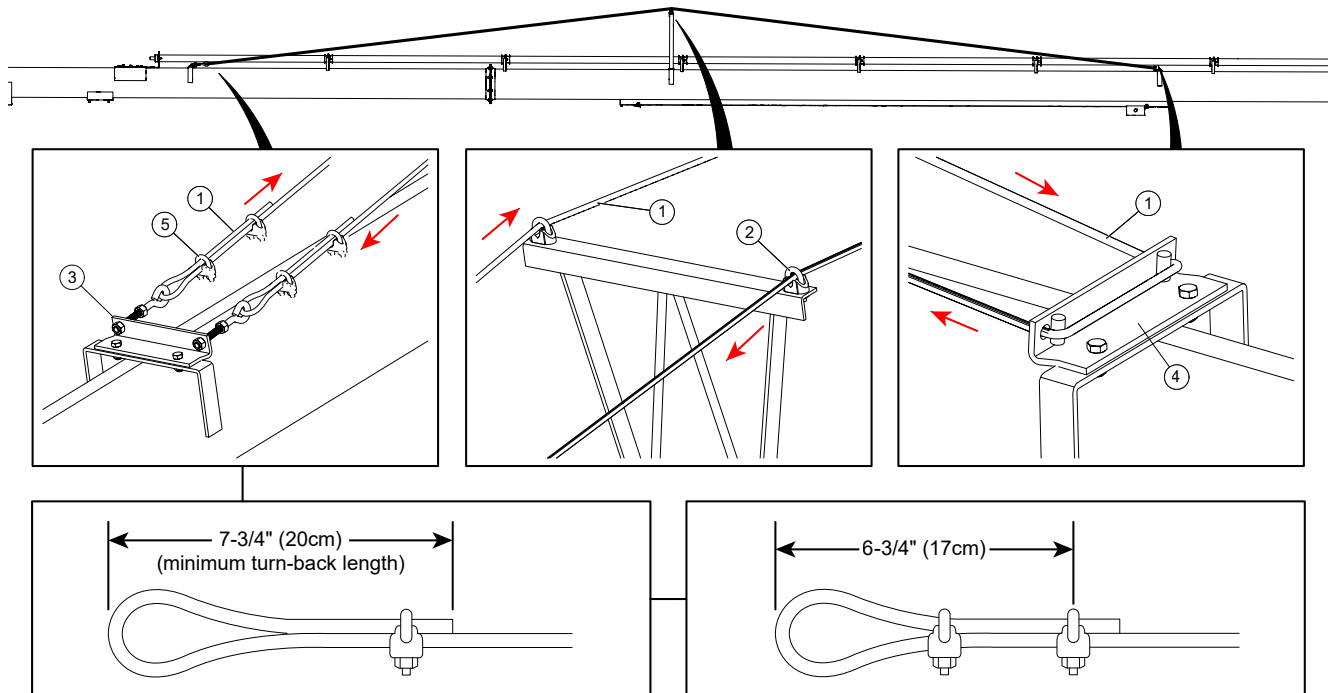


1	clevis hitch
2	clevis pin
3	grip clip

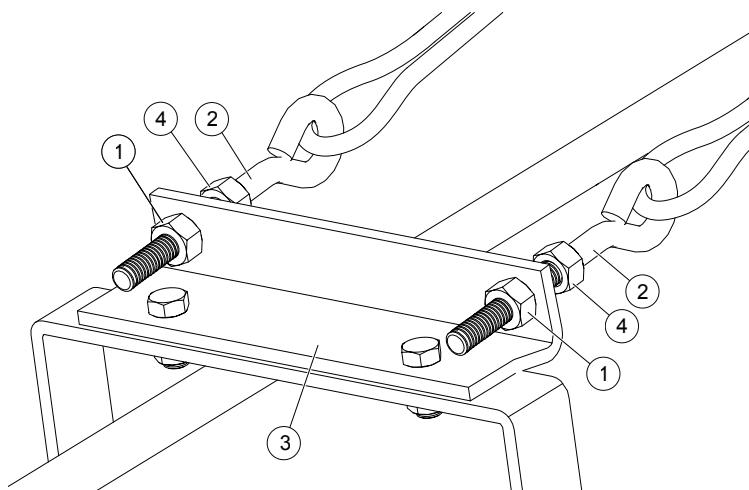
4.12. Install the Truss Tower and Cable (51' Model)



1	truss cable anchor bracket, bottom	5	lock nut, 7/16"
2	eyebolt, 1/2"	6	truss bracket
3	lock nut, 1/2"	7	truss cable anchor (with welded rods)
4	bolt, 7/16" x 1"	8	hex nut, 1/2"



1	cable	4	truss cable anchor (with welded rods)
2	cable clamp, 1/4"	5	cable clamp, 5/16"
3	truss cable anchor bracket, bottom		



1	lock nut, 1/2"
2	eyebolt, 1/2"
3	truss cable anchor, bottom
4	hex nut, 1/2"

- Thread truss cable through eyebolt and double-back 7-3/4" (20 cm) of cable. Secure the cable in place by installing and tightening two 5/16" cable clamps.
 - Apply the first clamp 6-3/4" from the cable loop with the u-bolt over the dead end. The live end rests in clamp saddle. Tighten nuts firmly but do not fully tighten.
 - Apply the second clamp as close to the loop as possible in the same orientation as the first clamp. The live end rests in clamp saddle. Apply tension and tighten nuts firmly but do not fully tighten.
- Tighten the lock nuts evenly to take the remaining slack out of the truss cable.

Important

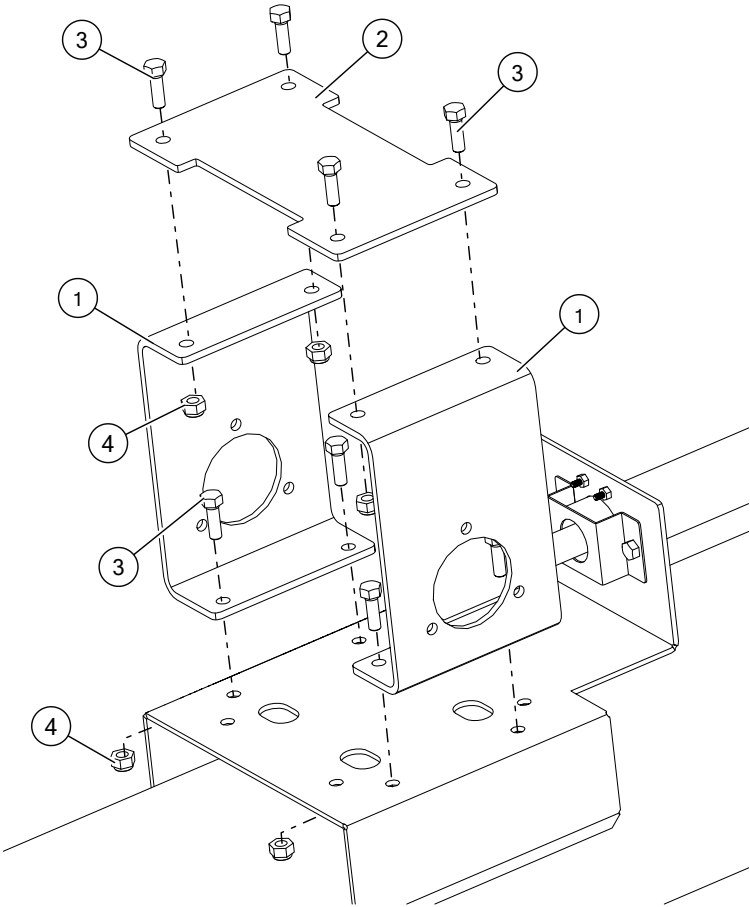
Take slack out of the truss cable only (DO NOT tension the cable). Tension in the cable will cause the auger to droop at the flange when in the lowered position.

- 3. Check for proper side-to-side alignment.
- 4. Tighten all cable clamps to the recommended torque.

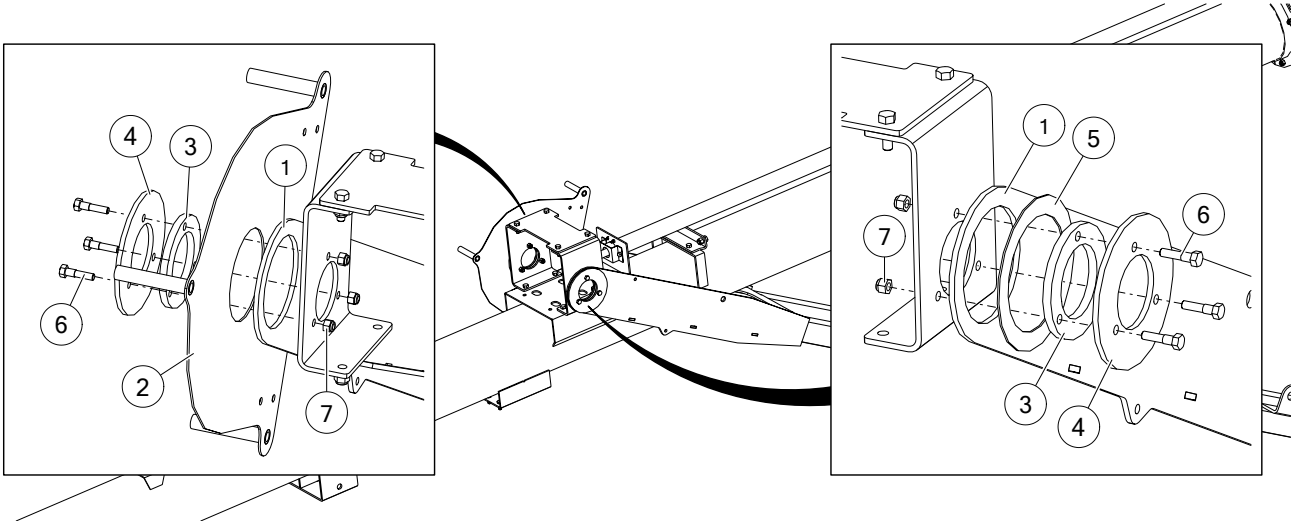
Cable Clamp	Nut Torque
1/4"	15 ft·lb
5/16"	20 ft·lb

- 5. Tighten the hex nuts against the cable anchor bracket.

4.13. Attach the Lower Frame to the Tube



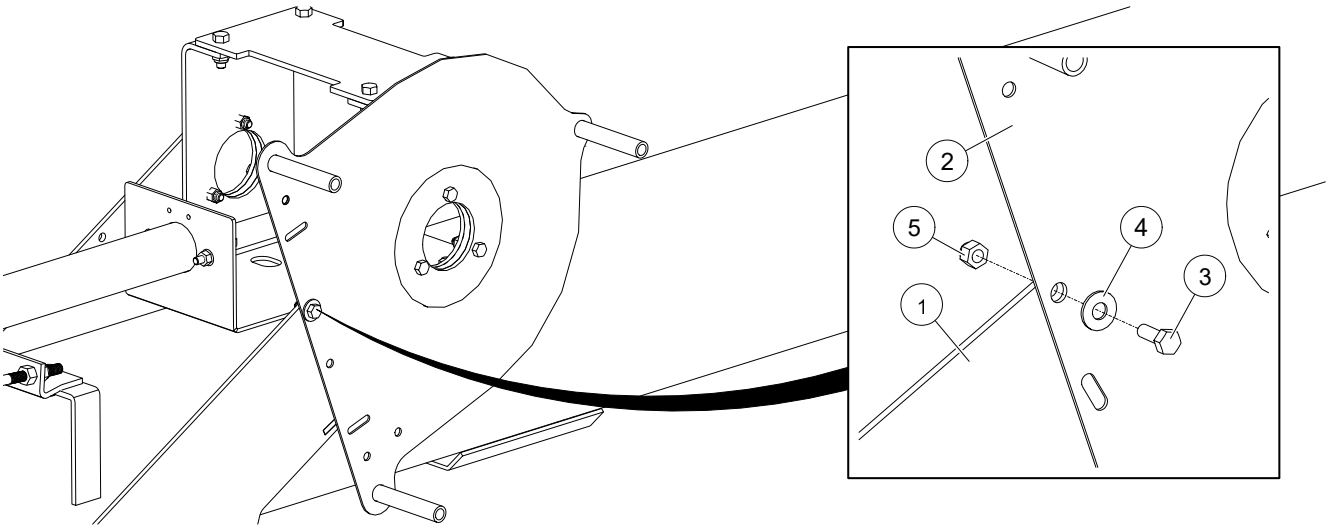
1	lower frame connect bracket
2	top cover bracket
3	bolt, 7/16" x 1-1/4"
4	lock nut, 7/16"



Assembly Note:

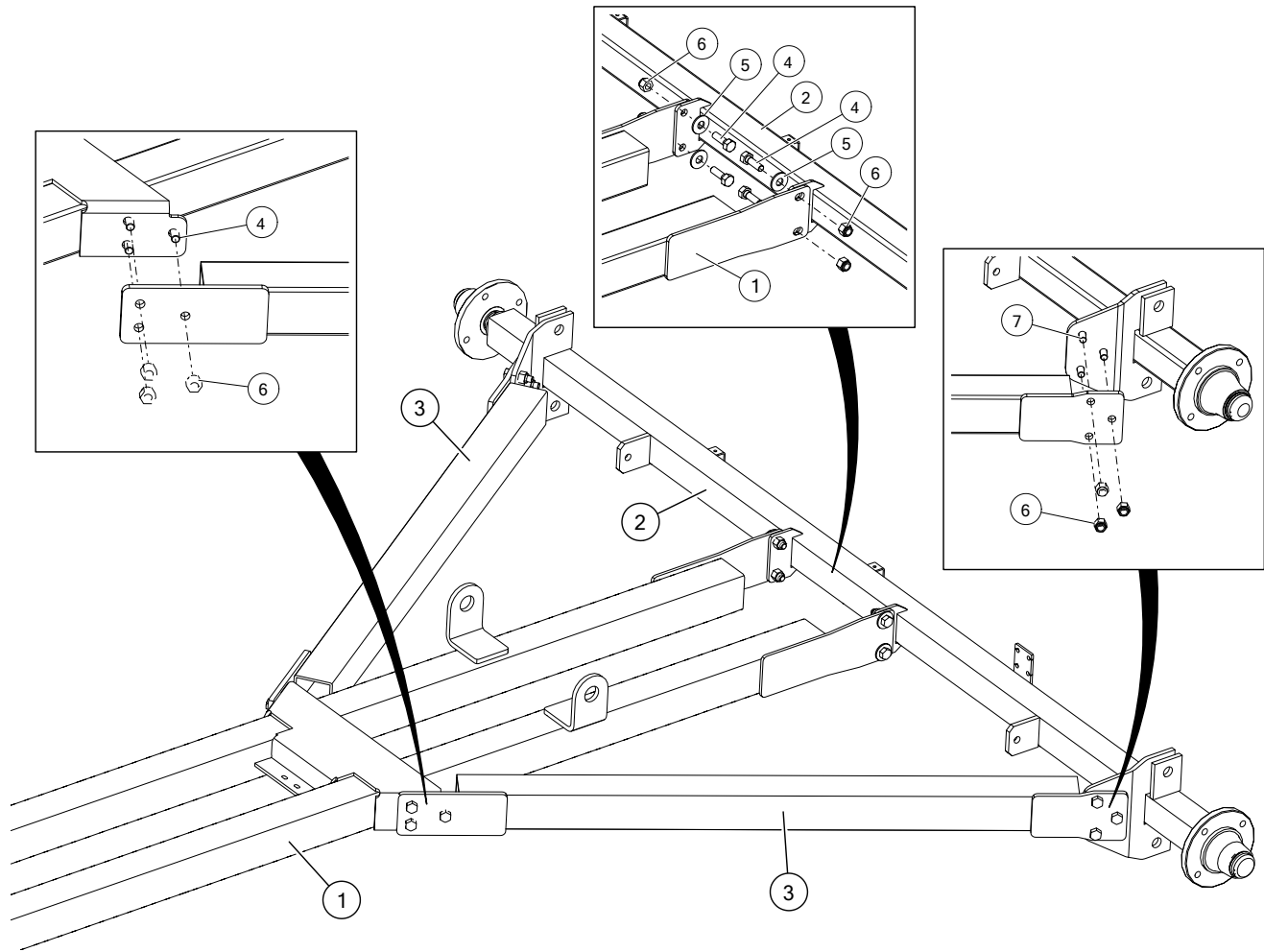
- Ensure that the pulley shim guard is centered on the lower arm bolt plates.

1	lower frame	5	spacer
2	pulley shim guard	6	bolt, 3/8" x 1-1/2"
3	bolt plate, small	7	lock nut, 3/8"
4	bolt plate, large		



1	lower frame	4	flat washer, 3/8"
2	pulley shim guard	5	lock nut, 3/8"
3	bolt, 3/8" x 1"		

4.14. Attach the Lower Frame to the Axle

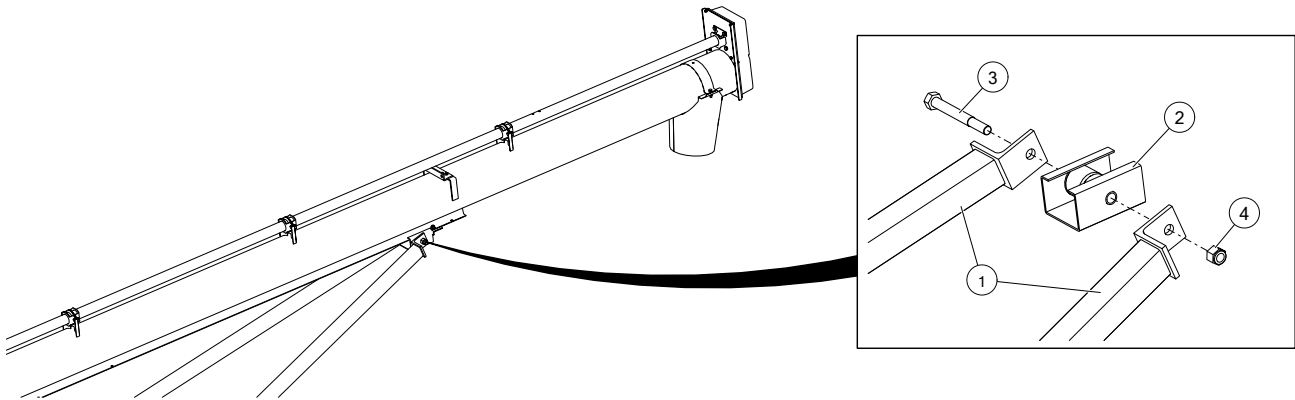


Assembly Notes:

- Loosely install the lower frame to the axle assembly.
- Loosely install all the lower support frame hardware.
- Tighten all hardware once all of the hardware has been placed.

1	lower frame	5	flat washer, 1/2"
2	axle assembly	6	lock nut, 1/2"
3	lower support frame	7	bolt, 1/2" x 1-3/4"
4	bolt, 1/2" x 1-1/2"		

4.15. Attach the Upper Frame to the Tube

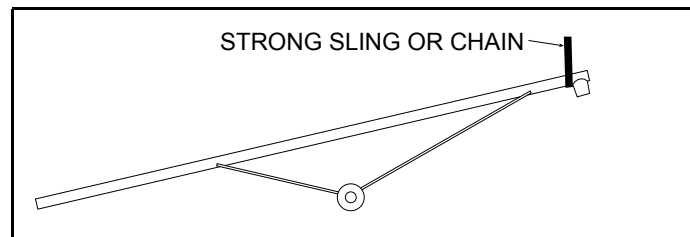


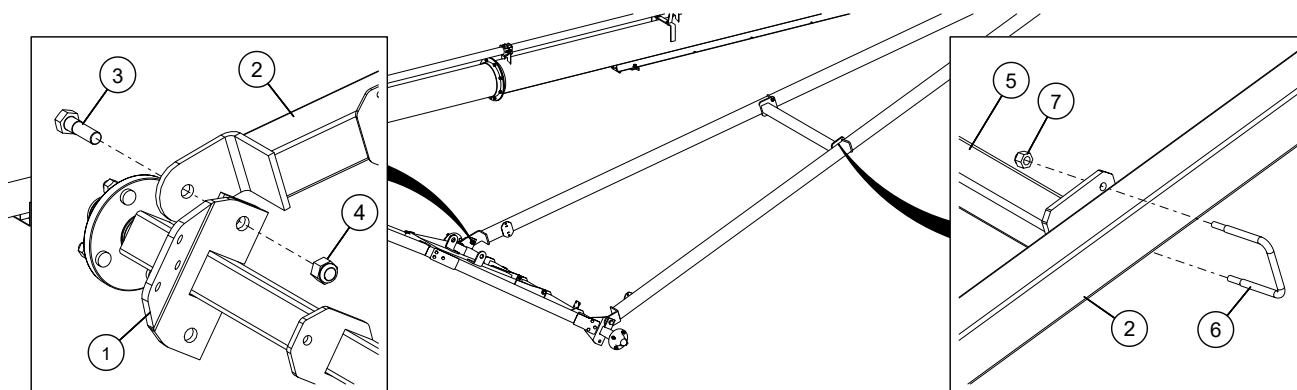
1	upper frame arm	3	bolt, 3/4" x 6-1/2"
2	track shoe (installed in a previous section)	4	lock nut, 3/4"

4.16. Attach the Upper Frame to the Axle

Important

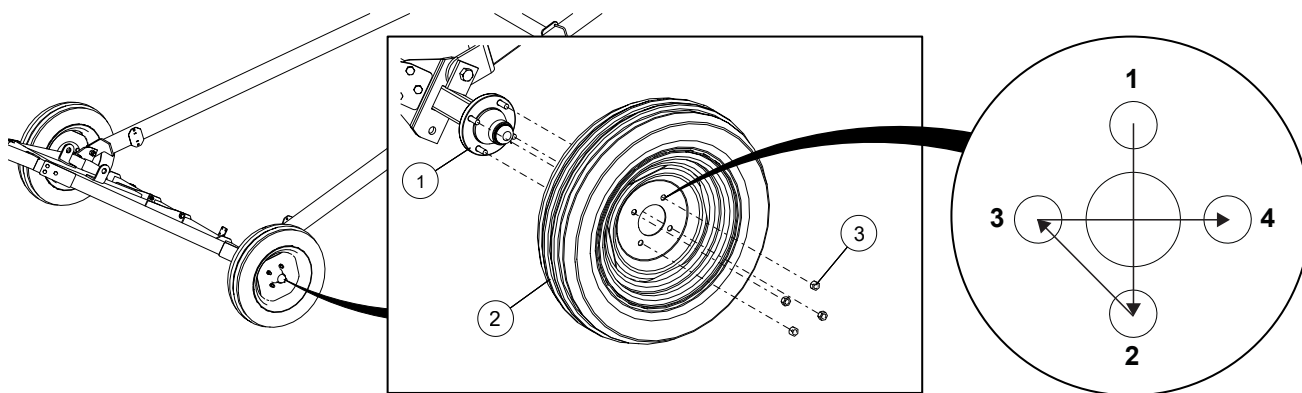
Be sure to use proper hoisting equipment and procedures when raising the discharge end of the auger. Lock out the hoist apparatus prior to working around or under the raised tube.



**Assembly Notes:**

- Remove the stand from the intake end of the auger tube and raise the discharge end with a block and tackle or a front end loader and a strong sling or chain. Height should be sufficient so the frame can be easily attached to the axle.
- Upper frame cross member on all models, except 31'.

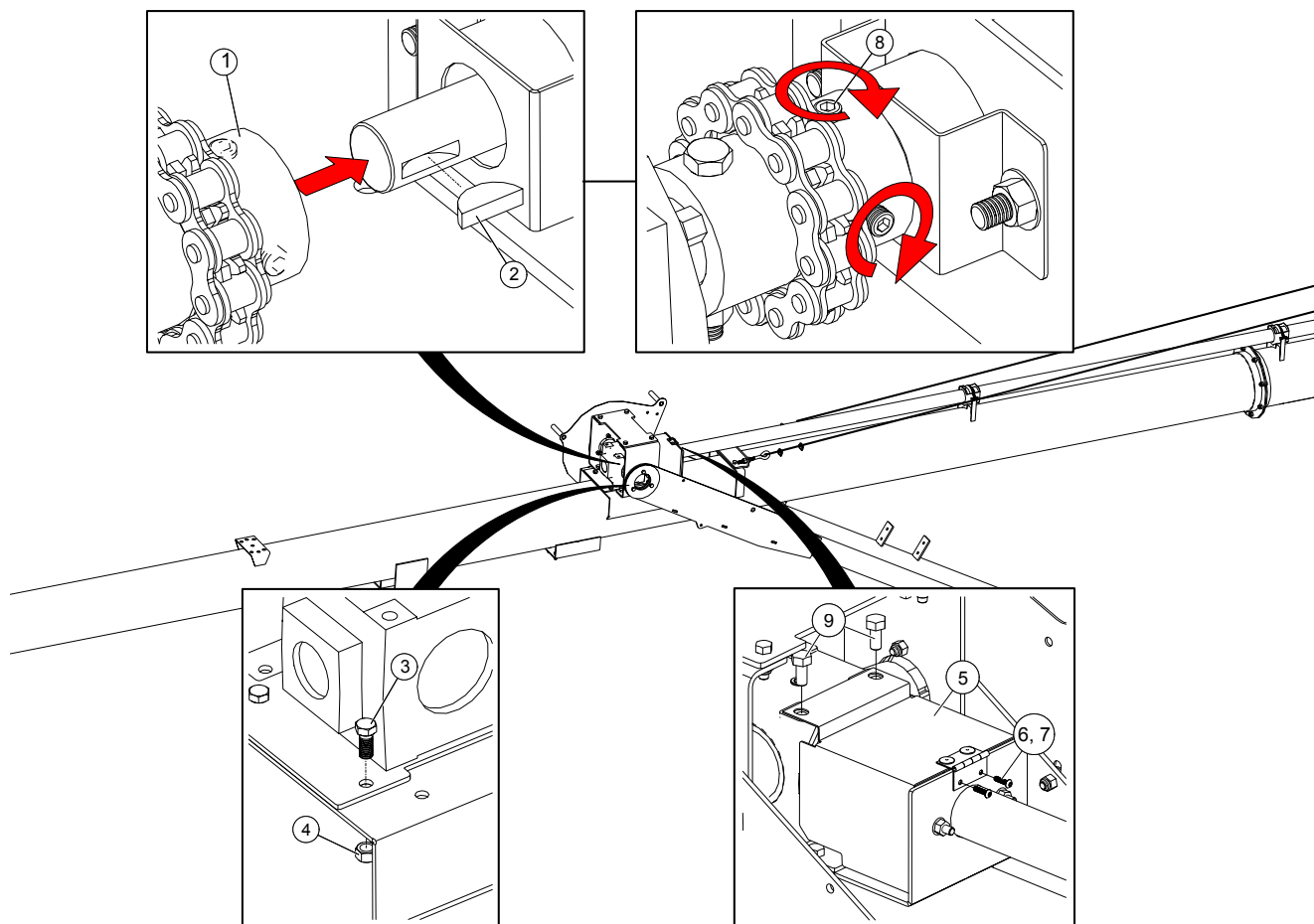
1	axle	6	square U-bolt, 1/2" x 2-5/8" x 4" (36'/41' models)
2	upper frame arm		square U-bolt, 3/8" x 3-1/16" x 4" (46'/51' models)
3	bolt, 3/4" x 2-1/2"	7	lock nut, 1/2" (36'/41' models)
4	lock nut, 3/4"		lock nut, 3/8" (46'/51' models)
5	upper frame cross member		

**Assembly Notes:**

- Check that air pressure in the tires match pressure indicated on the tire sidewall.
- Torque the wheel nuts to 80 ft·lb ± 10 ft·lb (108.5 N·m ± 13.5 N·m) using the pattern shown.

1	hub	3	wheel nut, 1/2"
2	wheel		

4.17. Install the Gearbox

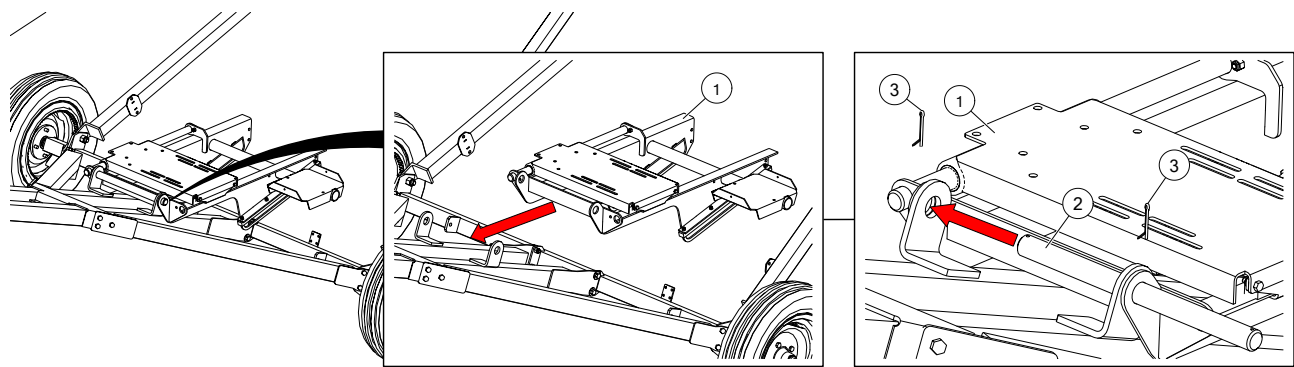


Assembly Notes:

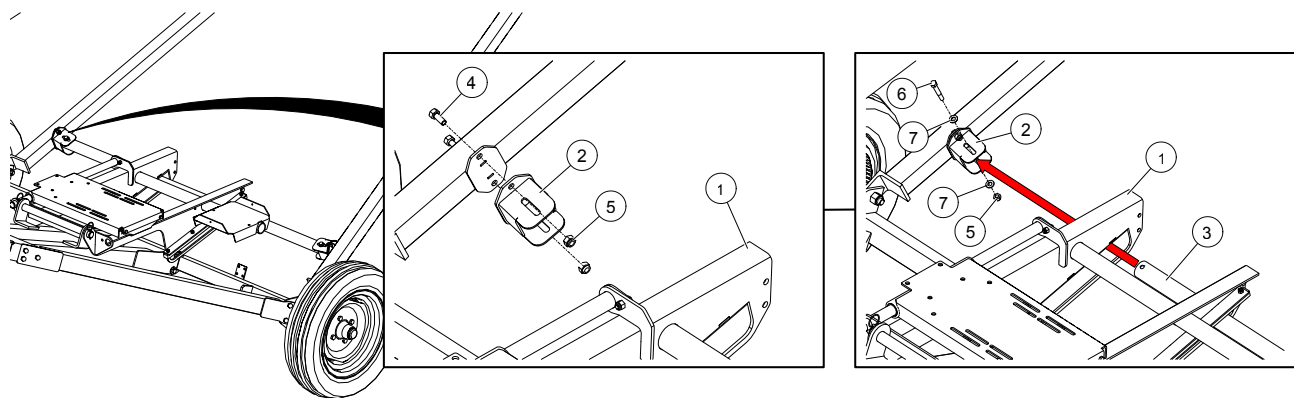
- Check the gearbox oil level; gearbox should be half full. Use only EP90 lube oil and fill to HALF FULL only.
- The ends of the gearbox shaft and the driveshaft should be flush with the inside of the chain coupler sprockets.
- If the driveshaft is too long or too short, do the following:
 - If the driveshaft is too long, take up the extra length in the driveshaft connector.
 - If the driveshaft is too short, remove the headcover, chain, sprocket, and lock collar at the top of the upper tube to adjust the two driveshafts.

1	gearbox assembly	6	bolt, #10 x 3/4"
2	woodruff key, 1/4" x 1"	7	lock nut, #10
3	bolt, 7/16" x 1"	8	set screw, 3/8" x 3/8"
4	lock nut, 7/16"	9	bolt, 1/2" x 3/4"
5	chain coupler guard assembly		

4.18. Install the Motor Mount



1	engine slider assembly	3	cotter pin, 3/16" x 1-3/4"
2	motor pivot pin		

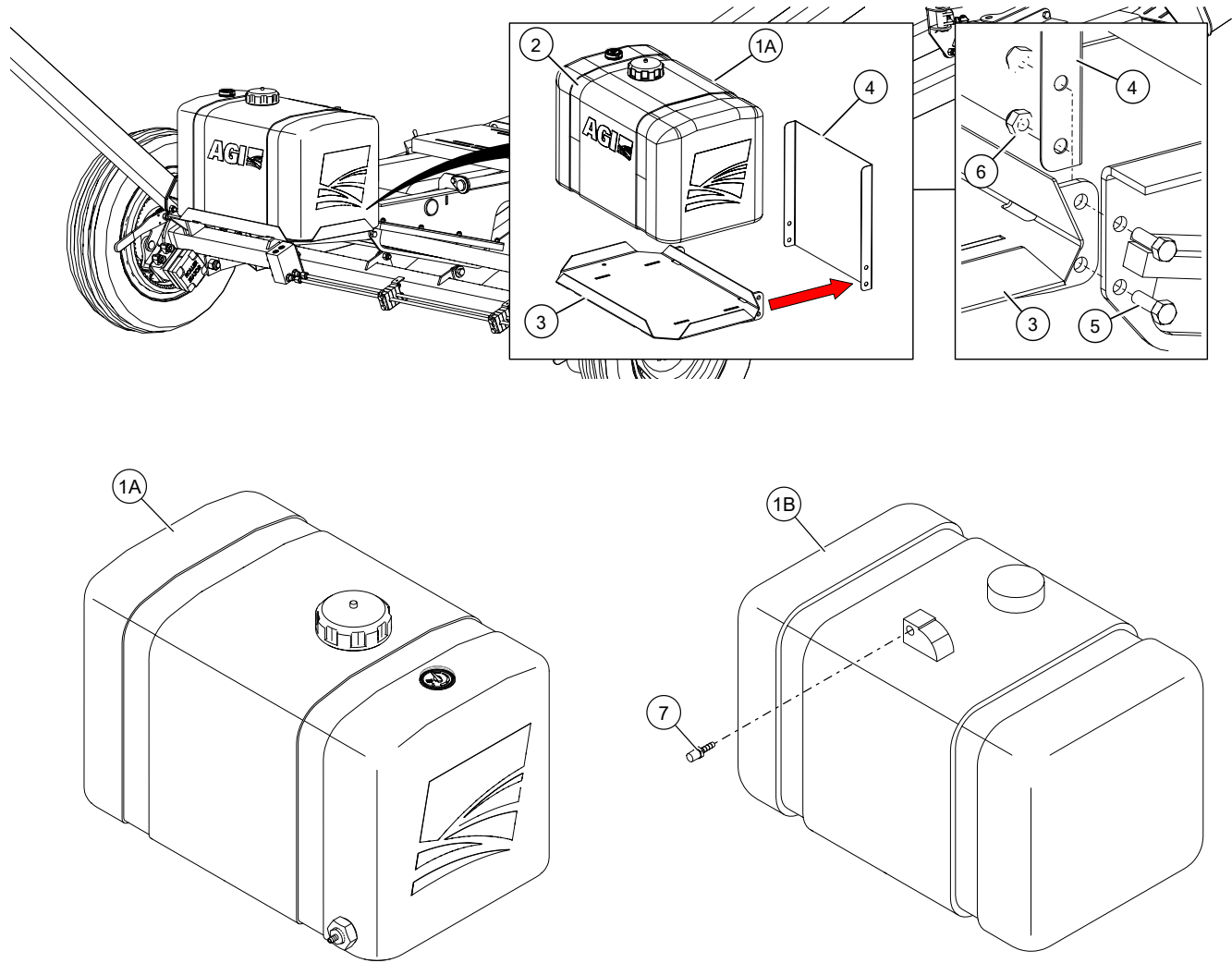


Assembly Note: <ul style="list-style-type: none">Ensure leveller tube is through slots in the engine slider assembly before attaching to leveller tube mount brackets.			
1	engine slider assembly	5	lock nut, 7/16"
2	leveller tube mount bracket	6	bolt, 7/16" x 3"
3	leveller tube	7	flat washer, 7/16"
4	bolt, 7/16" x 1"		

4.19. Install the Gas Drive

4.19.1 Install the Battery and Fuel Tank

Fuel Tank

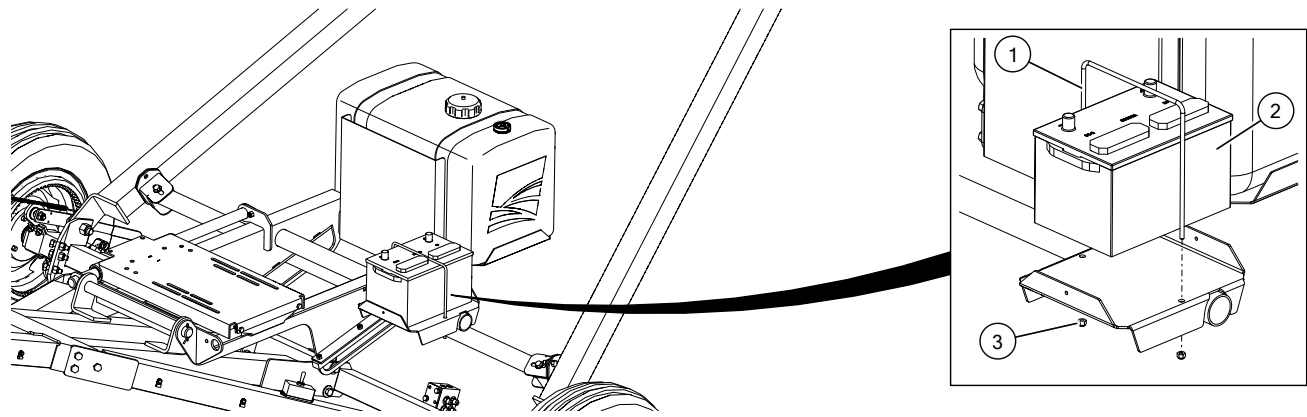


Assembly Notes:

- Route the fuel line between the heat shield and gas tank.
- **EPA Fuel Tank:** Torque the brass fitting to 10 ft-lbs. Use teflon tape.

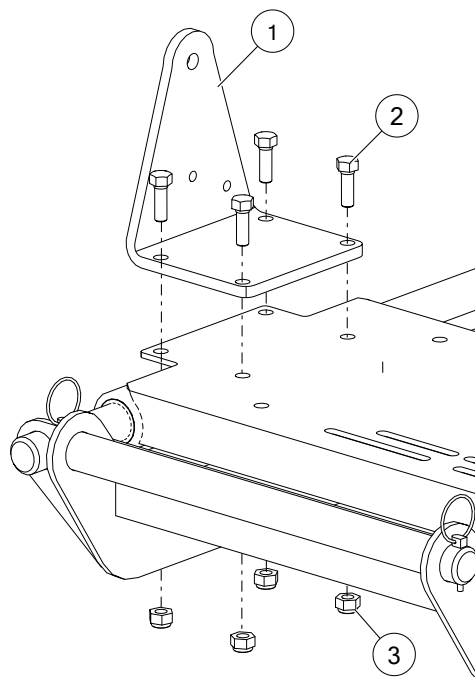
1A	non-EPA fuel tank	4	heat shield
1B	EPA fuel tank	5	bolt, 7/16" x 1-1/4"
2	fuel tank straps	6	lock nut, 7/16"
3	gas tank mount	7	125-4B fitting

Battery



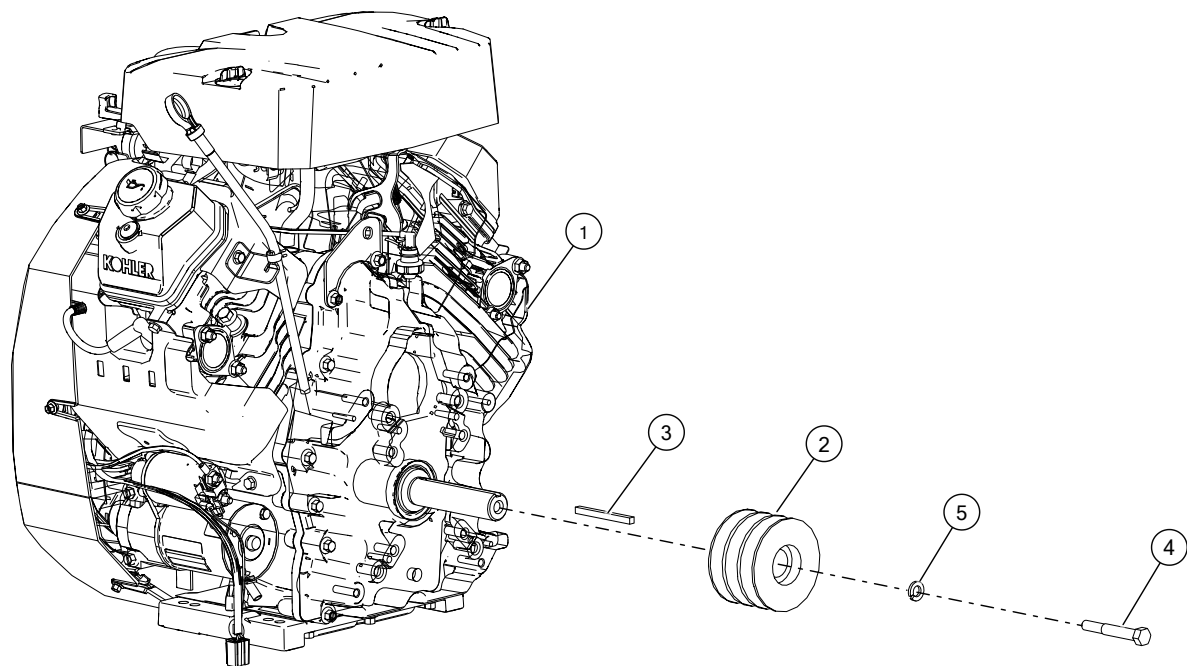
1	U-bolt, 1/4" x 9-3/4" x 8-1/4"	3	lock nut, 1/4"
2	battery		

4.19.2 Install the Guard Attach Plate



1	guard attach plate
2	bolt, 7/16" x 1-1/4"
3	lock nut, 7/16"

4.19.3 Install the Engine Pulley

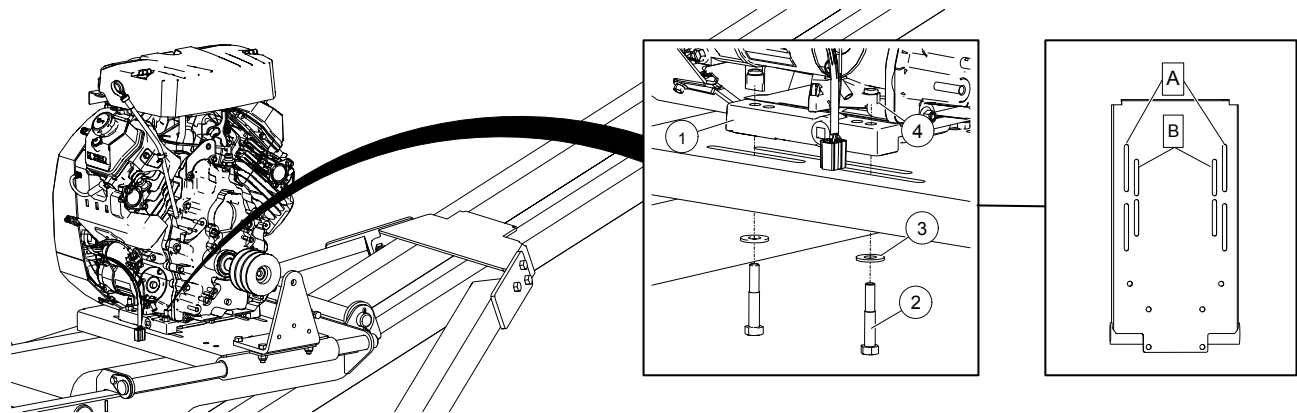


Assembly Notes:

- For 10 (46'/51') models: Triple engine pulley is used.
- Apply anti-seize to the engine shaft where the engine pulley will slide on.

1	gas engine motor	3	square key, 1/4" x 3"
2A	engine pulley, double	4	bolt, 7/16" x 3"
2B	engine pulley, triple	5	lock washer, 7/16"

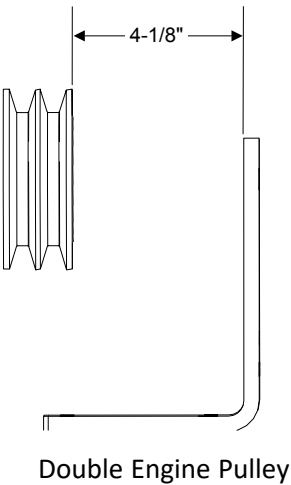
4.19.4 Install the Motor



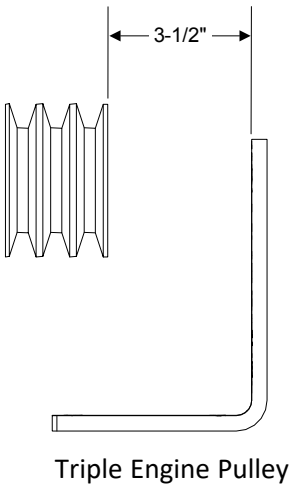
Assembly Notes:

- Place the motor so that the gap between the face of the engine pulley and the inside face of the guard attach bracket is 4-1/8" for the double engine pulley, and 3-1/2" for the triple engine pulley.
- Install the exhaust pipe, muffler and muffler shield to the engine.
 - If using a Vanguard motor for installation, there is a possible interference with the (standard) muffler hitting the belt guards. If this happens, then please contact your local AGI dealer for an alternative.
- Perform all the engine wiring.
- Run a fuel hose from the brass fitting to the fuel filter and secure with hose clamps.

1	gas engine motor	A	Kohler, 32.5 HP & larger
2	bolt, 3/8" x 2-1/4"		Vanguard, 35 HP
3	flat washer, 3/8"	B	Kohler, 27 HP & smaller
4	lock nut, 3/8"		



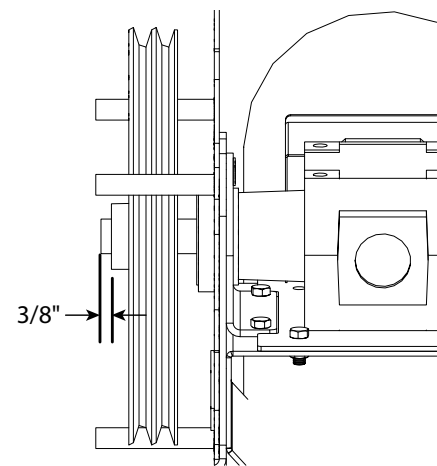
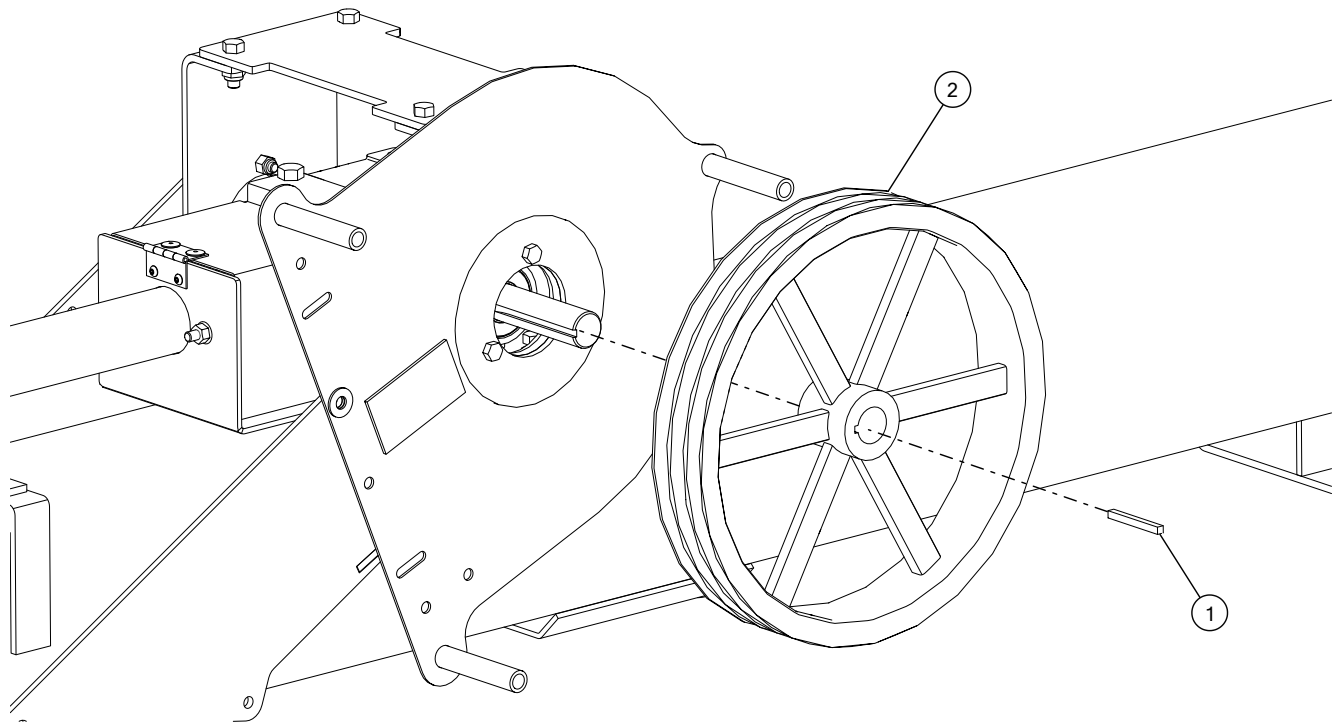
Double Engine Pulley



Triple Engine Pulley

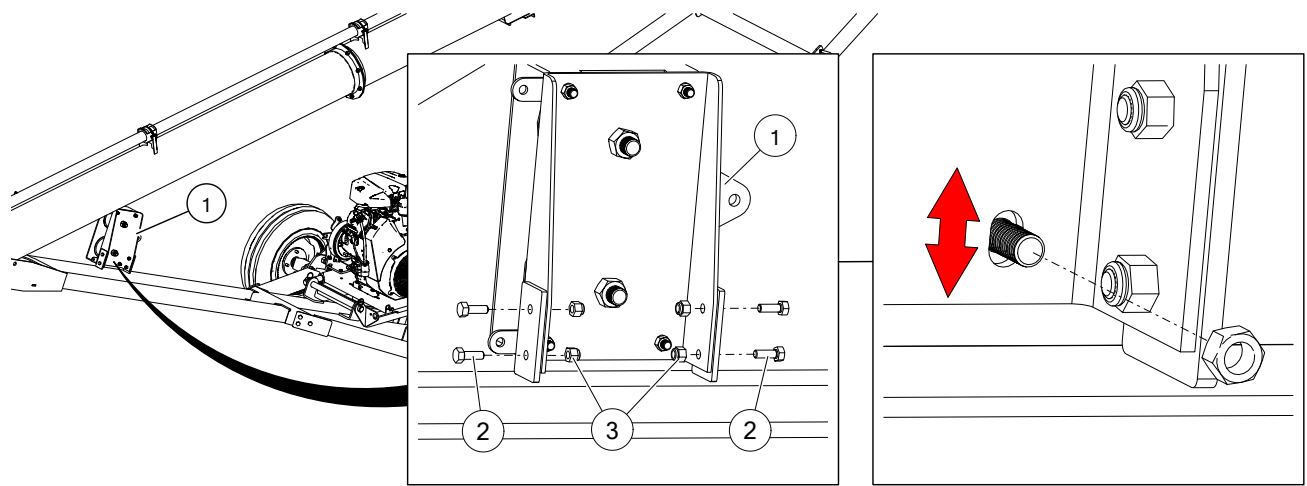
4.20. Install the Drive Components

4.20.1 Install the Gearbox Pulley



Assembly Notes:	
<ul style="list-style-type: none">• Ensure that the hub set screws are toward the outside.• The distance between the face of the gearbox shaft and the outside hub should be 3/8".	
1	square key, 1/4" x 2-1/2"
2A	gearbox pulley, double
2B	gearbox pulley, triple

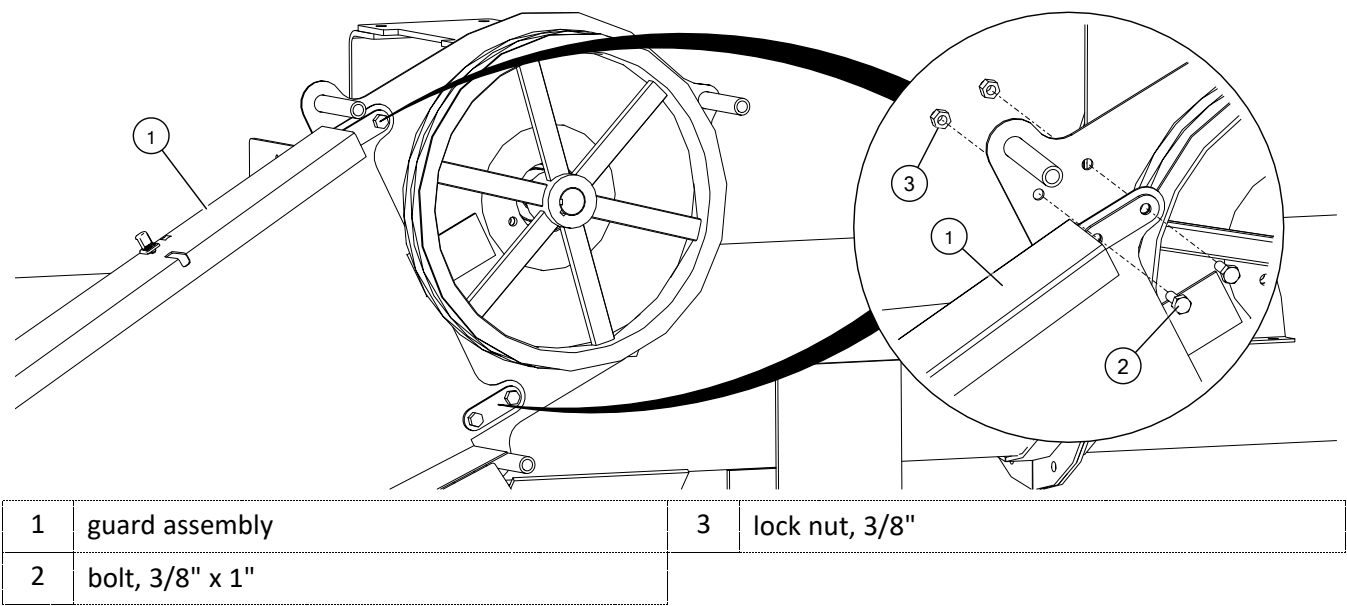
4.20.2 Install the Idler Assembly



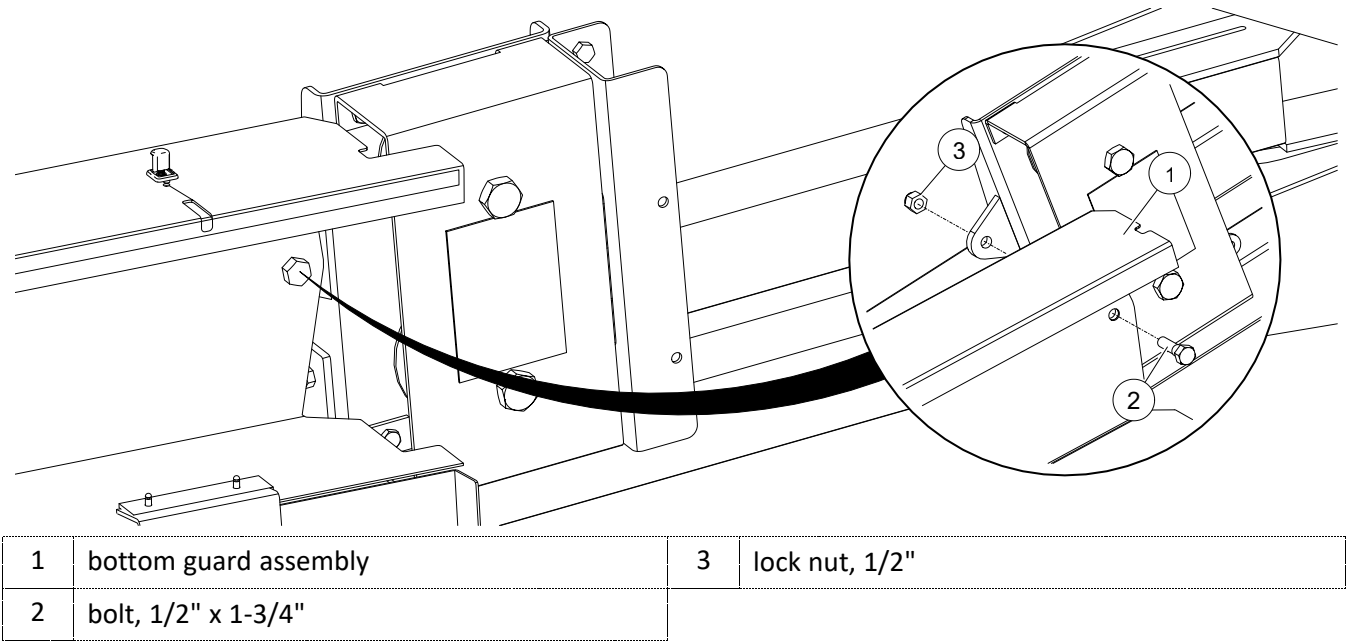
Assembly Notes:			
<ul style="list-style-type: none"> The idler assembly is not required for 31' augers. Use a level/square to ensure the idler assembly is mounted straight. The slots in the main plate can be used to adjust the tilt of the pulleys. 			
1	idler assembly	3	lock nut, 3/8"
2	bolt, 3/8" x 1"		

4.20.3 Install the Guard Assembly

31' Model

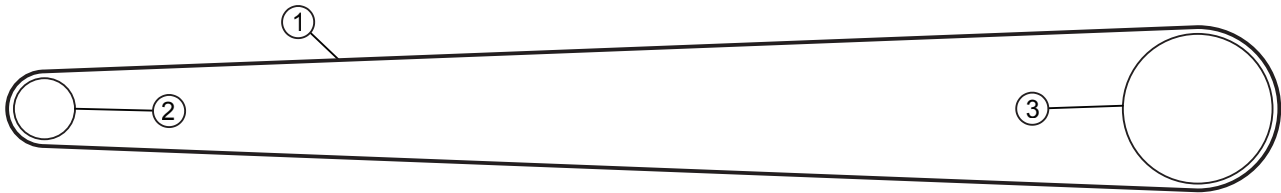


36'/41'/46'/51' Models



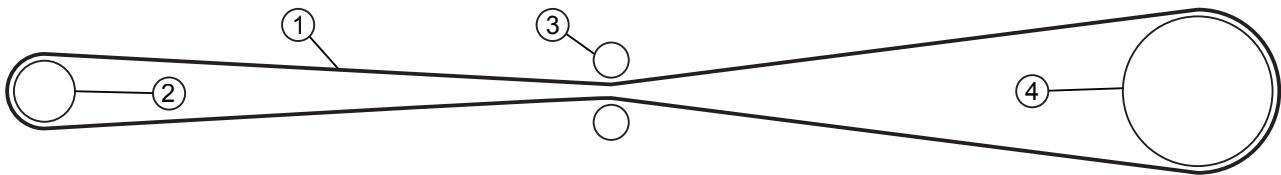
4.20.4 Install the Belt

31' Model



Assembly Note: <ul style="list-style-type: none">The belt must run straight. Check the alignment of the pulleys and adjust if necessary.			
1	belt	3	gearbox pulley
2	engine pulley		

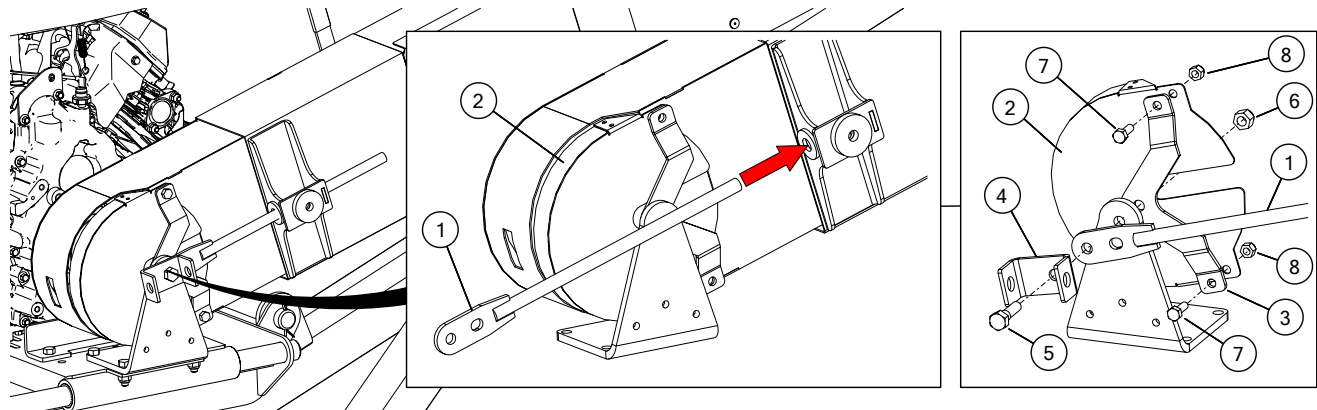
36'/41'/46'/51' Models



Assembly Note: <ul style="list-style-type: none">The belt must run straight. Check the alignment of the pulleys and adjust if necessary.			
1	belt	3	flat idler pulley
2	engine pulley	4	gearbox pulley

4.20.5 Install the Engine Pulley Guard

Installing the Motor Pulley Guard

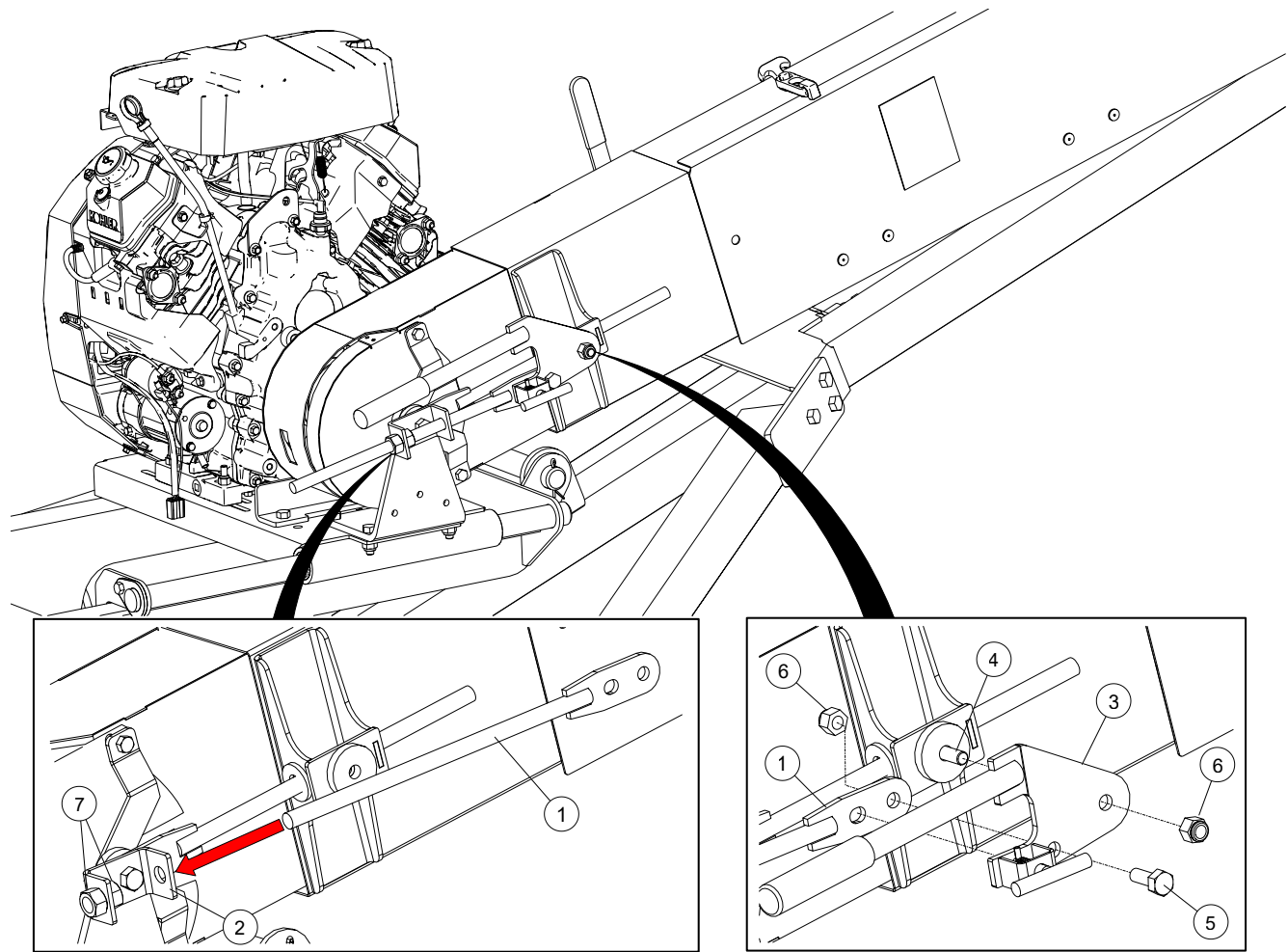


Assembly Note:

- The motor pulley guard is only installed when there is no clutch installed.

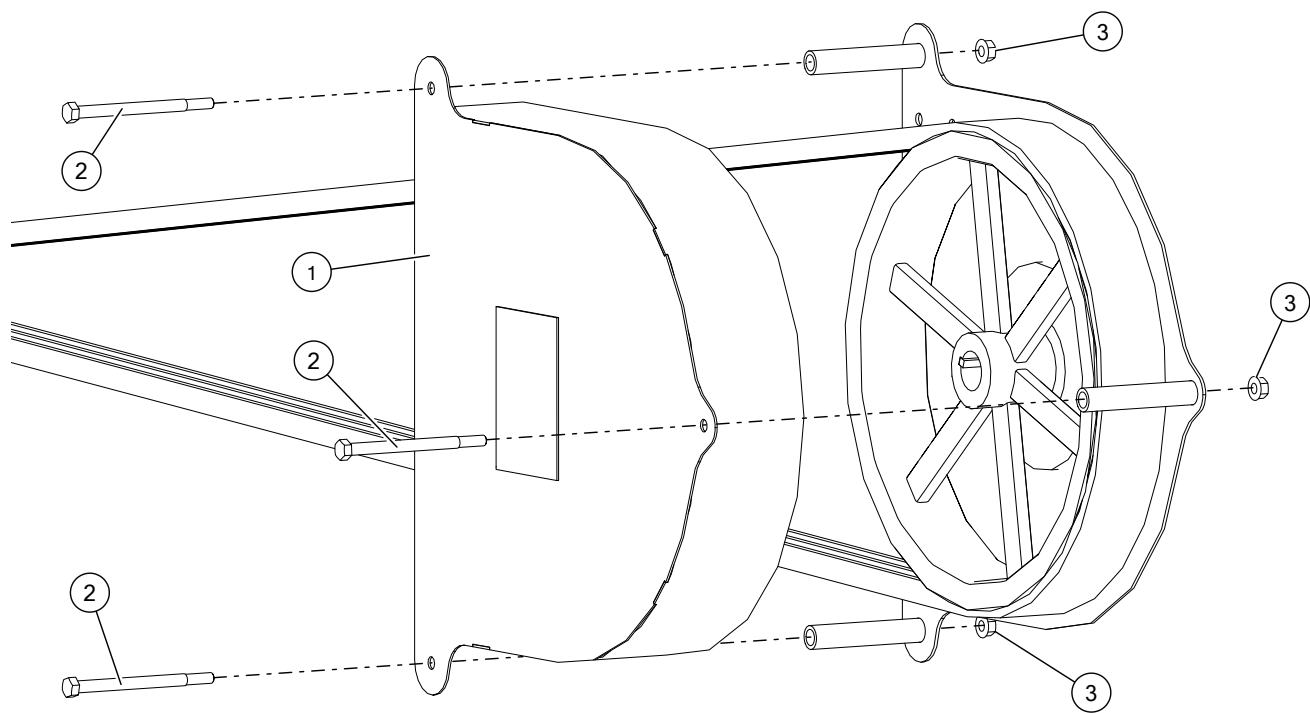
1	manual belt engage guide rod	5	bolt, 1/2" x 1-3/4"
2	motor pulley guard	6	lock nut, 1/2"
3	guard retainer plate	7	bolt, 3/8" x 1"
4	manual belt engage mount bracket	8	lock nut, 3/8"

Installing the Manual Belt Engage Handle Assembly



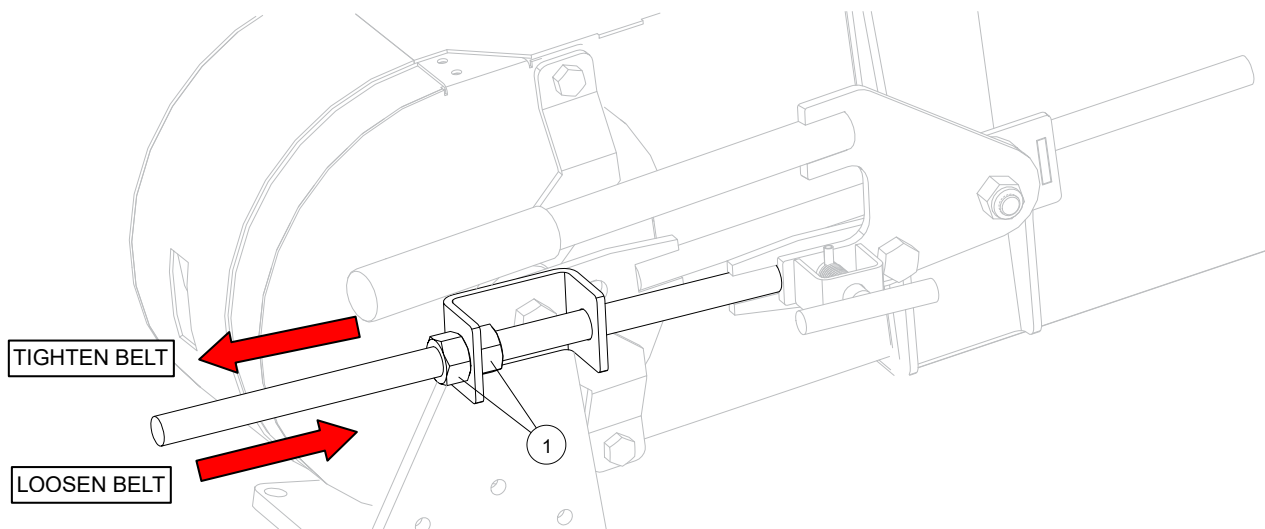
1	manual belt engage threaded rod	5	bolt, 1/2" x 1-1/4"
2	manual belt engage mount bracket	6	lock nut, 1/2"
3	manual belt engage handle assembly	7	hex nut, 5/8"
4	bolt, 1/2" x 1-1/2"		

4.20.6 Install the Gearbox Pulley Cover



1	pulley guard cover	3	whiz nut, 3/8"
2	bolt, 3/8" x 5"		

4.20.7 Tension the Belt

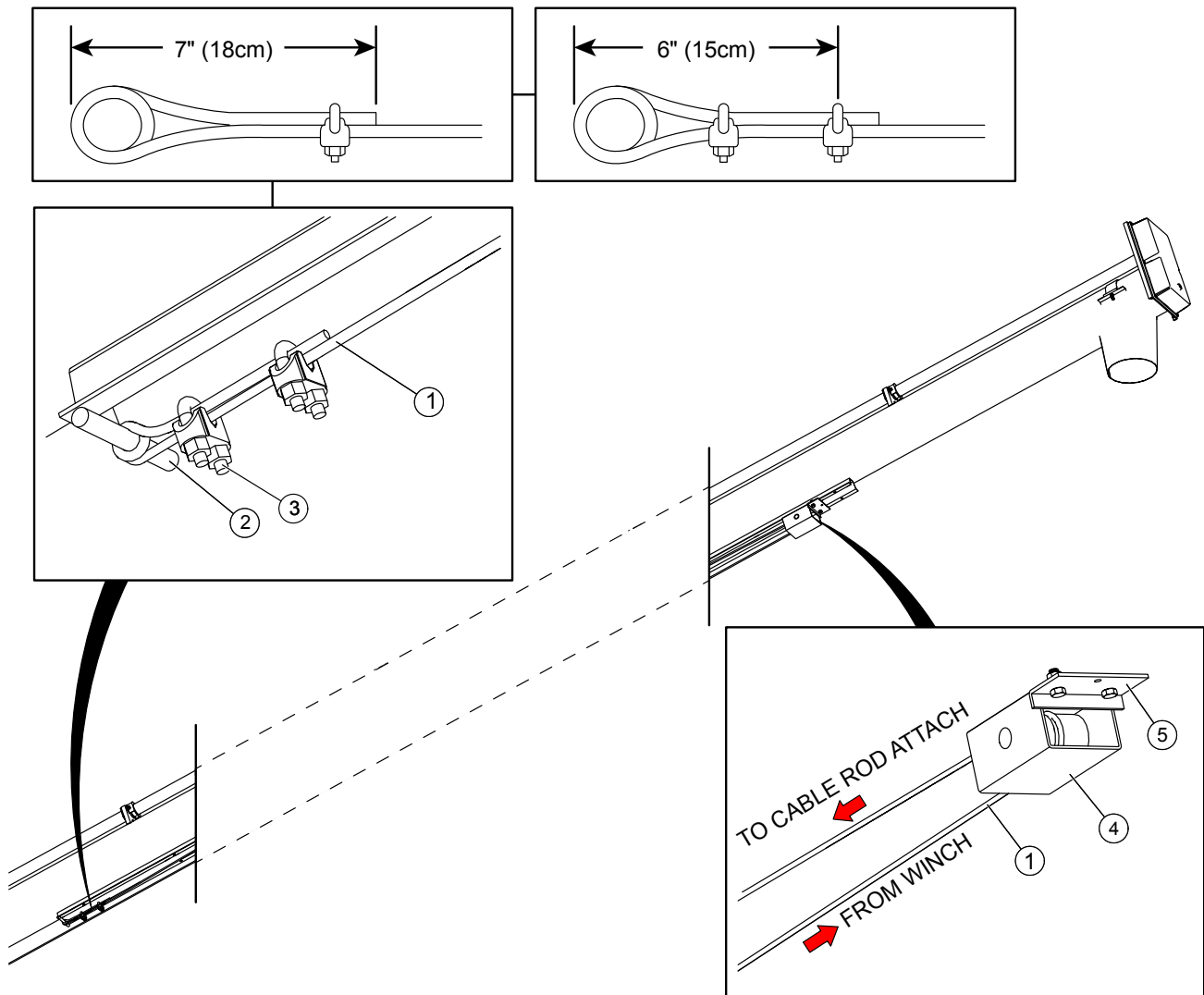
**Assembly Notes:**

- Use the two hex nuts to apply tension to the drive belt prior to closing the guard cover.
- Close the guard using the rubber draw latches after the belt has been tensioned.

1	hex nut, 5/8"
---	---------------

4.21. Install the Lift Cable

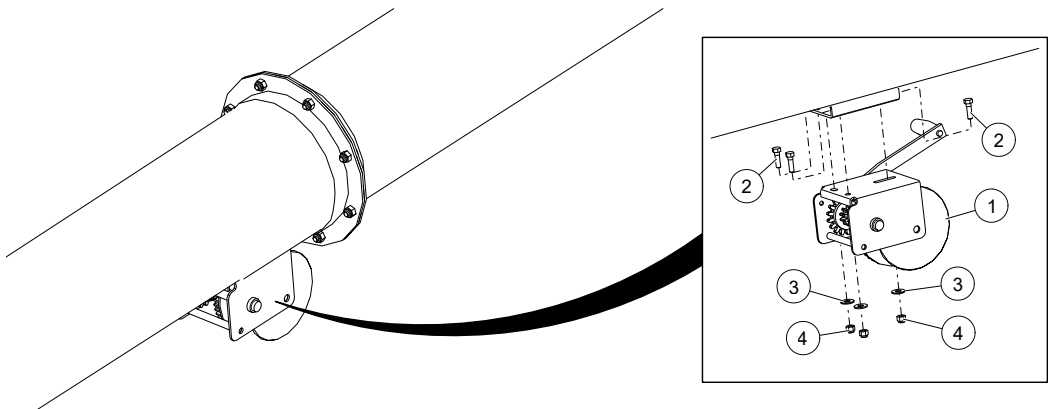
1. Attach the cable to the cable attach rod welded to the bottom of the track by wrapping it around the rod and doubling-back about 7" (18 cm) of cable.
2. Secure the cable in place by installing and tightening two 1/4" cable clamps.
 - a. Apply the first clamp 6" (15.2 cm) from the cable loop with u-bolt over the dead end. Live end rests in clamp saddle. Tighten nuts evenly to recommended torque of 15 ft·lb.
 - b. Apply second clamp as close to loop as possible with the u-bolt over the dead end. Live end rests in clamp saddle. Apply tension and tighten nuts evenly to recommended torque of 15 ft·lb.
3. Run cable between the track stop and the auger tube.
4. Thread the cable over and around the track shoe. Make certain it is properly seated in the cable groove.



1	lift cable	4	track shoe
2	cable attach rod	5	track stop
3	cable clamp		

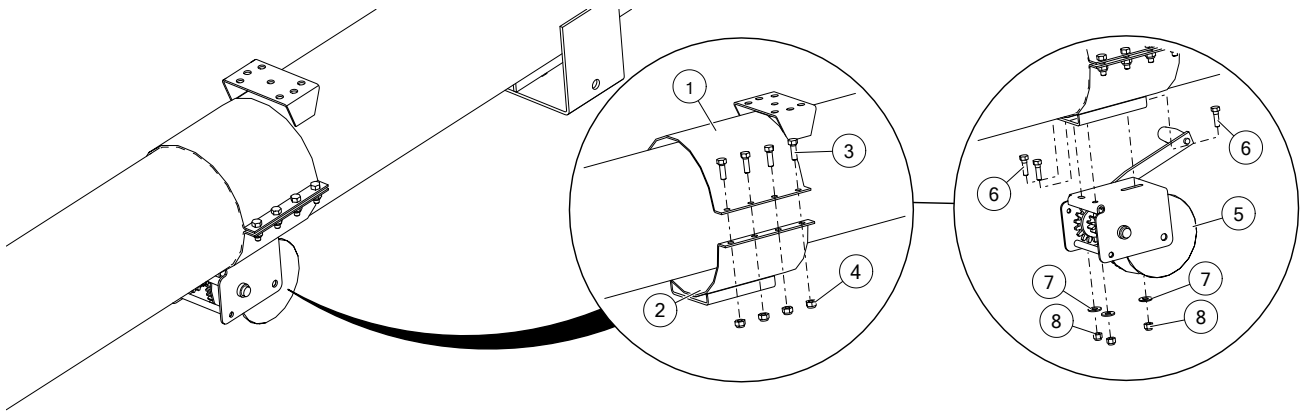
4.22. Install the Manual Winch and Connect the Lift Cable

31' Model



1	manual winch	3	flat washer, 3/8"
2	bolt, 3/8" x 1-1/4"	4	lock nut, 3/8"

36'/41'/46'/51' Models

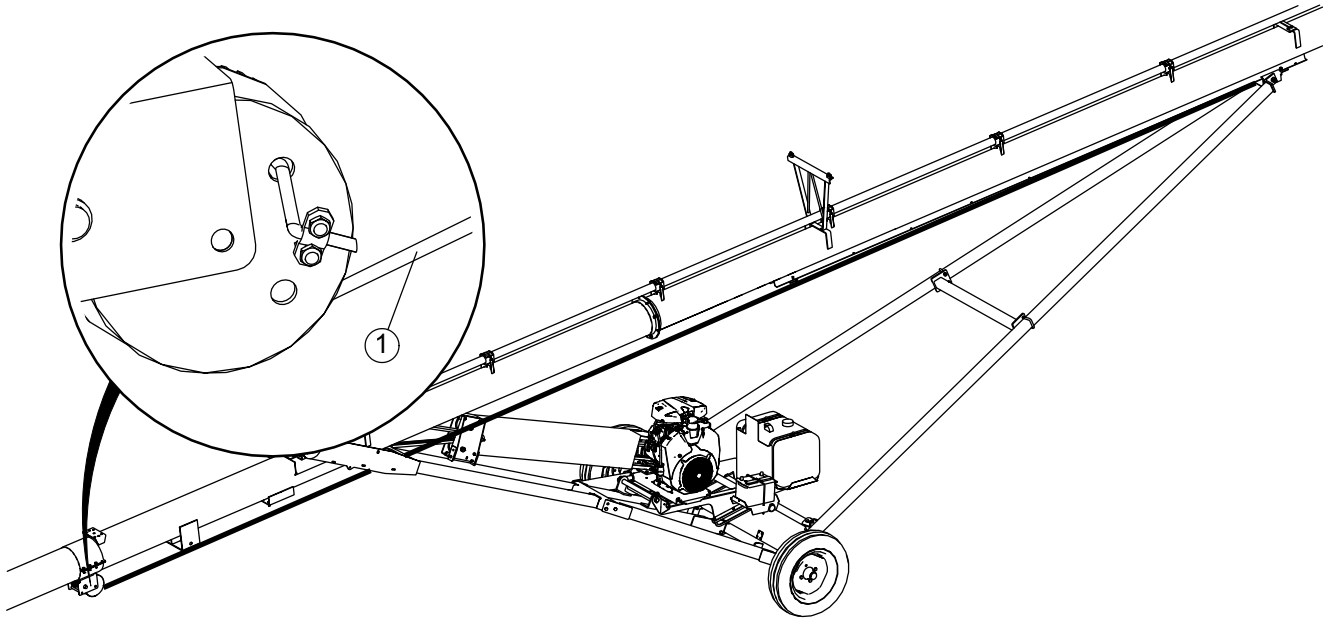


Assembly Note:

- Place the half clamp as close as possible to the detent bracket.

1	half clamp	5	manual winch
2	manual winch tube clamp	6	bolt, 3/8" x 1-1/4"
3	bolt, 7/16" x 1-1/4"	7	flat washer, 3/8"
4	lock nut, 7/16"	8	lock nut, 3/8"

Connect the Lift Cable



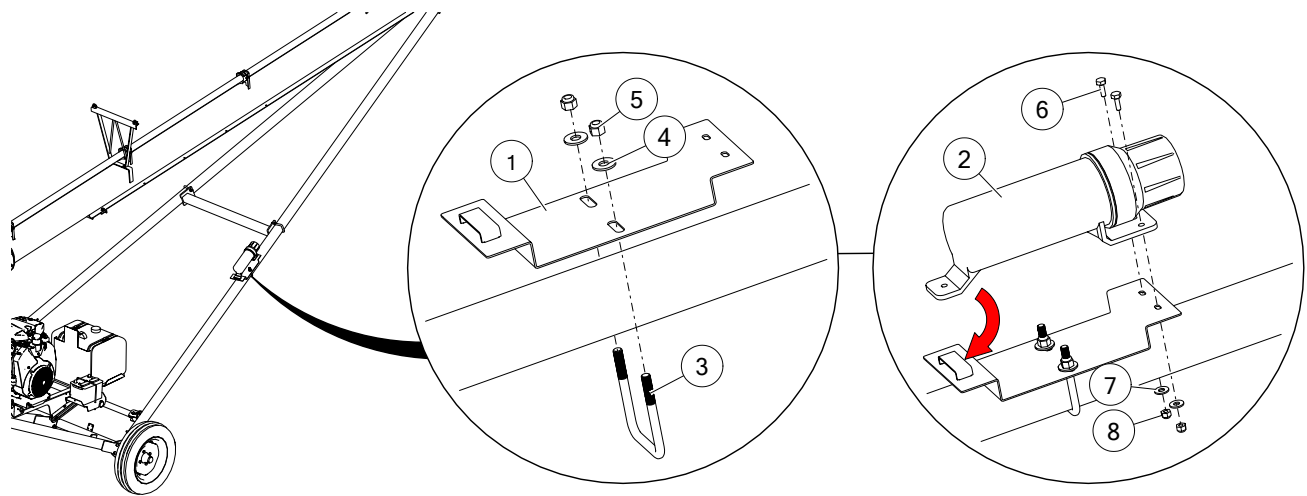
1	winch cable
---	-------------

1. Pull cable to the winch.
2. Wrap the cable over and around the winch drum.
3. Thread the cable through the hole in the side of the winch drum and secure it using a cable clamp.

Important

Make sure there is a minimum of three wraps of cable on the winch drum when the auger is in transport position.

4.23. Install the Manual Holder



1	manual holder mount	5	lock nut, 3/8"
2	manual holder	6	bolt, 1/4" x 3/4"
3	square U-bolt, 3/8" x 2-5/8" x 3-3/4" (31'/36'/41' models)	7	flat washer, 1/4"
	square U-bolt, 3/8" x 3-1/16" x 4" (46'/51' models)	8	lock nut, 1/4"
4	flat washer, 3/8"		

5. Specifications

Specification	8-31	8-36	8-41	8-46	8-51
Tube Size	8" (203 mm)				
CAPACITIES					
Unloading Rate	Up to 3000 Bu/Hr (106 m³/Hr)				
TRANSPORT DIMENSIONS					
Length	32'7" (9.93 m)	37'7" (11.5m)	42'7" (13 m)	47'5" (14.5m)	52'4" (16m)
Width	8' (2.44 m)				
Height	8'9" (2.67 m)	9'3" (2.82 m)	10'2" (3.1 m)	11'3" (3.43 m)	12'3" (3.73 m)
DISCHARGE CLEARANCE DIMENSIONS					
Min	7'9" (2.36 m)	8'2" (2.49 m)	9'1" (2.77 m)	10' (3.05 m)	11' (3.35 m)
Max	17'4" (5.28 m)	20'11" (6.38 m)	23'3" (7.09 m)	26'6" (8.08 m)	29'3" (8.92 m)
TIRES					
Type	15" Radial				
Inflation Pressure	20–24 psi (137–165 kPa)				
WEIGHT					
Hitch Weight (no engine)	63 lb (29 kg)	50 lb (23 kg)	68 lb (31 kg)	85 lb (39 kg)	72 lb (33 kg)
Total Weight	1225* lb (556 kg)	1401* lb (636 kg)	1485* lb (674 kg)	1589* lb (721 kg)	1740* lb (789 kg)
POWER RECOMMENDATIONS					
Gas Engine	16–18 HP	18–20 HP	22–25 HP	25–27 HP	27–30 HP
PART SPECIFICATIONS					
Gas Tank Capacity	12 Imp Gal (45 L)				
Gearbox Oil Capacity	0.9 US Quarts (0.85 L)				
Upper Drive Housing Grease Quantity	750 g (26 oz)				
Belt Size	2B180	2B210	2B240	2B270	2B300
Mover Kit Hydraulic Oil	ISO 32 Hydraulic Oil				
Hydraulic Hoses	Minimum 2500 psi (17200 kPa) working pressure				

* Weights are estimated.

Specification	10-31	10-36	10-41	10-46	10-51
Tube Size	10" (254 mm)				
CAPACITIES					
Unloading Rate	Up to 6000 Bu/Hr (212 m³/Hr)				
TRANSPORT DIMENSIONS					
Length	32'7" (9.93 m)	37'7" (11.5 m)	42'7" (13 m)	47'5" (14.5 m)	52'4" (16 m)
Width	8' (2.44 m)				
Height	8'9" (2.67 m)	9'3" (2.82 m)	10'2" (3.1 m)	11'3" (3.43 m)	12'3" (3.73 m)
DISCHARGE CLEARANCE DIMENSIONS					
Min	7'6" (2.29 m)	7'10" (2.39 m)	8'9" (2.67 m)	9'10" (3 m)	10'9" (3.28 m)
Max	17' (5.18 m)	19'11" (6.07 m)	22'11" (6.98 m)	26' (7.92 m)	28'10" (8.79 m)
TIRES					
Type	15" Radial				
Inflation Pressure	20–24 psi (137–165 kPa)				
WEIGHT					
Hitch Weight (no engine)	88* lb (40 kg)	82 lb (37 kg)	100* lb (45 kg)	135* lb (61 kg)	120* lb (54 kg)
Total Weight	1374* lb (623 kg)	1548* lb (702 kg)	1663* lb (754 kg)	1896* lb (860 kg)	2314* lb (1050 kg)
POWER RECOMMENDATIONS					
Gas Engine	27–30 HP	30–35 HP	35–38 HP	38 HP	38 HP
PART SPECIFICATIONS					
Gas Tank Capacity	12 Imp Gal (45 L)				
Gearbox Oil Capacity	0.9 US Quarts (0.85 L)				
Upper Drive Housing Grease Quantity	1100 g (40 oz)				
Belt Size	2B180	2B210	2B240	3B270	3B300
Mover Kit Hydraulic Oil	ISO 32 Hydraulic Oil				
Hydraulic Hoses	Minimum 2500 psi (17200 kPa) working pressure				

* Weights are estimated.

6. AGI Limited Warranty

This warranty relates to AGI Augers (the “Product”) sold by AGI, (referred to herein as the “Seller”) and applies only to the first user of the Product (meaning a purchaser directly from the Seller or from an authorized dealer or distributor of the Product, referred to herein as the “Buyer”).

This warranty shall only be effective if properly registered with the Seller in accordance with information provided to the Buyer at the time of sale.

1. The Seller warrants to the Buyer that the Product is free from defects in material and workmanship **under normal and reasonable use.**
2. This warranty applies only to defects in materials and workmanship and not to damage incurred in shipping or handling, through normal wear and tear, or damage due to causes beyond the control of the Seller such as lightning, fire, flood, wind, earthquake, excessive voltage, mechanical shock, water damage, or damage arising out of abuse, alteration, improper assembly, improper installation, improper maintenance or improper repair of the Product.
3. **The warranty period for the Product shall be two years from delivery of the Product to the Buyer where the Product is used in a normal farm operation. First year of warranty coverage of parts and labour, second year warranty coverage of parts only. Warranty period for the Product shall be 90 days from delivery of the Product to the Buyer where the Product is used in a commercial operation.** In the event that any part incorporated into the Product is manufactured and sold to the Seller by a third party vendor, such part is only warranted to the extent of the warranty given by that third party.
4. The obligations set forth in this warranty are conditional upon the Buyer promptly notifying the Seller of any defect and completing reasonably required documentation and, if required, promptly making the Product available for correction. The Seller shall be given reasonable opportunity to investigate all claims and no Product shall be returned to the Seller or part disposed of until after inspection and approval by the Seller and receipt by the Buyer of written shipping instructions, with transportation charges prepaid.
5. Upon return of the Product, or such part of the Product that requires correction, the Seller shall, at the Seller’s option, either repair or replace the Product or such part. The Seller shall replace or attempt to repair and return the Product or such part within a reasonable period of time from receipt of an approved warranty claim from the Buyer. If the Seller is unable to repair or replace the Product, the Buyer shall be entitled to a credit note in the amount of the purchase price for the Product.
6. The total liability of the Seller on any claim, whether in contract, tort or otherwise, arising out of, connected with, or resulting from the manufacture, sale, delivery, repair, replacement or use of the Product or any part thereof **shall not exceed the price paid for the Product** and the Seller shall not be liable for any special indirect, incidental or consequential damages caused by reason of the installation, modification, use, repair, maintenance or mechanical failure of the Product. **Consequential or special damages as used herein include, but are not limited to, lost or damaged products or goods, costs of transportation, lost sales, lost orders, lost income, increased overhead, labor and incidental costs and operational inefficiencies.**
7. **Notwithstanding anything contained herein to the contrary, the foregoing is the Buyer’s sole and exclusive remedy for breach of warranty by the Seller in respect of the Product. The Seller, for itself, its agents, contractors, employees and for any parent or subsidiary of the Seller, expressly disclaims all warranties, either express or implied, written or oral, including implied warranties of merchantability or fitness for a particular purpose and undertakes no obligation with respect to the conformity of the Product except as set out in the purchase agreement, if any, or marketing materials.**
8. The foregoing warranty is the entire warranty of the Seller to the Buyer and the Buyer shall not be entitled to rely upon any representation or warranty contained in any marketing material of the Seller in respect of the Product. The Seller neither assumes, nor authorizes any other person purporting to act on its behalf to modify or to change this warranty, nor to assume for it any other warranty or liability concerning the Product.






WARRANTY VOID IF NOT REGISTERED

AGI is a leading provider of equipment solutions for agriculture bulk commodities including seed, fertilizer, grain, and feed systems with a growing platform in providing equipment and solutions for food processing facilities. AGI has manufacturing facilities in Canada, the United States, the United Kingdom, Brazil, South Africa, India and Italy and distributes its products globally.



P.O. Box 39, Rosenort, Manitoba, R0G 1W0 Canada

P 866.467.7207 (Canada & USA) or 204.746.2396 | **F** 866.768.4852 | **E** sales@grainaugers.com

AGGROWTH.COM [aggrowthintl](https://www.youtube.com/aggrowthintl)     

©Ag Growth International Inc. 2025 | Printed in Canada

If you have any comments or questions on this manual, or find an error, email us at comments@aggrowth.com.
Please include the part number listed on the cover page in your message.