



A262

Speed Reducer Kit

Portable Grain Auger

Installation Instructions

This manual applies to:

AGI Westfield MKX², X², MKX, X 13 Series

AGI X², X 13 Series

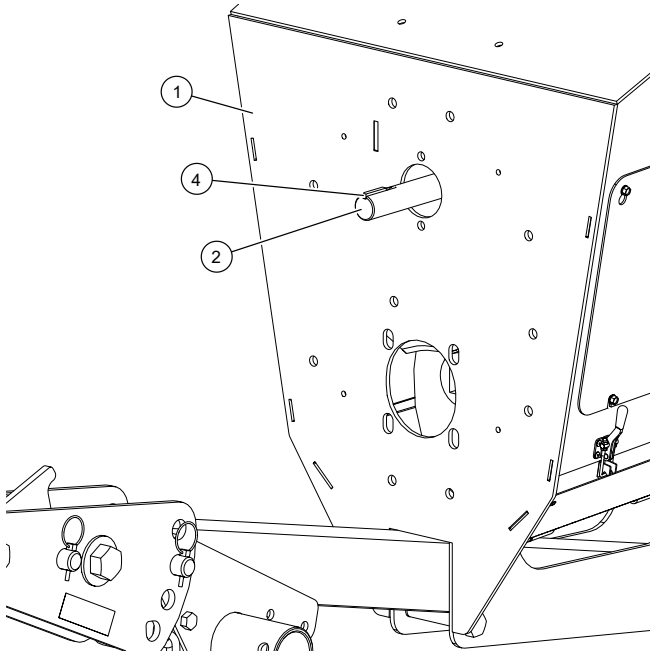
AGI Hutchinson HX², HX 13 Series

AGI Mayrath HX², HX 13 Series

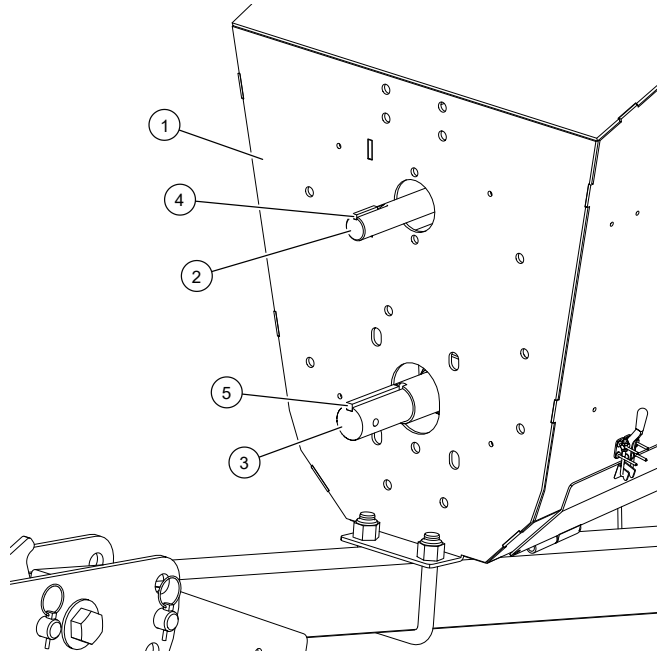
Pre-Installation Instructions

1. Park the auger on level ground. Fully lower the auger.
2. Chock the auger wheels to prevent rolling.
3. Relieve pressure in the hydraulic hose(s) and disconnect them from the tractor.
4. Lower the swing hopper fully to the ground.
5. Use the jack to support the boot, then disconnect the tractor from the auger (PTO shaft and hitch).
6. Remove the following parts from the boot face:
 - sprocket guard
 - PTO driveline
 - PTO bracket
 - drive chain
 - sprockets
 - bearings
 - **MKX/X/HX models only:** bearing washer
 - **MKX²/X²/HX² models only:** hose holder

MKX²/X²/HX² Models



MKX/X/HX Models



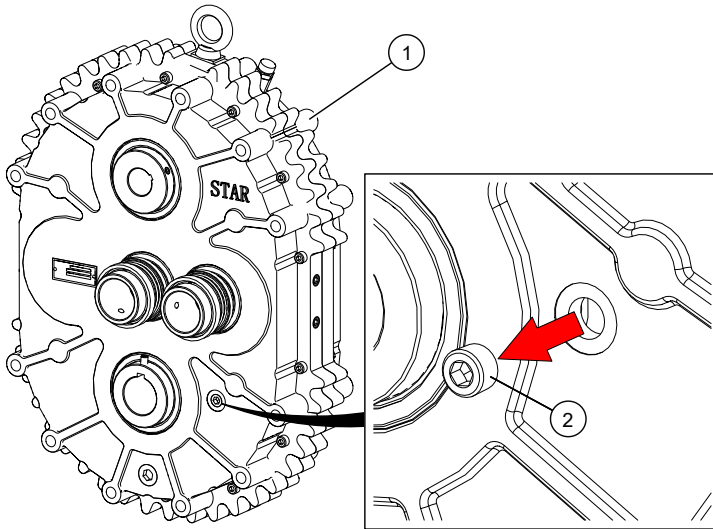
Assembly Notes:

- Do not remove the square keys from the flight shaft or gearbox shaft.
- Make sure that all parts have been removed from the boot face.

1	boot face	4	square key, 1/4"
2	gearbox shaft	5	square key, 3/8"
3	flight shaft		

Checking the Gearbox Oil Level

1. Remove the oil filler plug from the gearbox.
2. Check the oil level to make certain the gearbox is 1/4 full (up to the filler plug).
3. Add oil if necessary.
4. Re-install the oil filler plug.



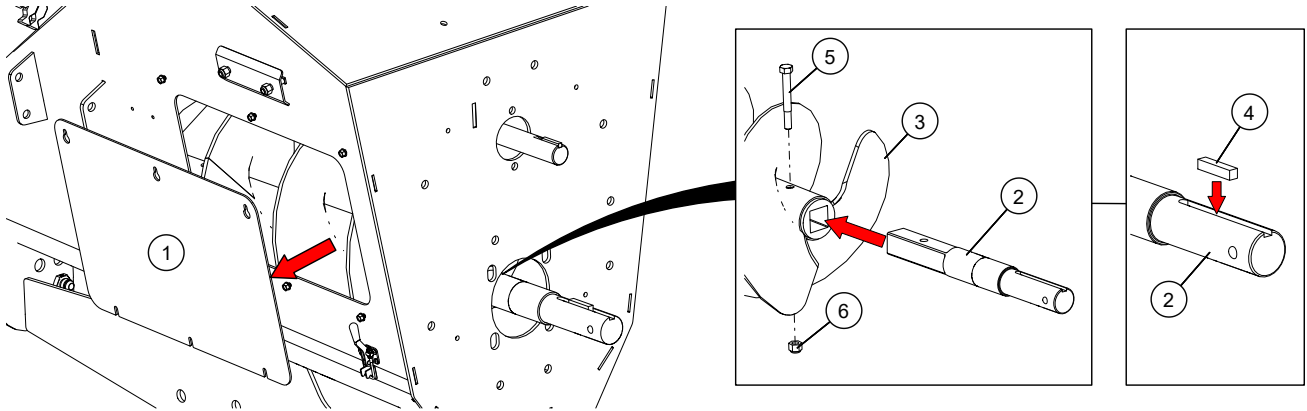
Assembly Notes:

- The gearbox has been filled at the factory (1/4 full) with 75W90 synthetic oil (or equivalent).
- The gearbox must be upright and level when checking or adding oil.
- Do not overfill.
- Do not use grease.

1	gearbox
2	oil filler plug

Installing the Flight Shaft

This section applies to MKX², X², and HX² models.



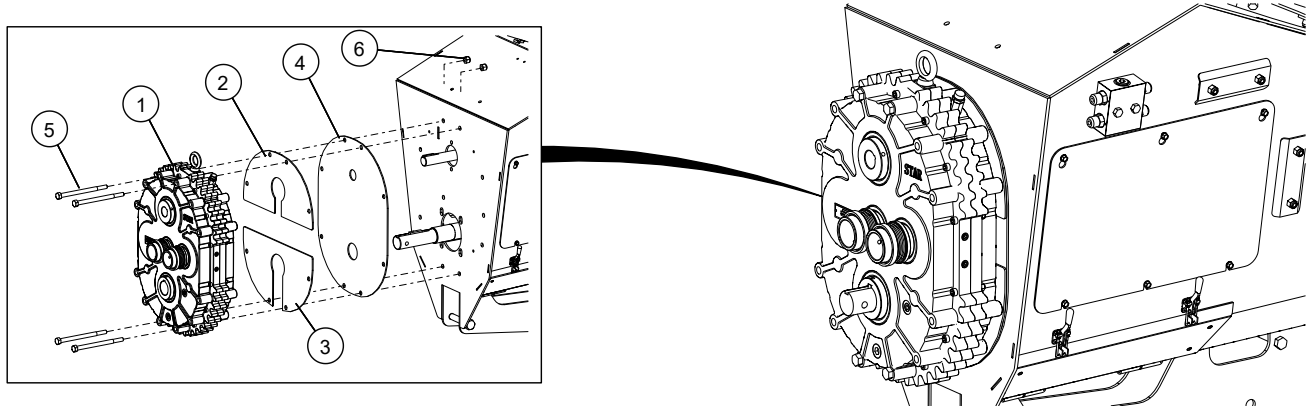
Assembly Note:

- Use the existing bolt and lock nut.

1	boot side panel	4	square key, 3/8" x 1-3/4"
2	shaft	5	bolt, 1/2" x 4"
3	boot flight	6	lock nut, 1/2"

Installing the Speed Reducer Gearbox

Install the Gearbox

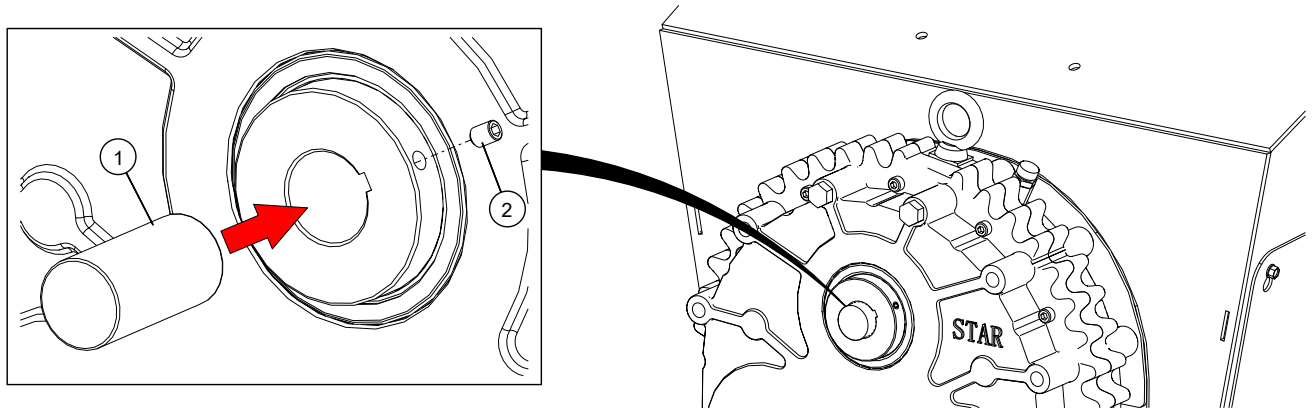


Assembly Notes:

- Make sure that the square keys are installed correctly.
- Rotate shafts so that the square keys align with the gearbox keyways.
- Make sure that the speed reducer gearbox is seated tight against the boot.

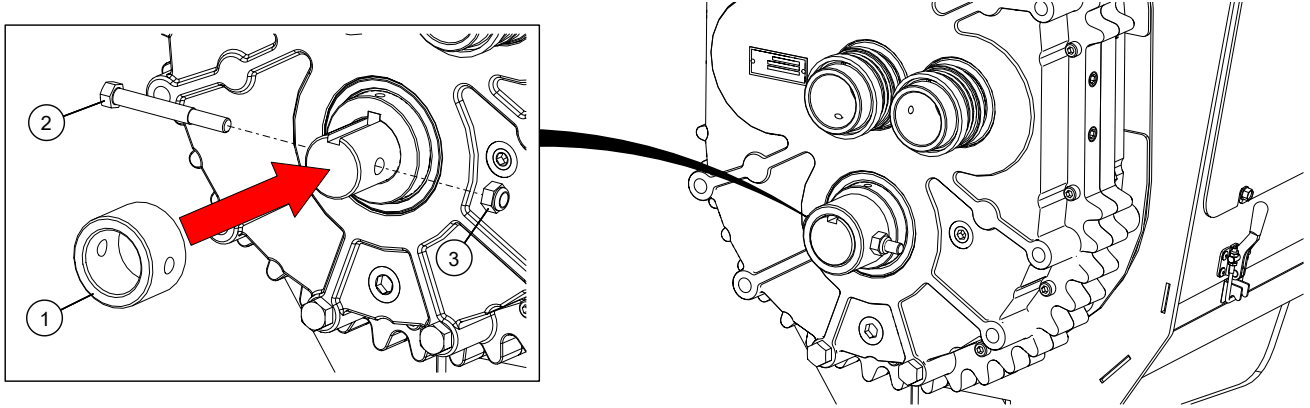
1	speed reducer gearbox	4	seal plate
2	spacer plate, top	5	bolt, 1/2" x 7"
3	spacer plate, bottom	6	lock nut, 1/2"

Install the Top Plug Shaft



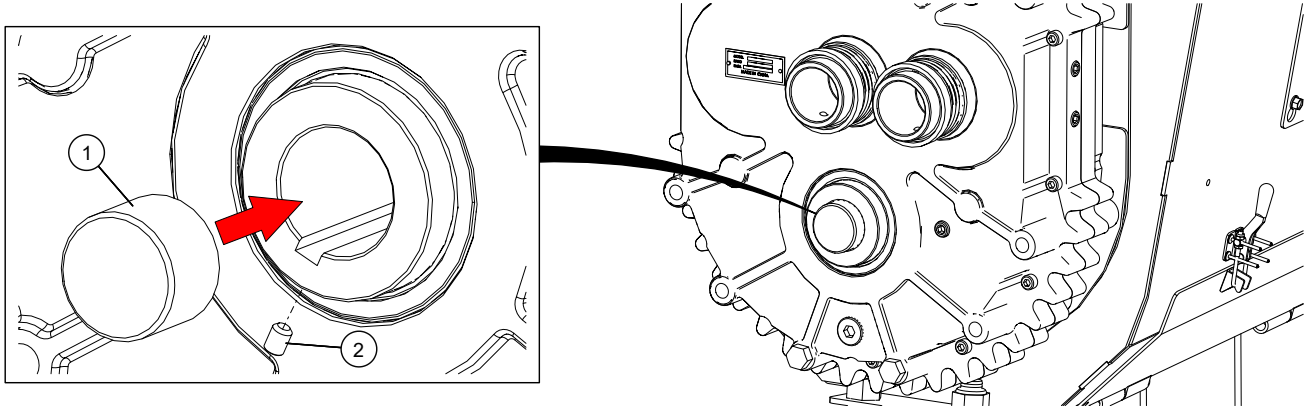
1	top plug shaft, 1-1/4"	2	set screw, 5/16" x 3/8"
---	------------------------	---	-------------------------

Install the Lower Flight Stop (MKX²/X²/HX² Models)



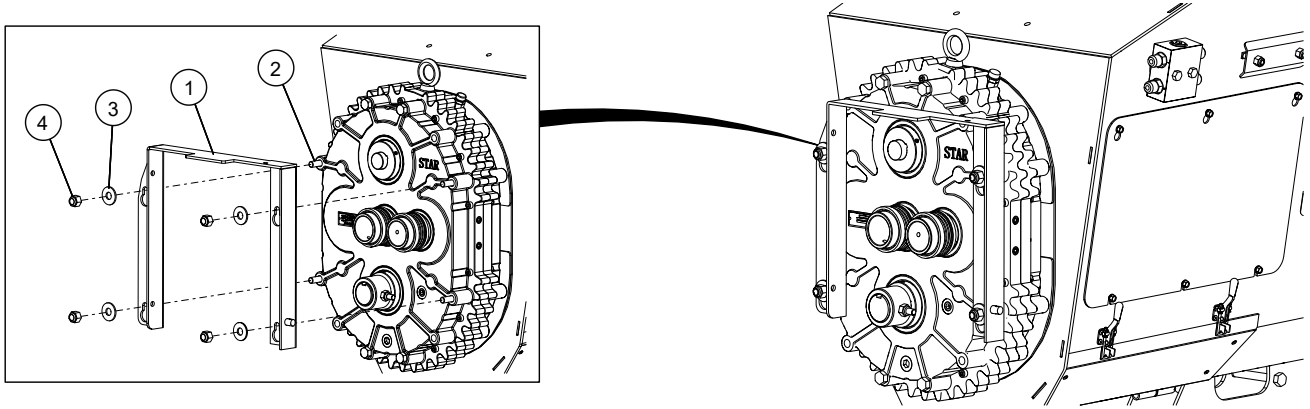
1	lower flight stop	3	lock nut, 7/16"
2	bolt, 7/16" x 3-1/2"		

Install the Bottom Plug Shaft (MKX/X/HX Models)



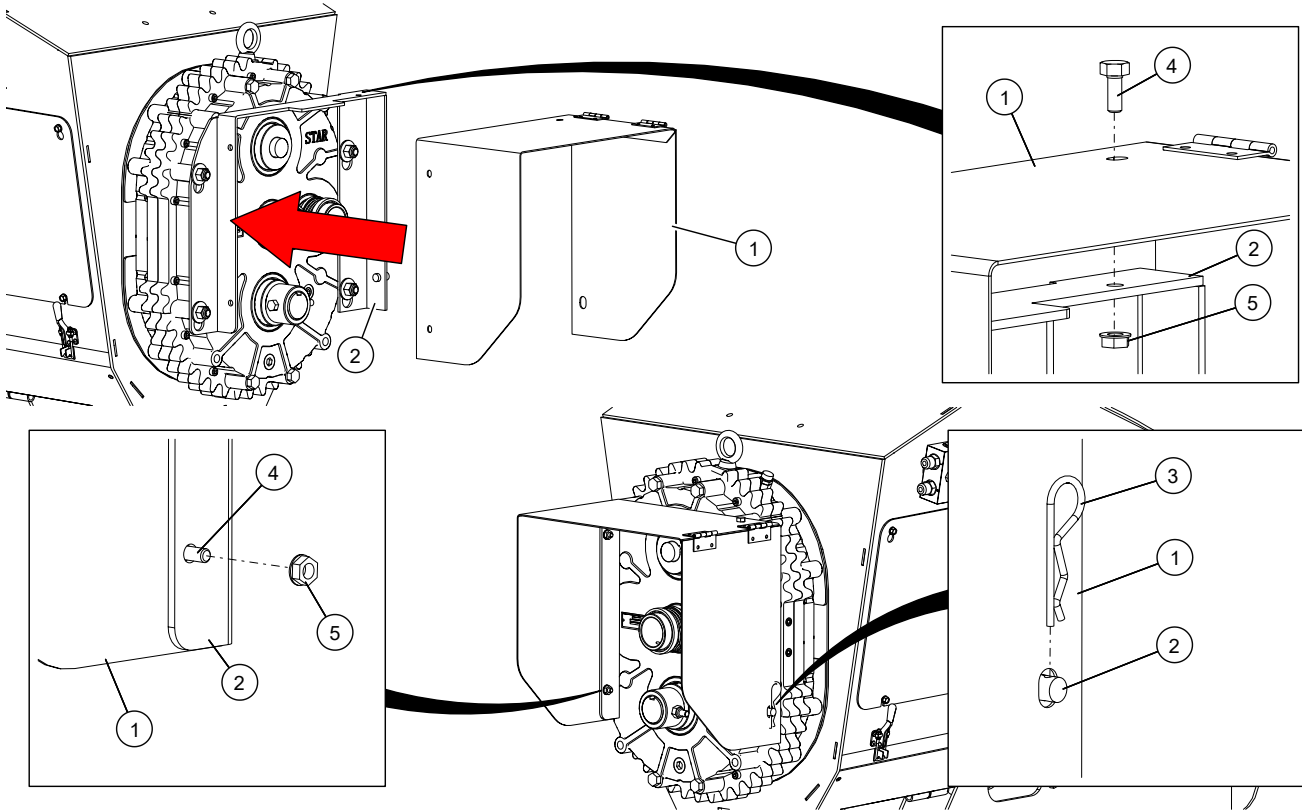
1	bottom plug shaft, 1-3/4"	2	set screw, 5/16" x 3/8"
---	---------------------------	---	-------------------------

Install the Shield Bracket



1	shield bracket	3	flat washer, 1/2"
2	bolt, 1/2" x 7"	4	lock nut, 1/2"

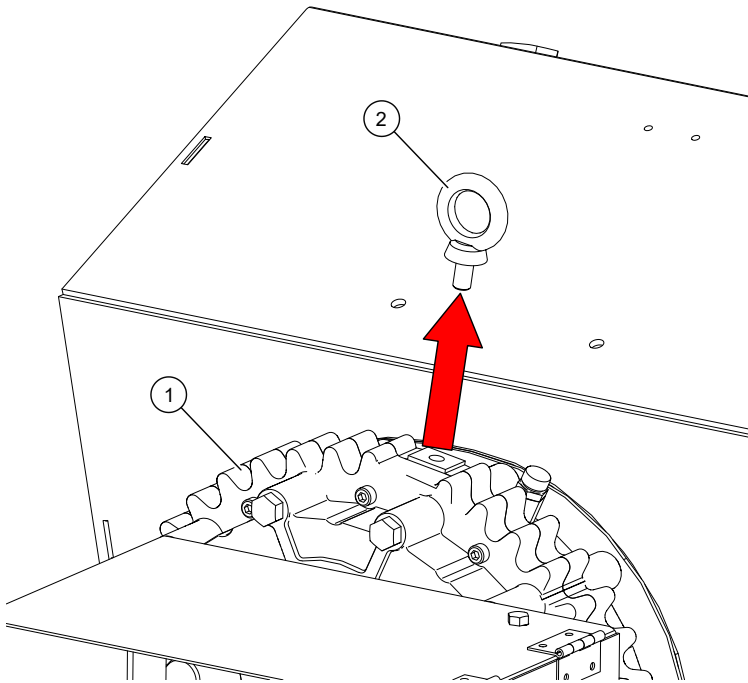
Install the PTO Shield



1	PTO shield	4	bolt, 5/16" x 3/4"
2	shield bracket	5	flange lock nut, 5/16"
3	hair pin		

Remove the Swinging Bolt

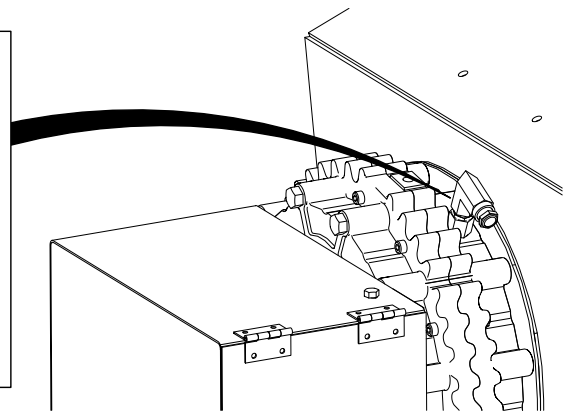
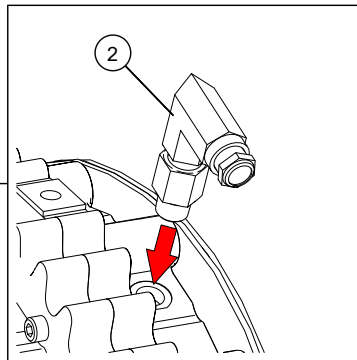
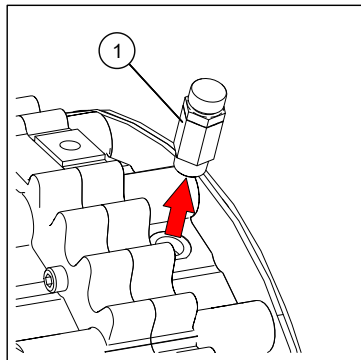
1	gearbox
2	swinging bolt



Install the Hydraulic Breather Plug

NOTICE

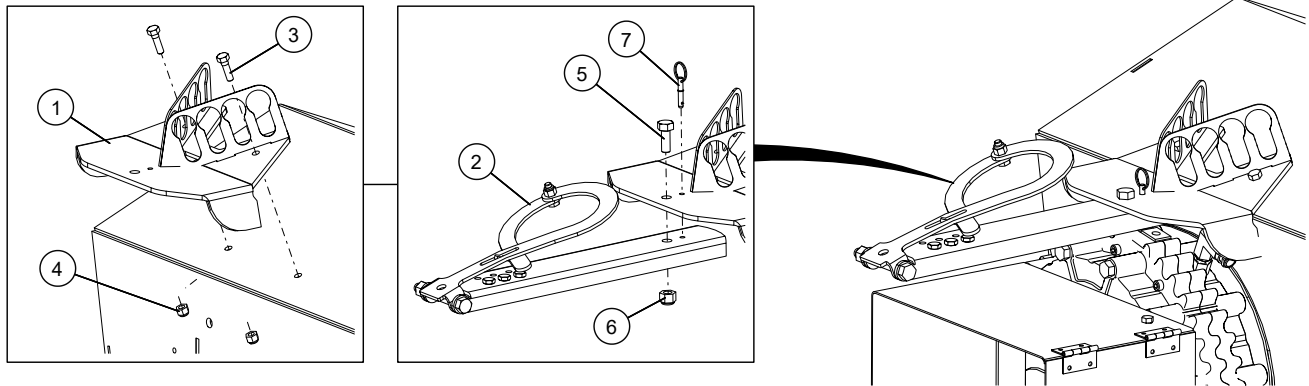
Ensure the hydraulic breather plug is installed, or excessive internal air pressure may cause damage to the gearbox during operation.



1	gearbox plug	2	hydraulic breather plug
---	--------------	---	-------------------------

Installing the PTO Holder

MKX²/X²/HX² Models

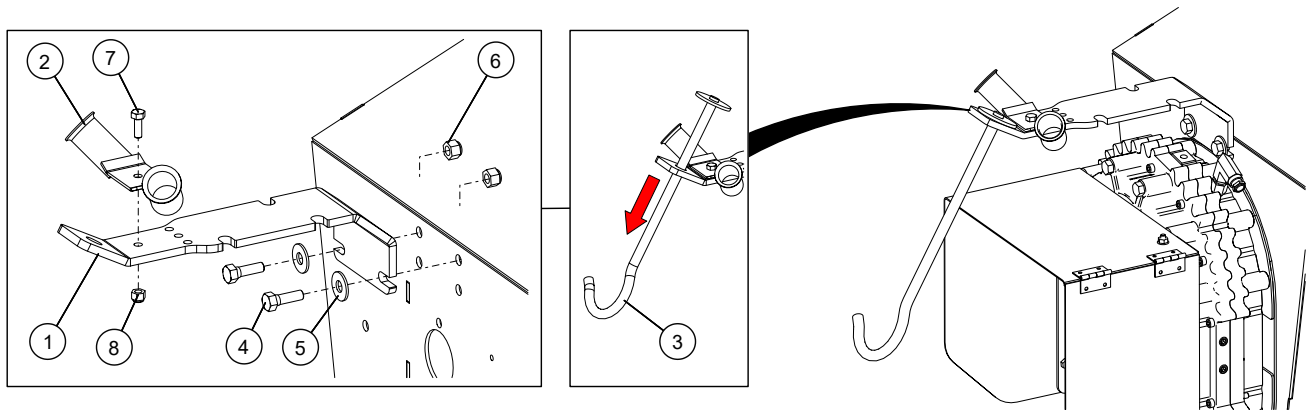


Assembly Note:

- Re-install the hose holder using the existing bolt and lock nut.

1	hose holder	5	bolt, 1/2" x 1-1/4"
2	PTO holder assembly, short	6	lock nut, 1/2"
3	bolt, 3/8" x 1-1/4"	7	detent pin, 1/4" x 5/8"
4	lock nut, 3/8"		

MKX/X/HX Models

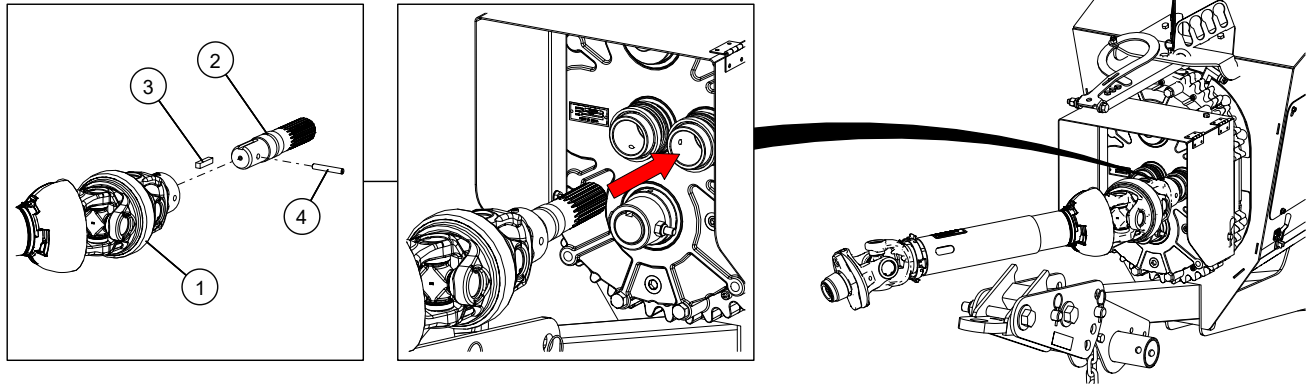


Assembly Note:

- Slide the existing transport saddle through the PTO bracket.

1	PTO bracket	5	flat washer, 1/2"
2	double hose holder	6	lock nut, 1/2"
3	transport saddle	7	bolt, 3/8" x 1"
4	bolt, 1/2" x 1-1/2"	8	lock nut, 3/8"

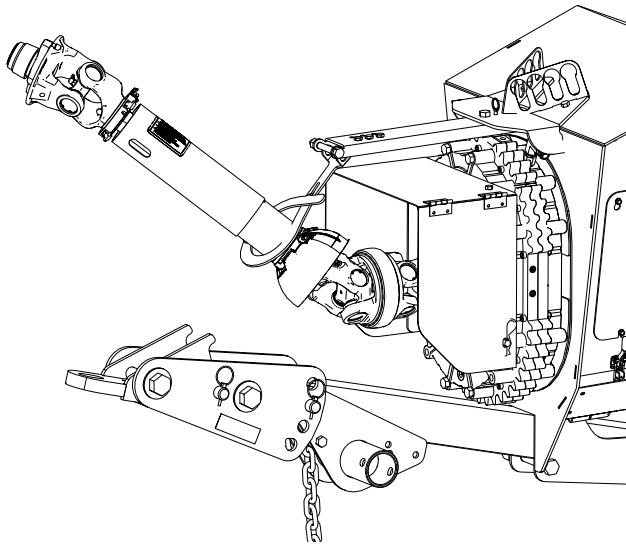
Installing the PTO Driveline



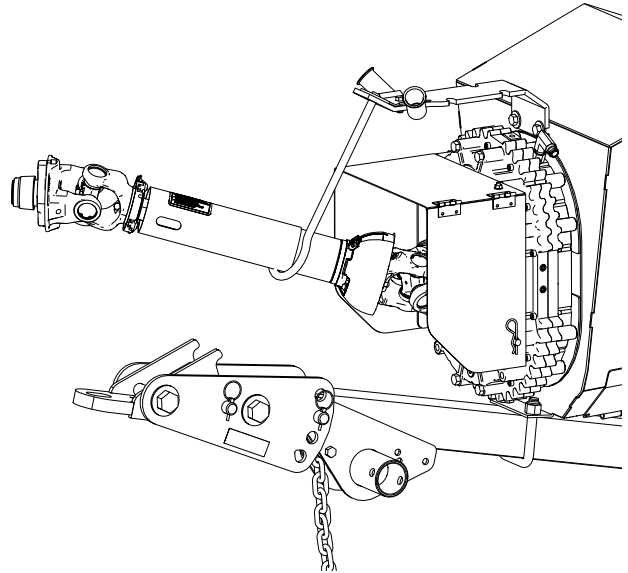
1	PTO driveline	3	square key, 3/8" x 1-3/4"
2	splined stub shaft	4	roll pin, 3/8" x 2-1/2"

PTO in Transport Position

MKX²/X²/HX² Models



MKX/X/HX Models

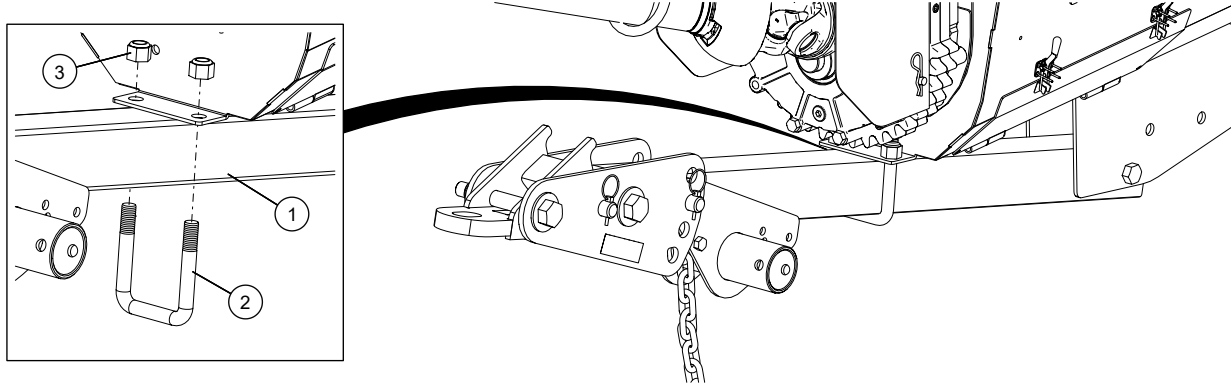


Adjusting the Tow Bar

Important

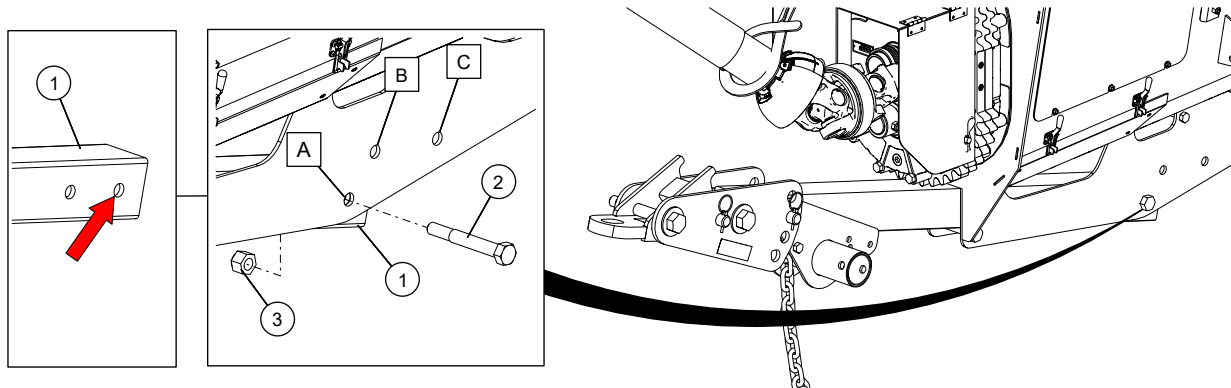
Support the boot securely before adjusting the tow bar.

Loosen the Tow Bar U-Bolt (MKX/X/HX Models)



1	tow bar	3	lock nut, 3/4"
2	u-bolt, 3/4" x 3-1/2" x 5"		

Adjust the Tow Bar



Assembly Notes:

- Adjust the tow bar to the appropriate location and attach using the existing bolt and lock nut.
- **MKX/X/HX Models Only:** Tighten the tow bar u-bolt.

1	tow bar	A	reducer/reverser
2	bolt, 3/4" x 5-1/2"	B	reverser
3	lock nut, 3/4"	C	regular

AGI is a leading provider of equipment solutions for agriculture bulk commodities including seed, fertilizer, grain, and feed systems with a growing platform in providing equipment and solutions for food processing facilities. AGI has manufacturing facilities in Canada, the United States, the United Kingdom, Brazil, South Africa, India and Italy and distributes its products globally.



P.O. Box 39, Rosenort, Manitoba, R0G 1W0 Canada
 P 866.467.7207 (Canada & USA) or 204.746.2396 | F 866.768.4852 | E sales@grainaugers.com

AGGROWTH.COM agrowthintl
 ©Ag Growth International Inc. 2023 | Printed in Canada