



A414

Electric Clutch Kit

Triple-Groove Pulley

Installation Instructions

This manual applies to:

AGI Westfield STX2 10 Series (46/51/61)

AGI XTA 10 Series (46/51/61)

Install the Electric Clutch

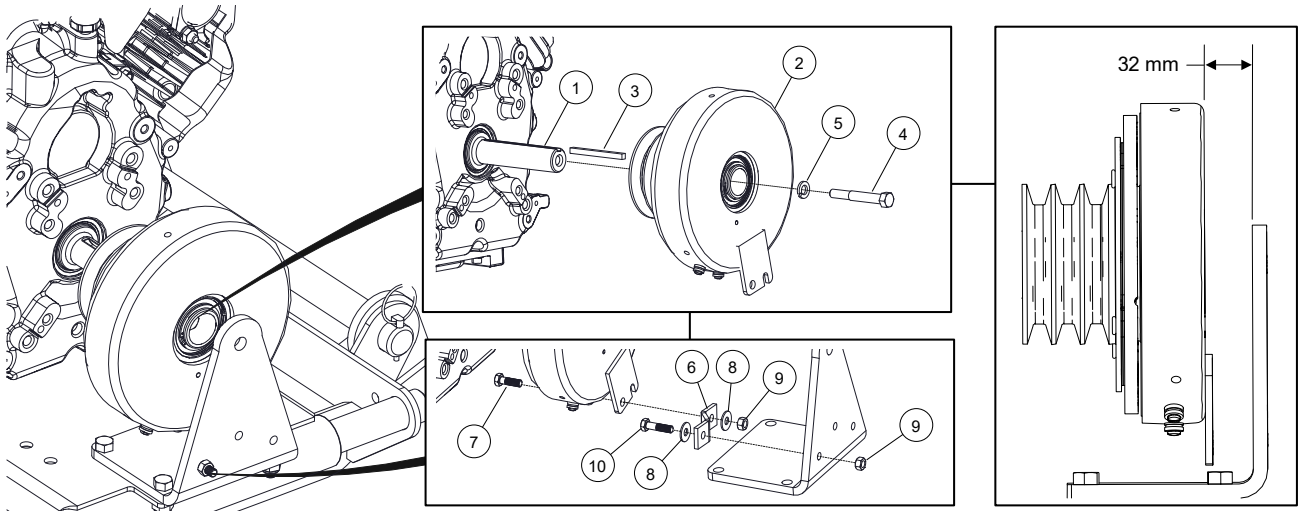
1. Apply anti-seize to the engine shaft where the electric clutch will slide on.
2. Slide the square shaft key and electric clutch onto the engine shaft.
3. Secure the electric clutch to the engine shaft using a 7/16" x 3" bolt and lock washer.

Note

When properly installed, the electric clutch should be tight and unable to slide on the shaft.

4. Install the engine so that the gap between the face of the electric clutch and the inside face of the guard attach bracket is 32 mm.
5. Connect all belts.
6. Attach the clutch stop to the electric clutch using one M8 x 25 bolt, flat washer, and lock nut.
7. Attach the clutch stop to the guard attach bracket using one M8 x 30 bolt, flat washer, and lock nut.

Figure 1. Installing the Electric Clutch



1	engine shaft	6	clutch stop
2	electric clutch	7	bolt, M8 x 25
3	square shaft key	8	flat washer, M8
4	bolt, 7/16" x 3"	9	lock nut, M8
5	lock washer, 7/16"	10	bolt, M8 x 30

Wire the Electric Clutch

➡ If wiring to an electronic throttle control harness, use the pig tail included in the electronic throttle control kit.

Figure 2. Electronic Throttle Control Pig Tail



➡ If not wiring to an electronic throttle control harness, follow the steps listed below.

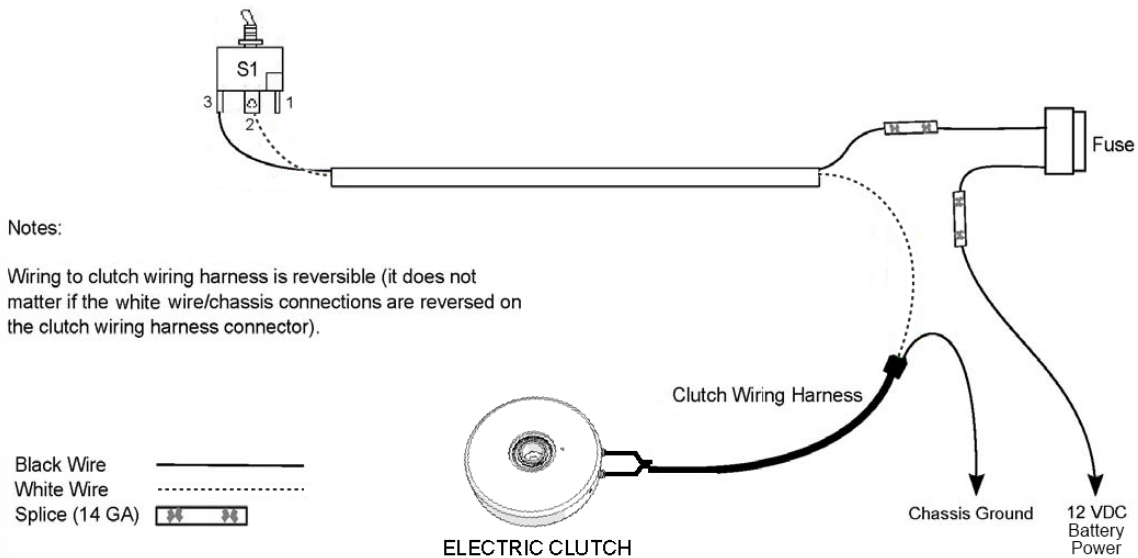
1. Remove (cut off) the clutch harness connector that includes a connection clip on one side.
2. Prepare the cut end for connection by trimming harness jacket and wire insulation as needed, crimp ring terminals to the two wires on that end, and connect them to the screw terminals on the clutch (it does not matter which wire connects to which terminal).
3. Complete the remaining electrical connections, using 14 gauge crimp connectors (splice, spade, and ring terminal) as needed:
 - connect the white switch cable wire to one of the clutch harness connector terminals;
 - connect the black switch cable wire to the fuse, and from there to 12 VDC battery power;
 - connect the remaining clutch harness connector terminal to ground.
4. Test the switch to ensure that the electric clutch engages and disengages properly.
5. Use electrical tape to seal and secure any electrical connections that might require weather-proofing.
6. Run the electrical cable through the lower frame to prevent accidental disconnection of wiring if the cable is pulled tight.



Note

Secure the cable when not in use.

Figure 3. Electric Clutch Wiring Diagram



Milltec is an AGI Brand.

AGI is a leading provider of equipment solutions for agriculture bulk commodities including seed, fertilizer, grain, and feed systems with a growing platform in providing equipment and solutions for food processing facilities. AGI has manufacturing facilities in Canada, the United States, the United Kingdom, Brazil, South Africa, India and Italy and distributes its products globally.



51-A, 1st Phase, KIADB Industrial Area, Bommasandra Bangalore-560099, India
 P +91.80.27831128 | F +91.80.27831129 | E milltec@milltecmachinery.com

AGGROWTH.COM agrowthintl [Social Media Icons]
 ©Ag Growth International Inc. 2025 | Printed in India