



# A263

## Reverser Kit

### Portable Grain Auger Installation Instructions

This manual applies to:

AGI Westfield MKX<sup>2</sup>, X<sup>2</sup>, MKX, X 13 Series

AGI X<sup>2</sup>, X 13 Series

AGI Hutchinson HX<sup>2</sup>, HX 13 Series

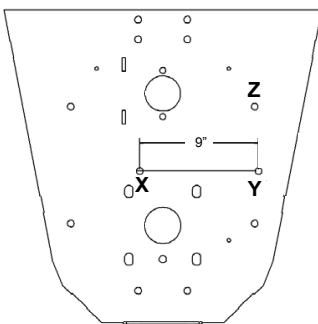
AGI Mayrath HX<sup>2</sup>, HX 13 Series

#### Pre-Installation Instructions

1. Park the auger on level ground. Fully lower the auger.
2. Chock the auger wheels to prevent rolling.
3. Relieve pressure in the hydraulic hose(s) and disconnect them from the tractor.
4. Lower the swing hopper fully to the ground.
5. Use the jack to support the boot, then disconnect the tractor from the auger.
6. Remove the sprocket shield from the boot.
7. Remove the PTO driveline from the auger.
8. Remove the drive chain from the front of the boot.
9. **MKX/X/HX 13 Models only.** Remove the PTO bracket from the boot.

#### Reverser Kit Installation

1. Locate hole "X", hole "Y" and hole "Z". Knock the steel plugs out of these holes using a punch and hammer.



2. Install the reverser base assembly with three 1/2" x 1-1/4" bolts, flat washers and locknuts. Do not tighten until step 5.
3. Install the half-link on roller chain and place chain over upper and lower sprockets, passing it through the reverser base.
4. Join the two ends of the chain together using the half link and the connector link.
5. Push the reverser base against the chain as tight as possible and tighten the three 1/2" x 1-1/4" bolts.

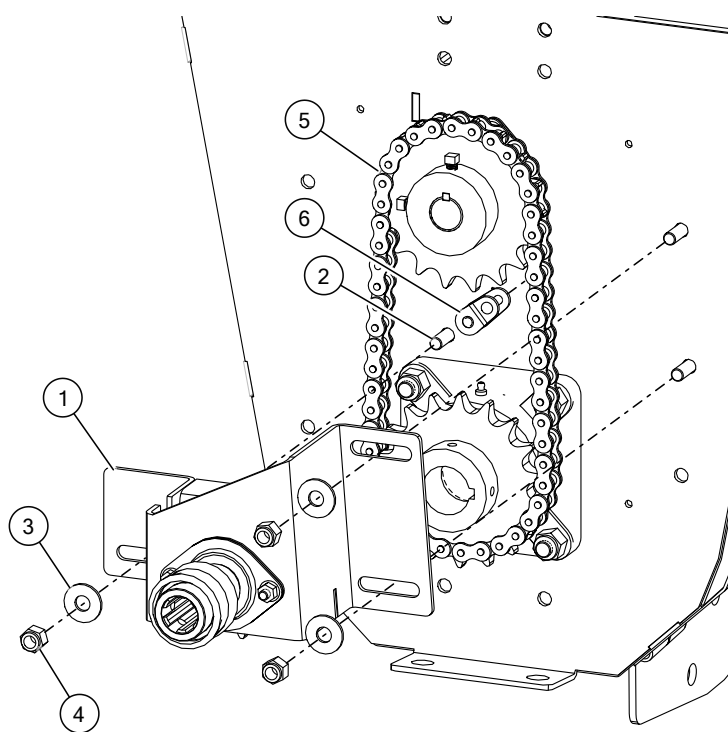
**Note**

It may be necessary to loosen the lower bearing and raise the lower sprocket to get proper chain wrap on the reverser sprocket.

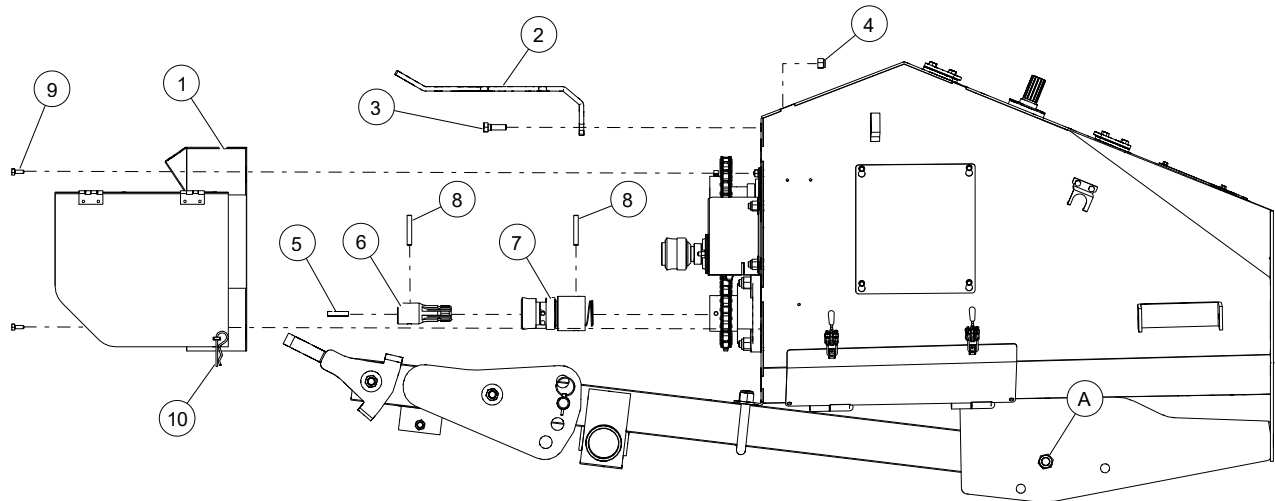
6. Install the splined coupler on the flight shaft using a 3/8" roll pin and the existing square key.

**CAUTION** Protect your eyes when tapping in the roll pin.

7. Install the new reverser shield using the original four 5/16" x 3/4" bolts. Discard the old sprocket shield.
8. **For MKX/X/HX 13 Models only.** Attach the new (longer) PTO bracket to front of boot face with two 1/2" x 1-1/2" bolts and locknuts. If equipped, remove the double hose holder from the existing PTO bracket and attach it to the longer PTO bracket.
9. Adjust the boot tow bar to use the appropriate hole (labeled "Reverser Hole" in a following image), and attach using the existing 3/4" x 5-1/2" bolt and locknut. Tighten securely.
10. Install the splined stub shaft on the PTO driveline using a 3/8" x 1-3/4" square key and 3/8" roll pin. Use a thread locking compound on setscrews to install and tighten them securely.
11. Secure the reverser shield cover using a hair pin.



1	Reverser Base Assembly
2	Bolt, 1/2" x 1-1/4"
3	Flat Washer, 1/2"
4	Locknut, 1/2"
5	Roller Chain
6	Half Link (Heavy), #80HR



1	Reverser Shield	7	Splined Coupler
2	PTO Bracket (MKX/X/HX 13 Models only)	8	Roll Pin, 3/8" x 2-1/2"
3	Bolt, 1/2" x 1-1/2" (MKX/X/HX 13 Models only)	9	Bolt, 5/16" x 3/4"
4	Locknut, 1/2" (MKX/X/HX 13 Models only)	10	Hair Pin
5	Square Key, 3/8" x 1-3/4"	A	Reverser Hole
6	Splined Stub Shaft		

AGI is a leading provider of equipment solutions for agriculture bulk commodities including seed, fertilizer, grain, and feed systems with a growing platform in providing equipment and solutions for food processing facilities. AGI has manufacturing facilities in Canada, the United States, the United Kingdom, Brazil, South Africa, India and Italy and distributes its products globally.



P.O. Box 39, Rosenort, Manitoba, R0G 1W0 Canada  
 P 866.467.7207 (Canada & USA) or 204.746.2396 | F 866.768.4852 | E sales@grainaugers.com

AGGROWTH.COM aggrowthintl   
 ©Ag Growth International Inc. 2023 | Printed in Canada