



A451/A452/A453/A454/A455

Manual Belt Engage Installation Instructions

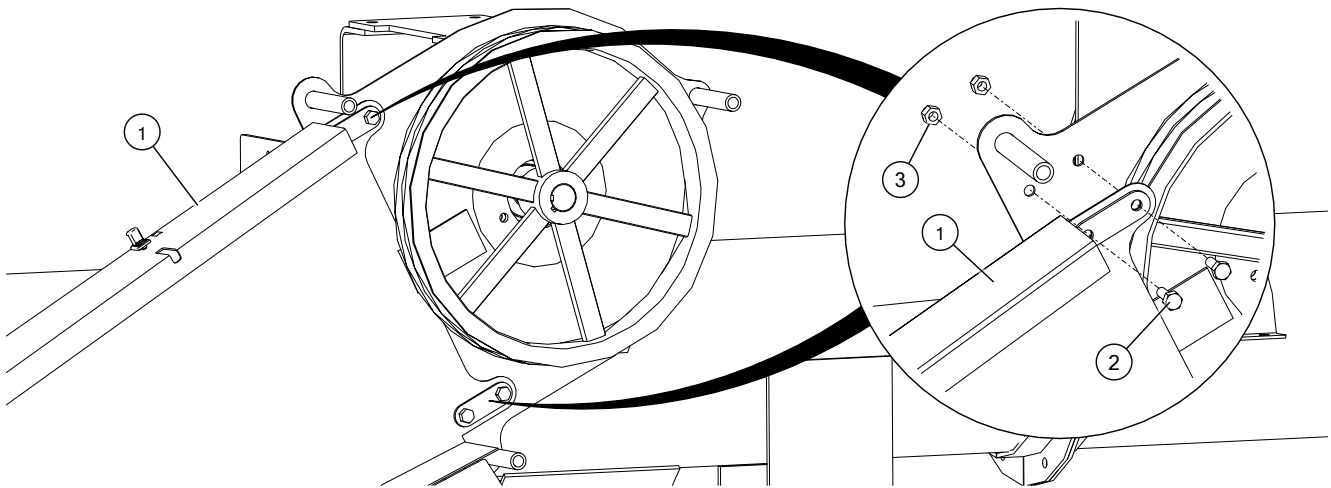
This manual applies to:

AGI Westfield STX2 8/10 (36/41/46/51)

AGI XTA 8/10 (36/41/46/51)

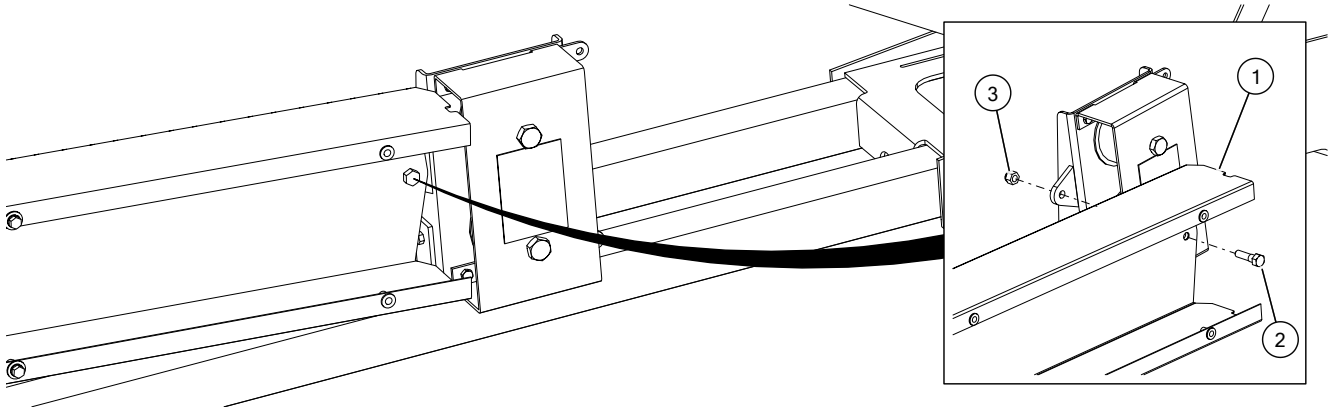
Install the Guard Assembly

31' Augers



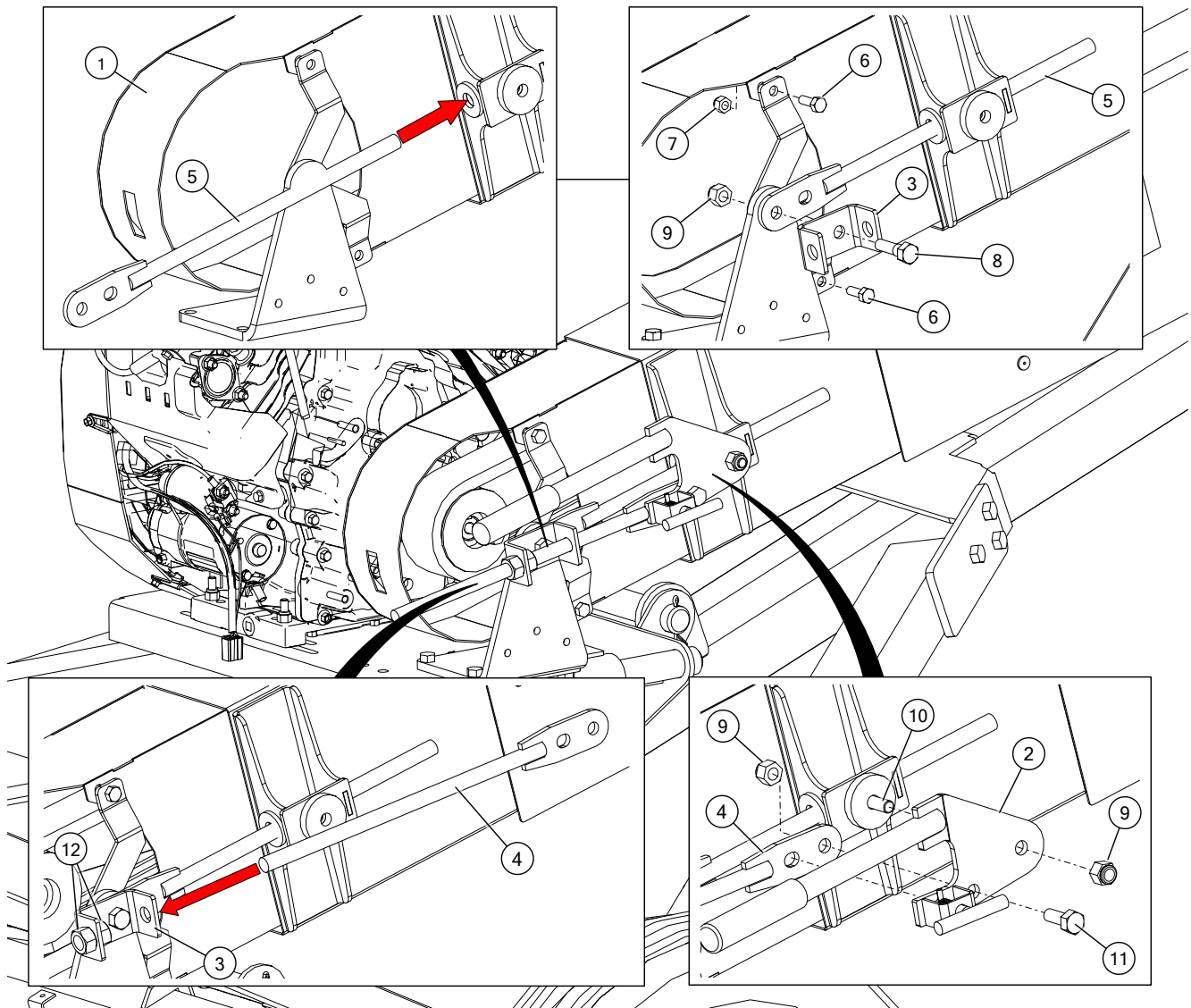
1	guard assembly	3	nylon lock nut, M10
2	hex bolt, M10 x 30L		

36'/41'/46'/51' Augers



1	bottom guard assembly	3	nylon lock nut, M14
2	hex bolt, M14 x 45L		

Install the Engine Pulley Guard

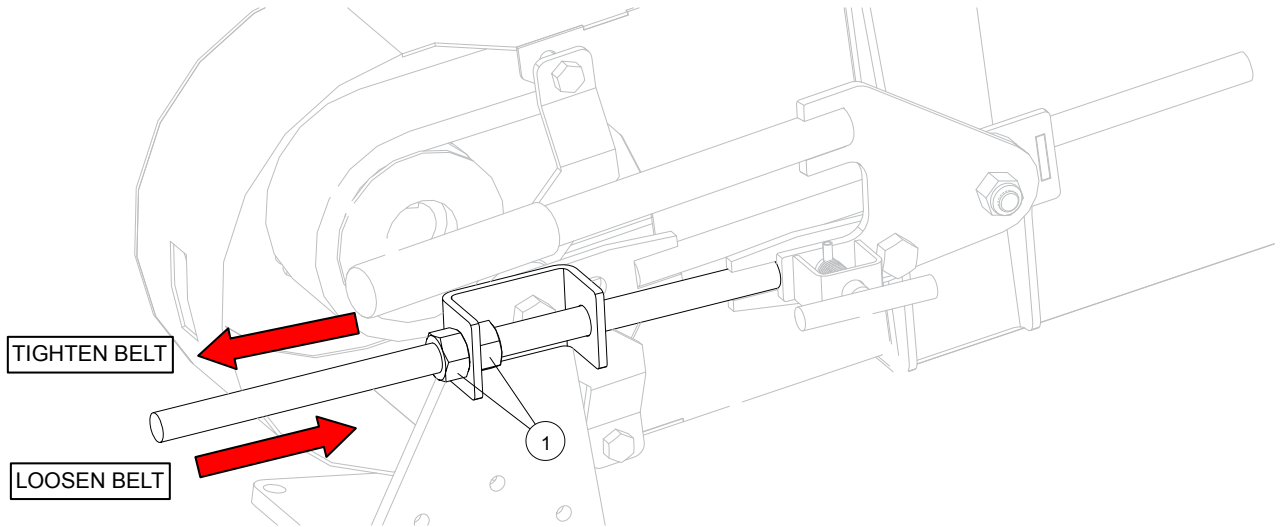


Assembly Note:

- Slip guard over the engine pulley and slide into the guard assembly.

1	guard	7	nylon lock nut, M10
2	manual belt engage handle assembly	8	hex bolt, M14 x 45
3	manual belt engage mount bracket	9	nylon lock nut, M14
4	manual belt engage threaded rod	10	hex bolt, M14 x 50
5	manual belt engage guide rod	11	hex bolt, M14 x 35
6	hex bolt, M10 x 25	12	hex nut, M16

Tension the Belt



Assembly Note:

- Use the two hex nuts to apply tension to the drive belt prior to closing the guard cover.
- Close the guard using the rubber draw latches after the belt has been tensioned.

1	hex nut, M16
---	--------------

Milltec is an AGI Brand.

AGI is a leading provider of equipment solutions for agriculture bulk commodities including seed, fertilizer, grain, and feed systems with a growing platform in providing equipment and solutions for food processing facilities. AGI has manufacturing facilities in Canada, the United States, the United Kingdom, Brazil, South Africa, India and Italy and distributes its products globally.

AGI MILLTEC

51-A, 1st Phase, KIADB Industrial Area, Bommasandra Bangalore-560099, India
 P +91.80.27831128 | F +91.80.27831129 | E milltec@milltecmachinery.com

AGGROWTH.COM aggrowthintl
 ©Ag Growth International Inc. 2025 | Printed in India