



# A549/A550/A551/A552 Swing Mover Electric and Hydraulic Portable Grain Auger Installation Instructions

This manual applies to:

AGI Westfield MKX<sup>2</sup>, X<sup>2</sup> 10/13 Series

AGI X<sup>2</sup> 10/13 Series

AGI Hutchinson HX<sup>2</sup> 10/13 Series

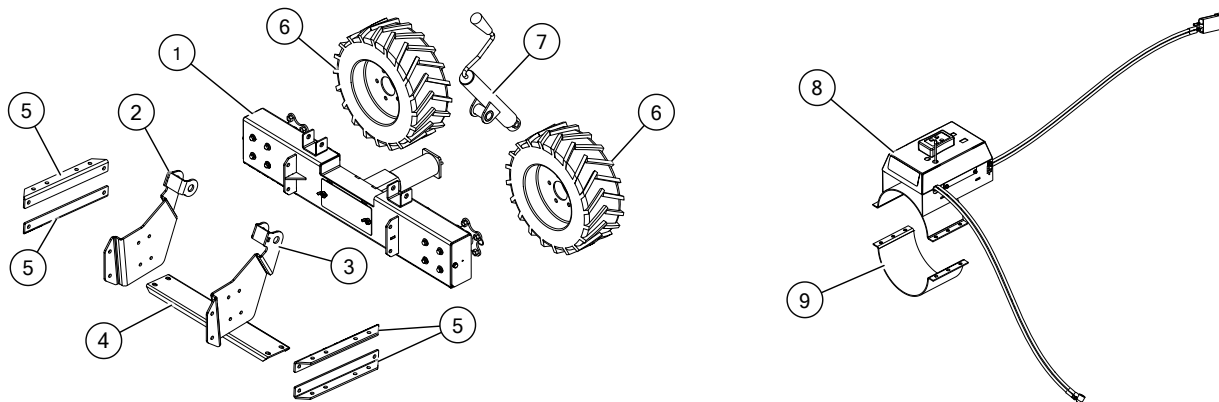
AGI Mayrath HX<sup>2</sup> 10/13 Series



Read and understand the safety information in the Portable Grain Auger manuals before proceeding. Read and understand the instructions in this manual before installing the Swing Mover. Fully disengage and lock out the Portable Grain Auger before installing.

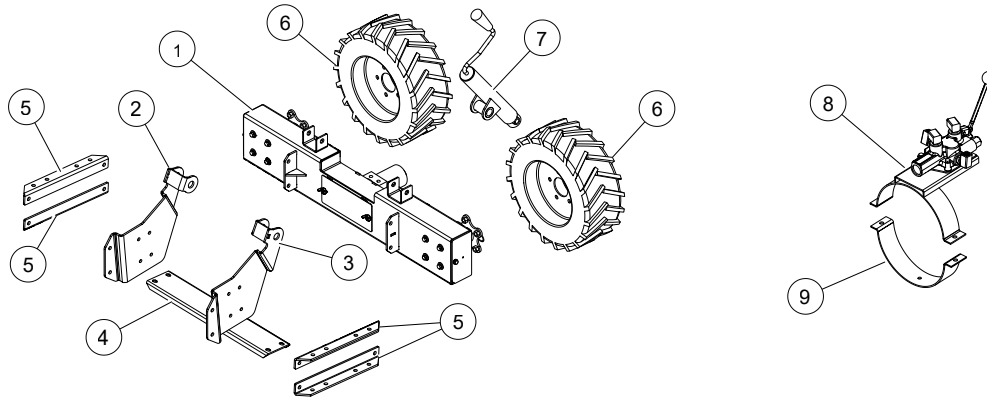
## Power Swing Components

### Electric Swing Mover Components



1	electric swing mover assembly	6	swing mover wheels
2	right-side bracket	7	manual jack
3	left-side bracket	8	transmitter
4	mount	9	hitch ring half clamp
5	bracket		

## Hydraulic Swing Mover Components



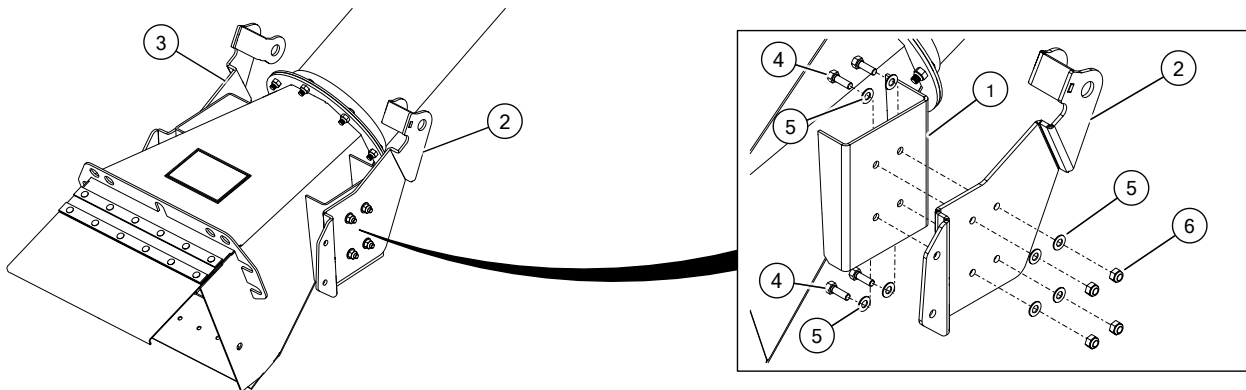
1	hydraulic swing mover assembly	6	swing mover wheels
2	right-side bracket	7	manual jack
3	left-side bracket	8	valve assembly
4	mount	9	half ring clamp
5	bracket		

## Tools Required

- 1/2" drive impact wrench (recommended)
- 1/2", 5/8", and 3/4" sockets, for 1/2" drive
- 1/2", 5/8", 3/4", 15/16" flat wrenches

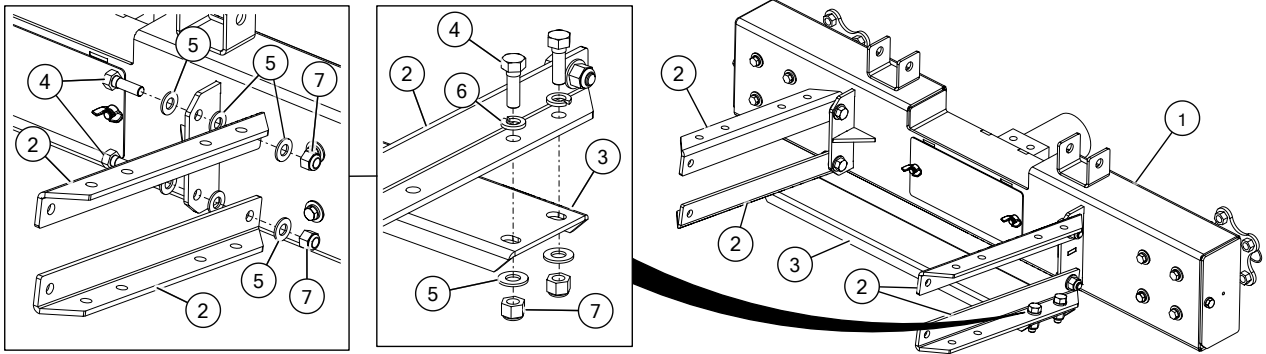
## Install the Mover Base

1. Fasten the right hand and left hand mount weldments to the transition bracket using eight 7/16" x 1-1/4" bolts and lock nuts, and sixteen flat washers.



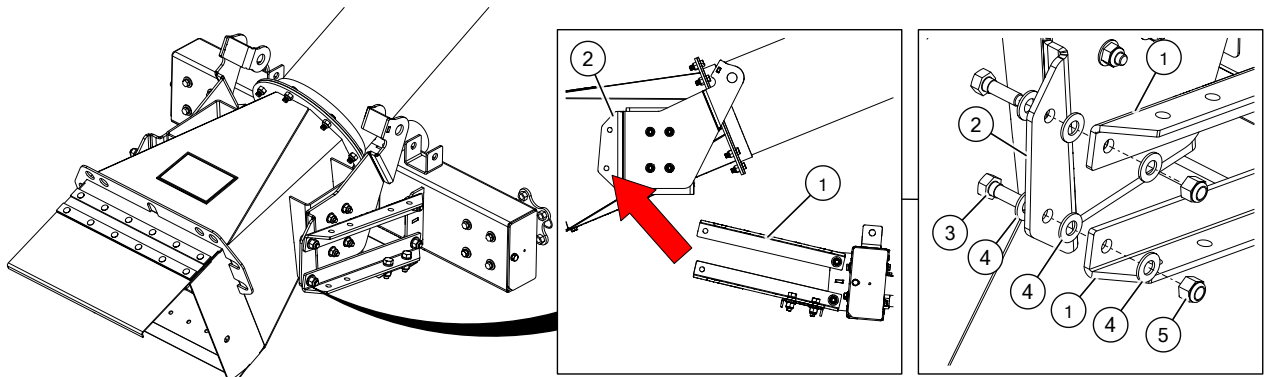
1	transition bracket	4	bolt, 7/16" x 1-1/4"
2	left-hand mount weldment	5	flat washer, 7/16"
3	right-hand mount weldment	6	lock nut, 7/16"

2. Loosely fasten the four regular mount arms to the mover base using 1/2" x 1-1/2" bolts, flat washers and lock nuts.
3. Loosely fasten the middle mount bar to the lower set of regular mount arms using 1/2" x 1-1/2" bolts, flat washers, lock washers and lock nuts.



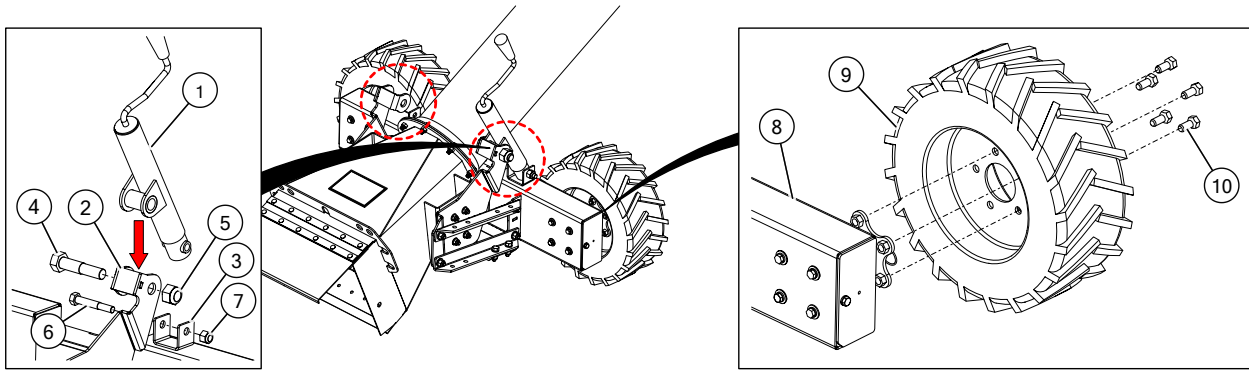
1	mover base	5	flat washer, 1/2"
2	regular mount arm	6	lock washer, 1/2"
3	middle mount bar	7	lock nut, 1/2"
4	bolt, 1/2" x 1-1/2"		

4. Connect the mover base assembly by attaching the four regular mount arms to the right hand and left hand mounts using 1/2" x 1-1/2" bolts, flat washers, and lock nuts.
  - a. Fully tighten hardware attaching middle mount bar to the regular mount arms.
  - b. Tighten hardware further attaching the regular mount arms to the left hand and right hand mounts and mover base, but ensure they are loose enough so they still can pivot.



1	regular mount arm	4	flat washer, 1/2"
2	left-hand mount weldment	5	lock nut, 1/2"
3	bolt, 1/2" x 1-1/2"		

5. Align the bottom manual jack attachment with the 5/8" hole in the mover base attachment point, and secure using a 5/8" x 4" bolt and 5/8" lock nut. Attach the center mount jack attachment with the hole in the left or right hand attachment point and secure with a 1" x 4-1/2" bolt and lock nut.
6. Bolt both wheels to the landing gear power swing assembly using five wheel bolts per wheel. Tighten bolts securely.



**Assembly Note:**

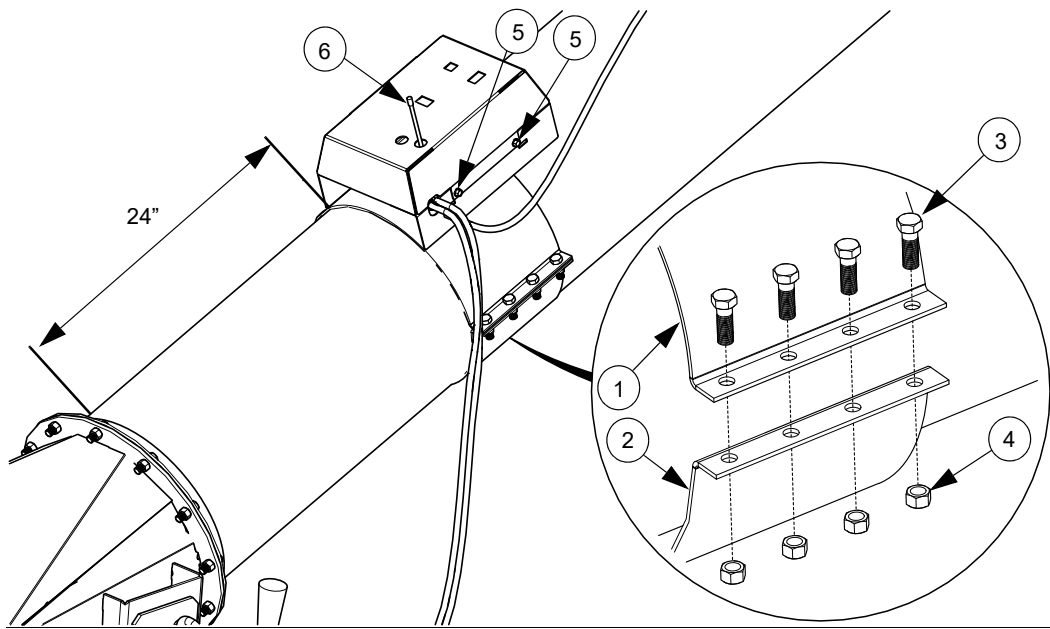
- The jack can be installed on either side of the transition.

1	manual jack	6	bolt, 5/8" x 4"
2	center mount jack attachment	7	lock nut, 5/8"
3	mover base attachment	8	mover base
4	bolt, 1" x 4-1/2"	9	wheel (tire on rims)
5	lock nut, 1"	10	wheel bolts

## Electric Drive Option

### Install and Connect the Receiver Box

1. Position the receiver top clamp assembly approximately 24" from the transition attach plate and secure using eight 7/16" x 1-1/4" bolts and lock nuts. Tighten both sides securely.
2. Remove cover from the receiver box and top clamp assembly. This means removing the four sheet metal screws located on the sides of the cover.
3. Remove radio antenna and transmitter from the crate (it will be in a separate bag). Screw antenna into the socket on the clamp-base.
4. Replace cover, making sure that the antenna fits through the top hole. Replace sheet metal screws, and tighten securely.

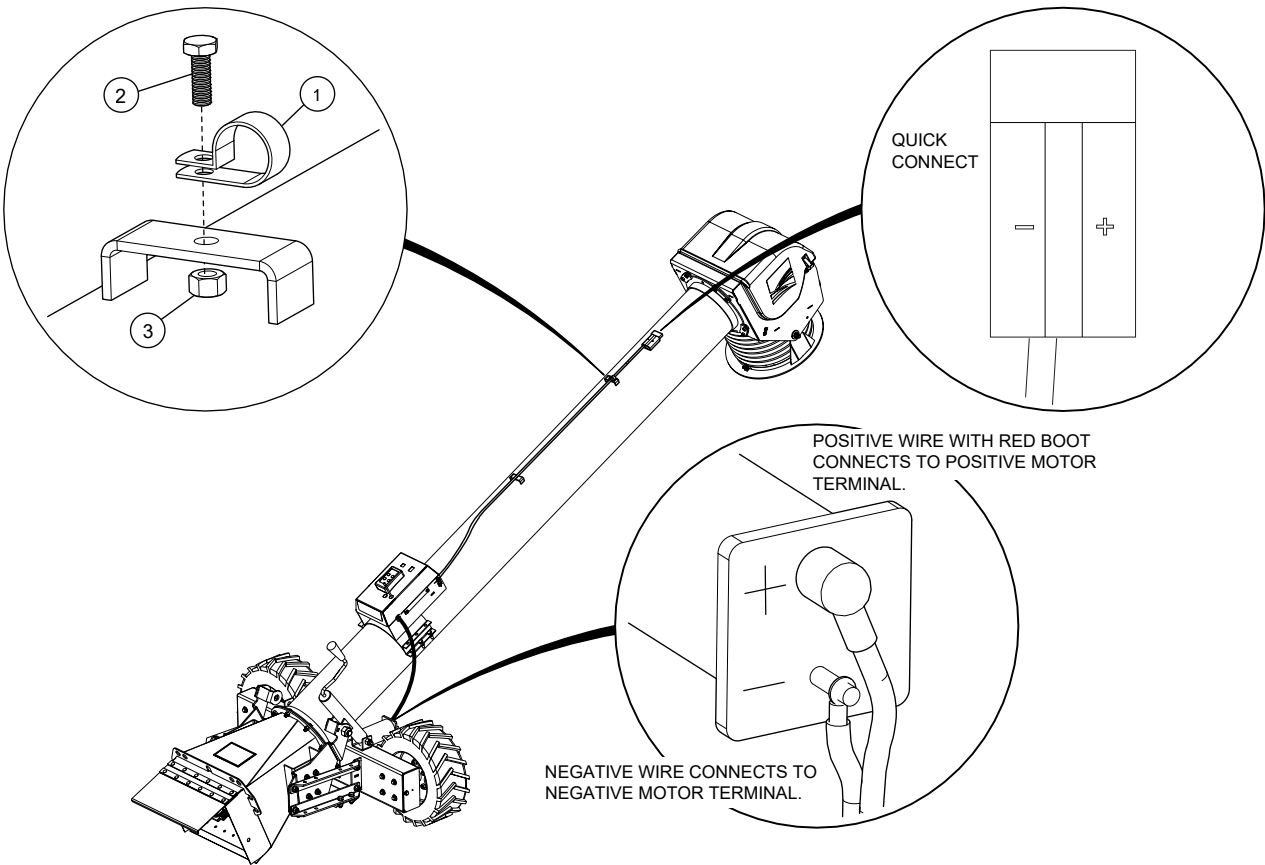


1	receiver top clamp assembly	4	lock nut, 7/16"
2	hitch ring half clamp	5	sheet metal screw, #14 x 5/8"
3	bolt, 7/16" x 1-1/4"	6	antenna

5. The electrical cables are pre-installed to the receiver box. Uncoil the shorter (4') electrical cable and identify the positive and negative wires. The positive wire has a red boot and printing on it.
  6. Attach the wires to the motor terminals on the Power Swing. The positive wire with the red boot connects to the positive (+) terminal on the electric motor. To connect:
    - a. Unscrew the nut on the motor terminal.
    - b. Place the wire on, and then replace the nut.
    - c. Tighten securely.
    - d. Repeat the same steps for the negative wire and terminal.
  7. Route the long electrical cable up the swing tube and secure it using an insulated clamp, a 1/4" x 3/4" bolt, and a 1/4" lock nut.
  8. Uncoil the tractor wire harness.
  9. Connect the end opposite the quick-connect to the battery and chassis ground using the 5/16" lugged connectors supplied with the kit:
    - a. Attach the positive wire directly to the positive terminal on the tractor battery (the positive wire has a circuit breaker on it).
    - b. Attach the negative wire to a tractor chassis ground point (assuming that the tractor battery is also grounded to the chassis).
- NOTICE** If these electrical cables are not hooked up properly the electric controller will be damaged.
10. Attach the receiver cable quick connect to the tractor wire harness quick connect.

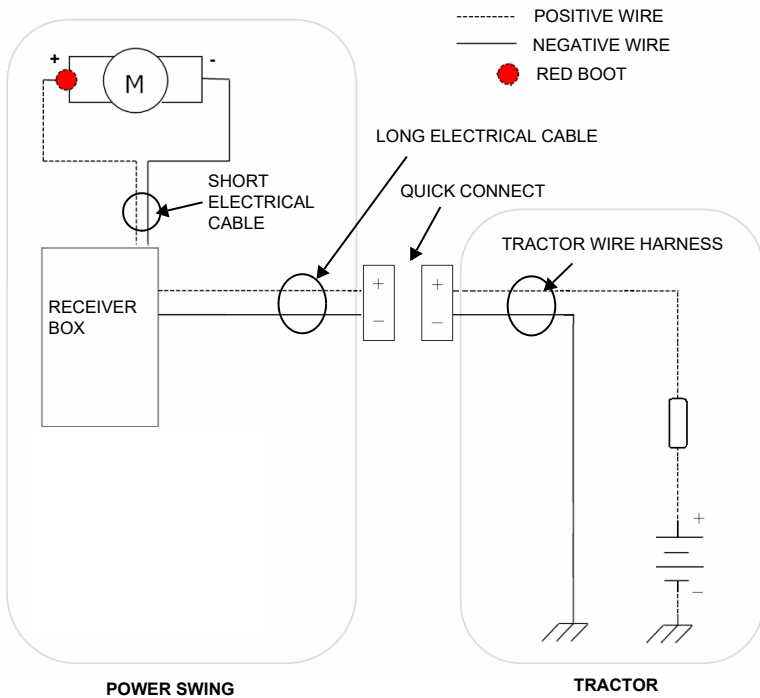
**Note**

Ensure that both tires are turning in the same direction. If they are not, reverse the wires on one of the motors.



1	insulated clamp, 5/8" x 1/2"	3	lock nut, 1/4"
2	bolt, 1/4" x 3/4"		

Figure 1. Power Swing Wiring Diagram



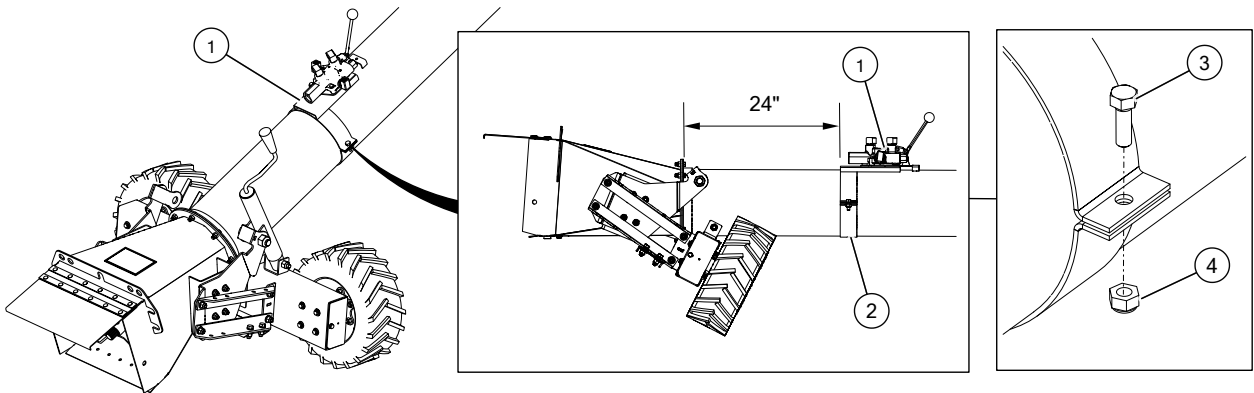
# Hydraulic Drive Option

## Install and Connect the Single-Spool Valve

### Note

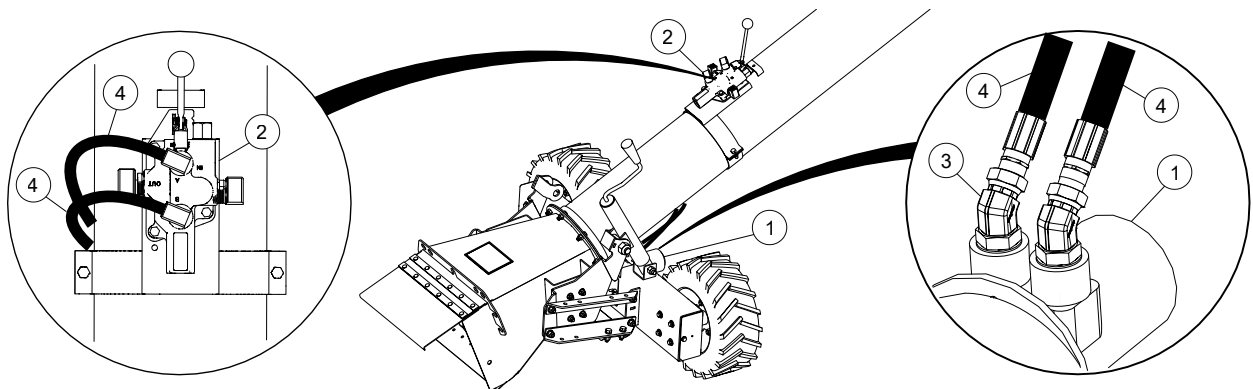
The Single-Spool hydraulic control valve can be converted between closed center and open center. See Operator’s manual. To determine whether your hydraulic system is an open system or a closed system, check your tractor manual.

1. Position the single-spool valve assembly at approximately 24" from the transition attach plate. Secure using two 7/16" x 1-1/4" bolts and lock nuts.



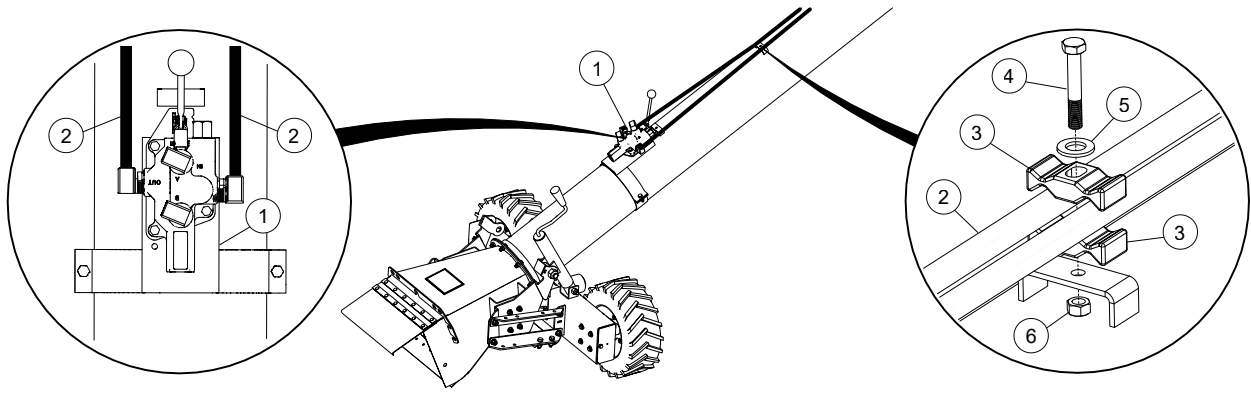
1	single-spool valve assembly	3	bolt, 7/16" x 1-1/4"
2	half clamp	4	lock nut, 7/16"

2. Install two 45° fittings into the swing hydraulic motor ports. Connect the shorter hydraulic hoses from the single-spool valve to the swing hydraulic motor.



1	swing hydraulic motor	3	45° fitting
2	single-spool valve assembly	4	hydraulic hose

3. Connect the hydraulic supply and return hoses to the single-spool valve and run the hoses up the swing tube to the tractor. Secure hoses to the swing tube using two line blocks, a 5/16" x 2-1/2" bolt, flat washer, and lock nut.



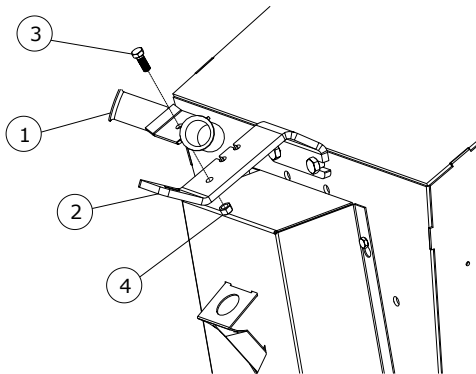
1	single-spool valve assembly	4	bolt, 5/16" x 2-1/2"
2	hydraulic hose	5	flat washer, 5/16"
3	line block	6	lock nut, 5/16"

4. Install 1/2" pioneer couplers onto the other end of the hydraulic supply and return hoses.

### Install the Double Hose Holder

This section does not apply to MKX<sup>2</sup> 13, X<sup>2</sup> 13, and HX<sup>2</sup> 13 models.

1. Attach the double hose holder to the PTO bracket with a 3/8" x 1" bolt and lock nut.



1	double hose holder
2	PTO bracket
3	bolt, 3/8" x 1"
4	lock nut, 3/8"

AGI is a leading provider of equipment solutions for agriculture bulk commodities including seed, fertilizer, grain, and feed systems with a growing platform in providing equipment and solutions for food processing facilities. AGI has manufacturing facilities in Canada, the United States, the United Kingdom, Brazil, South Africa, India and Italy and distributes its products globally.

