



A524

Standard Hopper

Portable Grain Auger

Installation Instructions

This manual applies to:

AGI Westfield MKX² 10 Series

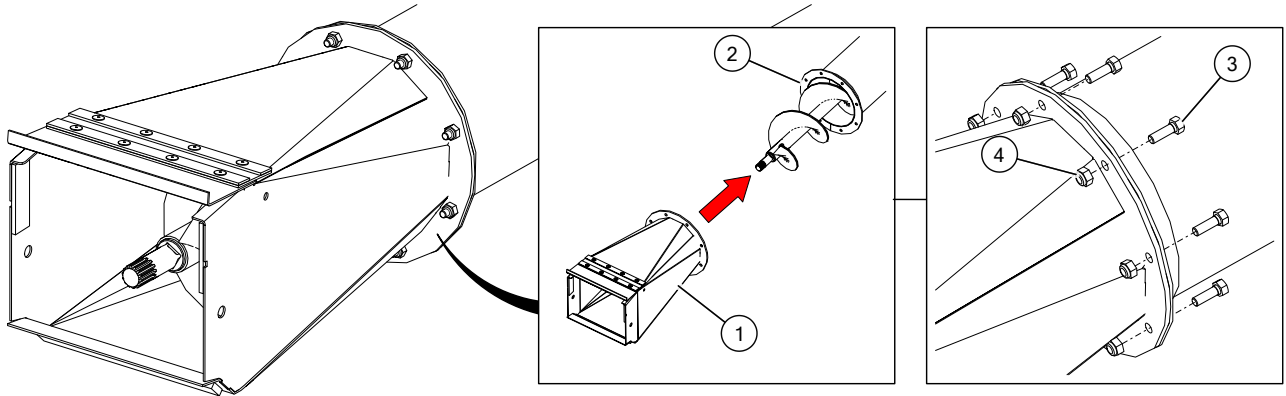
Pre-Installation Instructions

1. Park the auger on level ground. Fully lower the auger.
2. Relieve pressure in the hydraulic hose(s) and disconnect them from the auger.
3. Chock the auger wheels to prevent rolling.
4. Lower the swing hopper fully to the ground.
5. Use the jack to support the boot, then disconnect the tractor from the auger (PTO shaft and hitch).
6. If present, remove the existing hopper and transition.

Installing the Transition

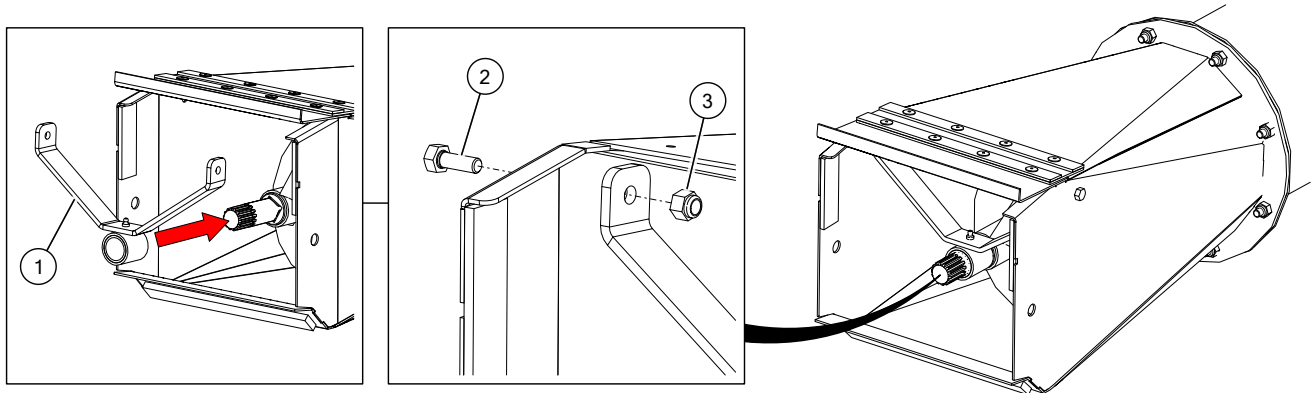
This section is only required for augers with an existing hopper.

Attach the Transition Assembly to the Swing Tube



1	transition assembly	3	hex bolt, M12 x 30
2	swing tube	4	nylock nut, M12

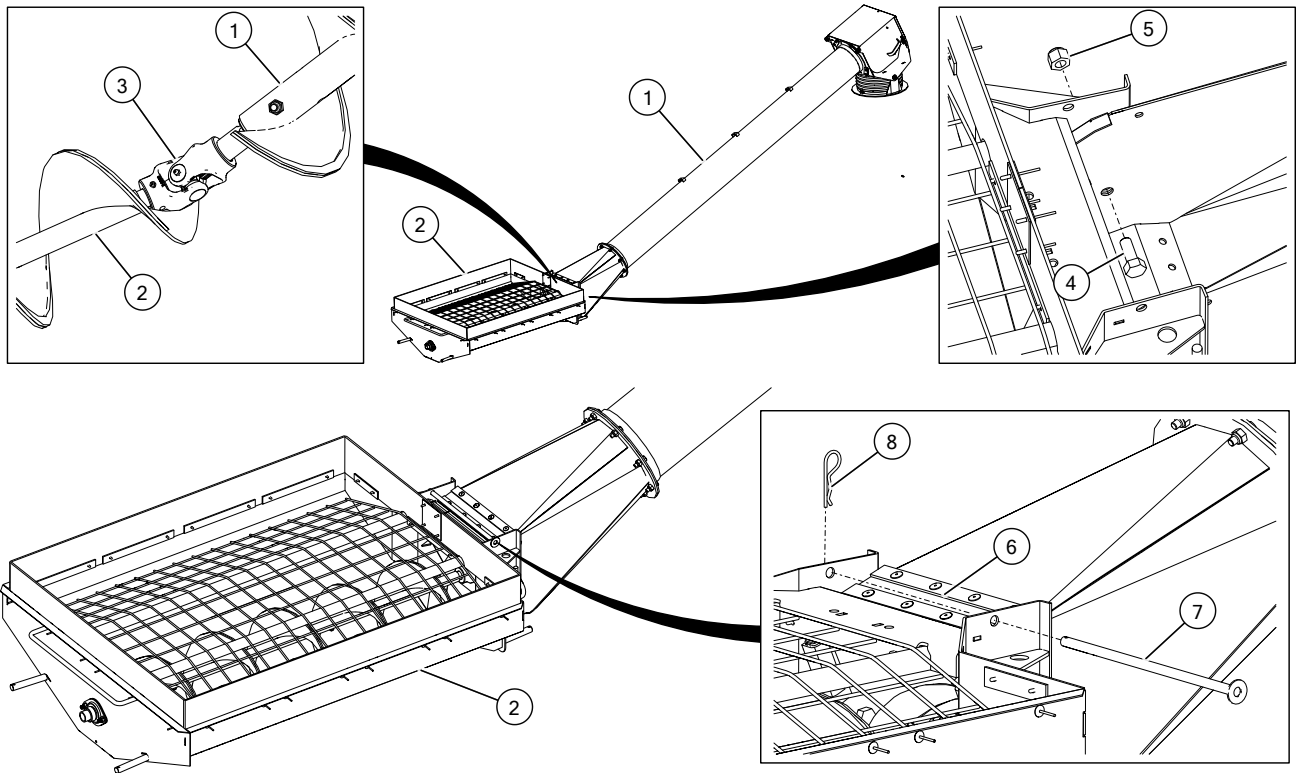
Install the Transition Bearing Mount



1	transition bearing mount	3	nylock nut, M10
2	hex bolt, M10 x 25		

Installing the Standard Hopper

Attach the Flighting and Hopper

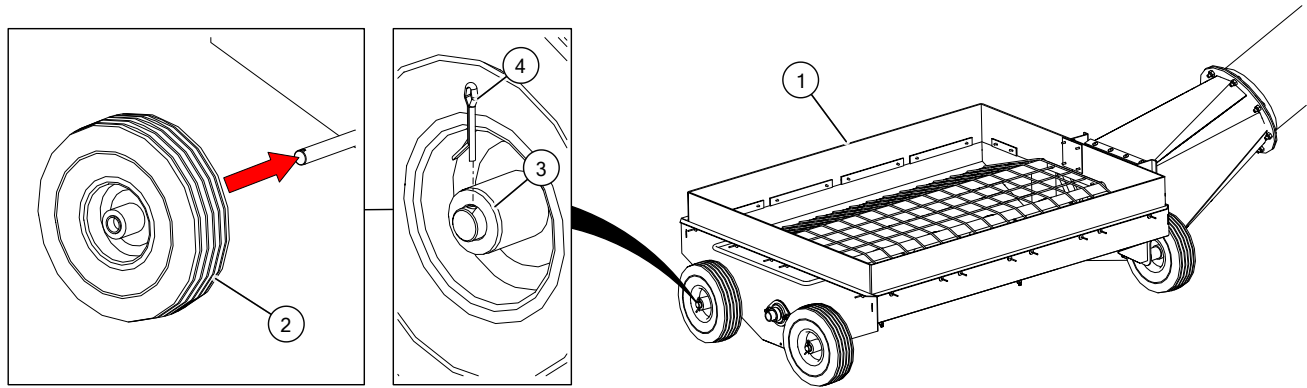


Assembly Notes:

- Clean dirt and paint from inside the u-joint and flight shaft end, then grease the shaft end.
- Raise and support the hopper tube spout head on a stand about 50" (127 cm) high.
- Open the service door on the transition for easier access.
- Do not overtighten; tighten to a slightly loose fit only as these bolts act as pivot points.
- Tighten set screws on u-joints, then close and secure the service door.

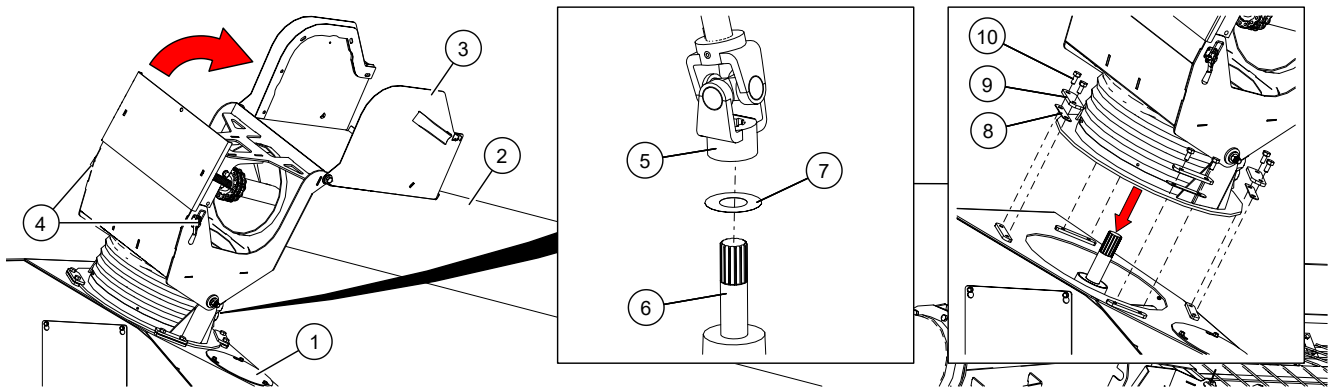
1	swing tube assembly	5	nylock nut, M16
2	hopper assembly	6	service door
3	u-joint	7	door pin
4	hex head bolt, M16 x 40	8	hairpin

Install the Wheels



1	hopper assembly	3	rim washer
2	wheel	4	cotter pin

Attach the Swing to the Boot



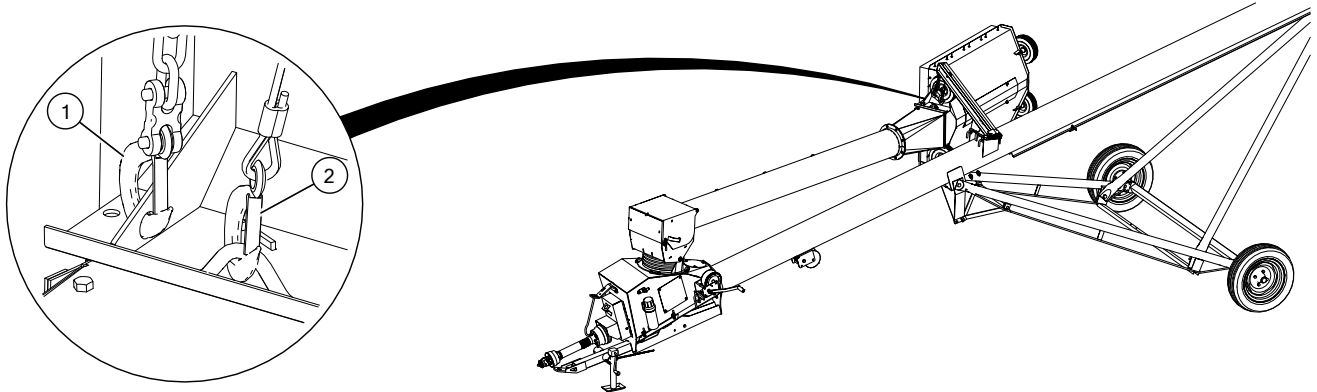
Assembly Notes:

- Open the latches and rotate the spout lid.
- Clean the u-joint spline and splined shaft on the lower gearbox, then apply a light film of grease on the splined shaft.
- Center the spout head above the gearbox, then guide the u-joint onto the gearbox shaft.
- The gearbox has been filled at the factory (half full) with EP90 gear oil. Before further assembly, check oil level to make certain the gearbox is half full as required. Add oil if necessary. Do not use grease.
- Lubricate the u-joint, then close and secure the spout head lid.

1	boot	6	lower gearbox shaft
2	swing tube	7	rim washer
3	spout head lid	8	spout head spacer
4	latch	9	spout head retainer
5	upper gearbox u-joint	10	hex bolt, M10 x 20

Hopper Transport Position

36' Models

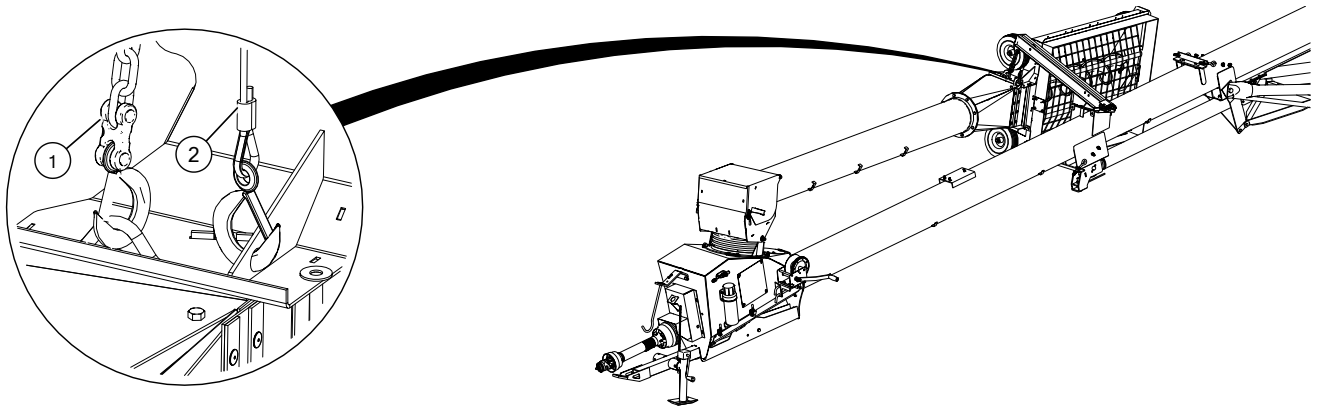


Assembly Note:

- The feed side of the hopper must face away from the main auger when in transport.

1	safety chain	2	winch cable
---	--------------	---	-------------

53'/63'/73'/83' Models



Assembly Note:

- The feed side of the hopper must face the main auger when in transport.

1	safety chain	2	winch cable
---	--------------	---	-------------

Maintenance of Standard Hopper

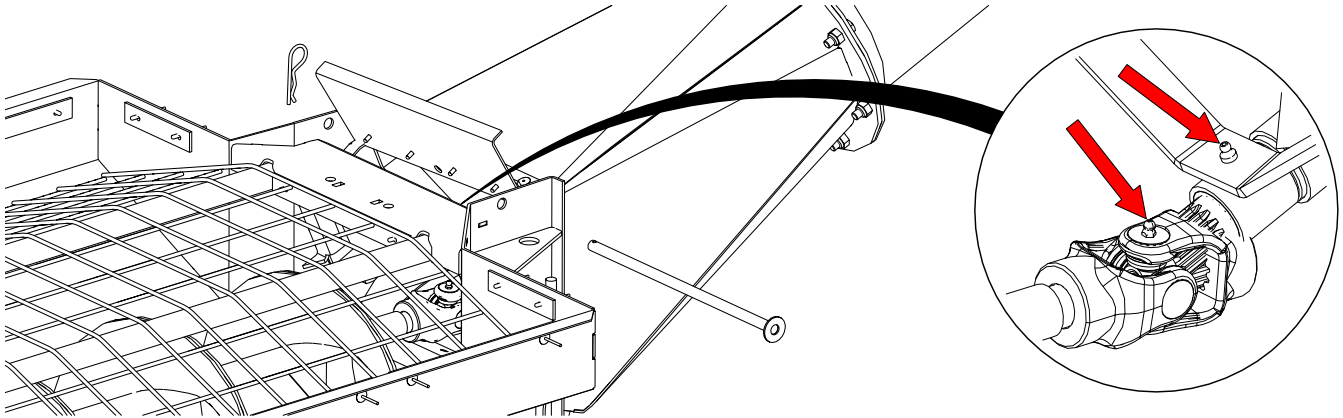
Before performing maintenance, shut off tractor and remove the key. Disconnect PTO driveline from tractor.

Frequent

Open the access door — then grease the bushing and u-joint. Close the access door, then slide in the door pin and secure with the hairpin.

Note

For all other instructions, see Operator's Manual.




Milltec is an AGI Brand.

AGI is a leading provider of equipment solutions for agriculture bulk commodities including seed, fertilizer, grain, and feed systems with a growing platform in providing equipment and solutions for food processing facilities. AGI has manufacturing facilities in Canada, the United States, the United Kingdom, Brazil, South Africa, India and Italy and distributes its products globally.

AGI MILLTEC

51-A, 1st Phase, KIADB Industrial Area, Bommasandra Bangalore-560099, India
 P +91.80.27831128 | F +91.80.27831129 | E milltec@milltecmachinery.com

AGGROWTH.COM aggrowthintl 
 ©Ag Growth International Inc. 2025 | Printed in India