



# A292 Reverser Kit Portable Grain Auger Installation Instructions

This manual applies to:

AGI Westfield MKX<sup>2</sup>, X<sup>2</sup> 10 Series

AGI X<sup>2</sup> 10 Series

## Pre-Installation Instructions

1. Lower the auger to full down position, and disconnect the tractor from the auger (PTO shaft, hydraulic lines, and hitch).
2. Chock the auger wheels to prevent rolling.
3. Lower the swing hopper fully to the ground.
4. Remove the transport saddle and the transport bracket from the boot.
5. Remove the sprocket shield from the boot.
6. Remove the PTO driveline from the auger.
7. Remove the drive chain from the front of the boot.

## Installing the Reverser Kit

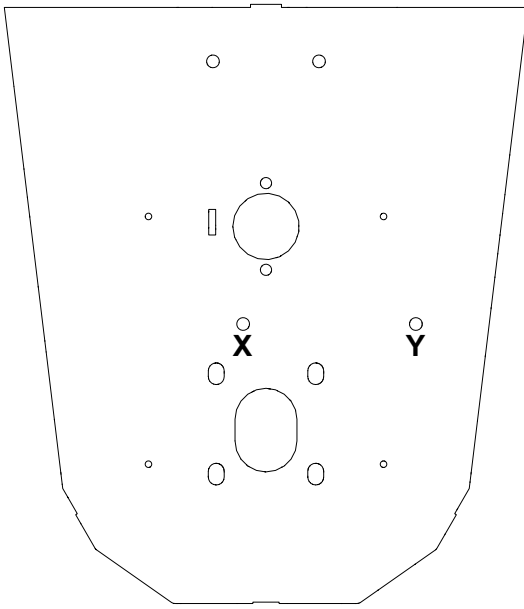
1. Locate mounting holes **X** and **Y** (see [Figure 1](#)). Knock the steel plugs out of these holes using a punch and hammer.

### Note

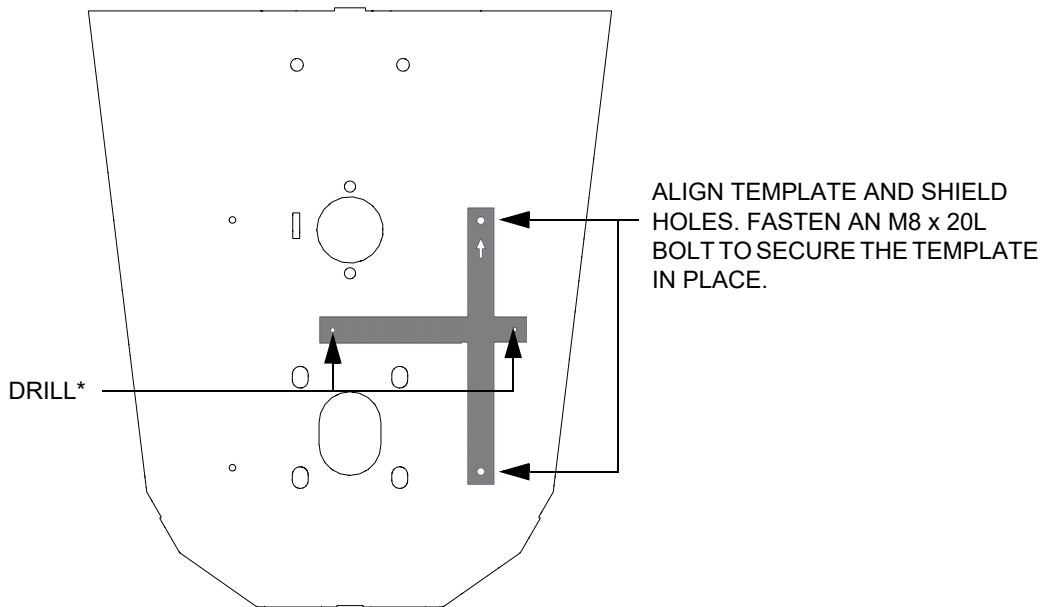
If the boot does not have the required holes for mounting the reverser bracket, drill the holes using the provided template (see [Figure 2](#)) or contact customer service for further assistance.

2. Install the reverser base with two M14 x 30 bolts and lock nuts (see [Figure 3](#)). Do not tighten until Step 5.
3. Install the half-link on roller chain and place chain over upper and lower sprockets, passing it through the reverser base.

**Figure 1. Locating Reverser Bolt Holes**

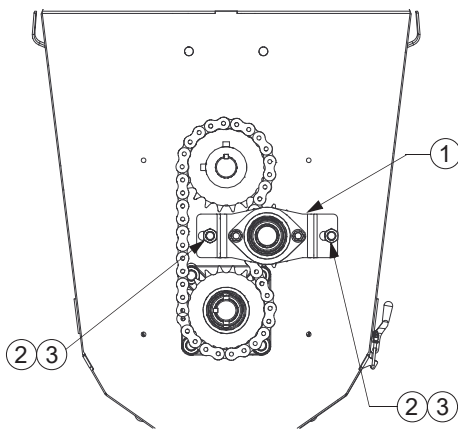


**Figure 2. Drilling Reverser Bolt Holes Using Template**



\* USE 3/16" DRILL BIT TO DRILL PILOT HOLES, THEN REMOVE THE TEMPLATE AND USE 33/64" DRILL BIT.

**Figure 3. Fastening Reverser Base to the Boot**



1	reverser base
2	hex bolt, M14 x 30
3	nylock nut, M14

4. Join the two ends of the chain together using the half link and the connector link.
5. Push the reverser base against the chain as tight as possible and tighten the two M14 x 30 hex bolts.

**Note**

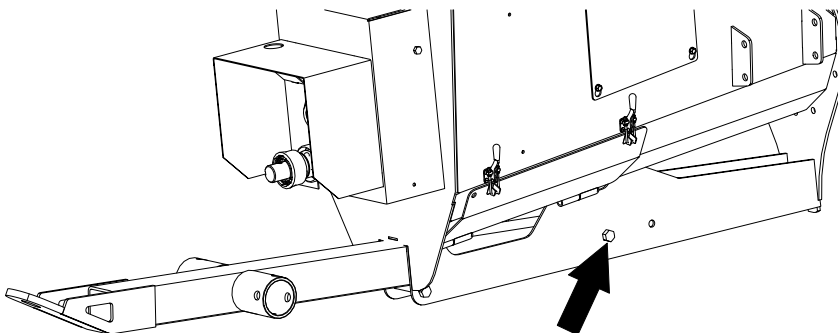
It maybe necessary to loosen the lower bearing and raise the lower sprocket to get proper chain wrap on the reverser sprocket.

6. Install the lower coupler on the flight shaft using a 1/4" x 3-1/8" square key and secure using a 5/16" x 2" roll pin (see [Figure 5](#)).
7. Facing the front of the boot, install the shield bracket onto the upper right boot mounting hole using one original M8 x 20 bolt.

**CAUTION** Protect your eyes when tapping in the roll pin.

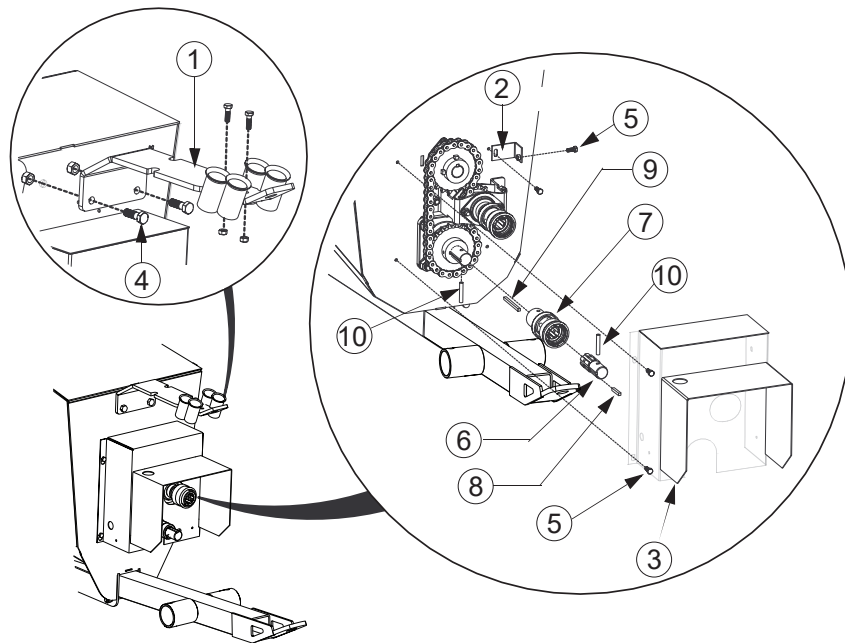
8. Attach the new (longer) PTO bracket to front of boot face with the original M14 x 35 bolts and lock nuts.
9. **For augers with a welded hitch:** Fasten hitch extension to tow bar with one M20 x 60 bolt, flat washer, and lock nut, and one M16 x 120 bolt and lock nut.
10. **For augers with a bolt-on hitch:** Adjust the boot tow bar to the appropriate hole, and attach using the existing M14 x 30 bolt and lock nut.

**Figure 4. Bolt-on Hitch Position**



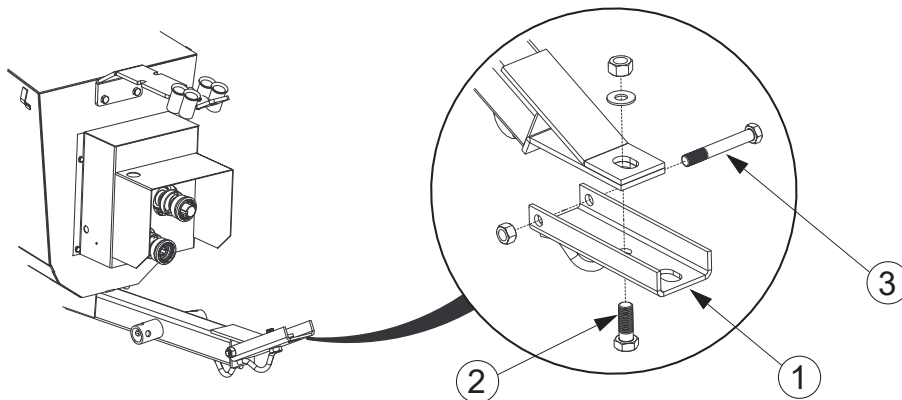
11. Install the splined stub shaft on the PTO driveline using a 1/4" x 1-1/2" square key and 5/16" x 2" roll pin. Use a thread locking compound on setscrews to install and tighten them securely.
12. Install the new reverser shield using the three remaining original M8 x 20 hex bolts. Discard the old sprocket shield.
13. Slide the existing PTO transport saddle through the PTO bracket on the boot and rest the PTO driveline in it.

Figure 5. Reverser Assembly Details (Splined Shaft, Coupler, Shield, and Hardware)



1	PTO bracket
2	shield bracket
3	reverser shield
4	hex bolt, M14 x 35
5	hex bolt, M8 x 20
6	splined shaft
7	lower coupler
8	square key, 1/4" x 1-1/2"
9	square key, 1/4" x 3-1/8"
10	roll pin, 5/16" x 2"

Figure 6. Welded Hitch Extension



1	hitch extension	3	hex bolt, M16 x 120
2	hex bolt, M20 x 60		

Milltec is an AGI Brand.

AGI is a leading provider of equipment solutions for agriculture bulk commodities including seed, fertilizer, grain, and feed systems with a growing platform in providing equipment and solutions for food processing facilities. AGI has manufacturing facilities in Canada, the United States, the United Kingdom, Brazil, South Africa, India and Italy and distributes its products globally.



51-A, 1<sup>st</sup> Phase, KIADB Industrial Area, Bommasandra Bangalore-560099, India  
 P +91.80.27831128 | F +91.80.27831129 | E milltec@milltecmachinery.com

AGGROWTH.COM aggrowthintl   
 ©Ag Growth International Inc. 2025 | Printed in India